

**Acre Lane, London, SW2**

2 bedroom flat - conversion for sale

**£500,000**

Leasehold

## Property Details

A stunning two bedroom apartment with off-street parking in a Grade II Listed Georgian property set back from the street on the up-and-coming Acre Lane, a short walk to Brixton tube. Boasting an abundance of natural light this wonderful home has windows on three sides plus a sky-light. It also features excellent storage space, including a built-in closet, and is on the top floor ensuring peace, privacy, and security. A well-proportioned reception is an inviting spot with space for a dining table and multiple sash windows framing impressive views over the neighbouring rooftops, to be savoured come day or twinkling lights of night. Across the hall sits a contemporary separate kitchen with shaker style units and worktops which wrap around to maximise space. Ideal for sharers, both bedrooms are set to opposing sides of the property for privacy, the principal has built-in storage and looks out for miles over the London skyline. Newly renovated the bathroom is fresh with a walk-in shower and handy storage. There is off-street parking at the front of the building, shared on a first-come first-served basis.

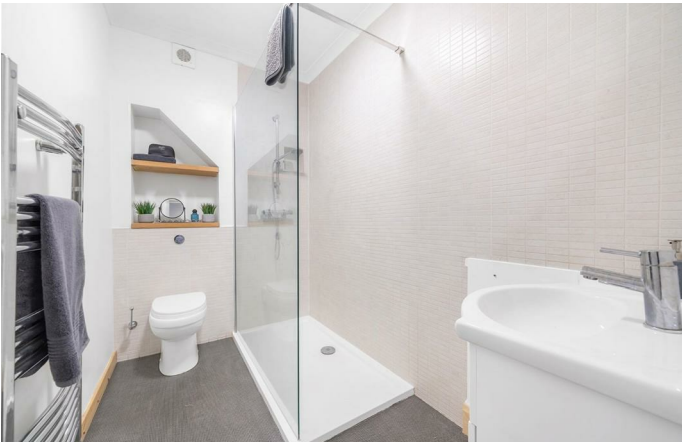
**Council tax band B**

**EPC rating D (58)**

## Features

- Two bedrooms
- Stunning views
- Georgian Grade II listed conversion
- Shared off-street parking
- Bright and airy
- Local amenities of Acre Lane on the doorstep
- Central Brixton a five-minute walk
- Clapham High-street a fifteen-minute stroll
- Victoria and Northern tube lines
- Chain-free. Right to manage

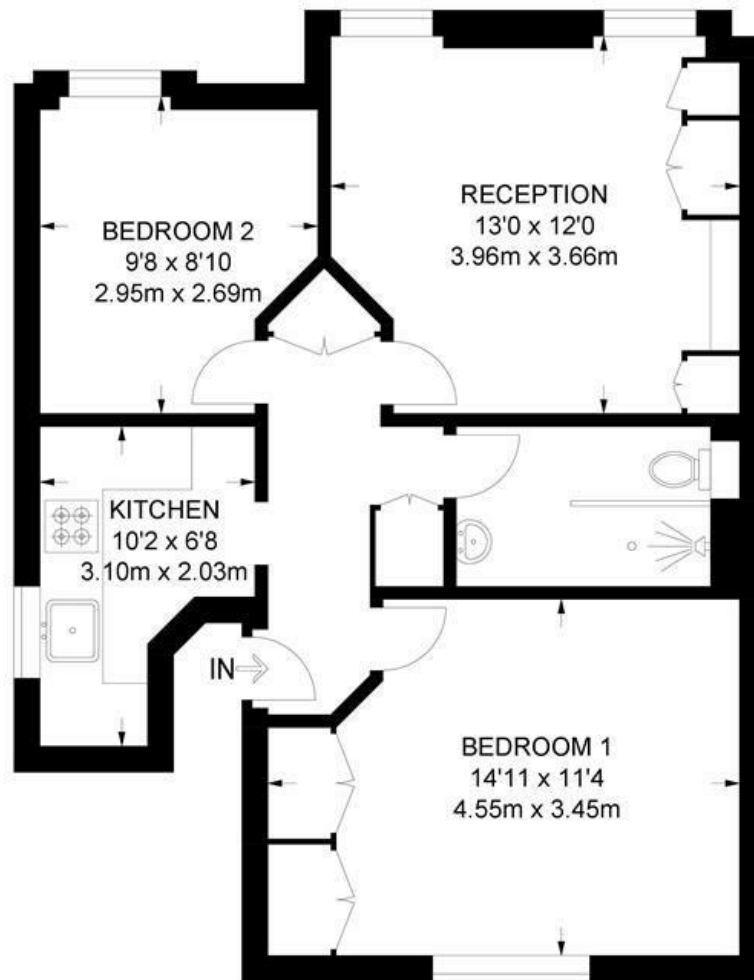




Acre Lane, London, SW2

**Acre Lane, SW2**  
**2 Bedroom Flat**

APPROXIMATE GROSS INTERNAL AREA: **564 SQ FT / 52.4 SQ M**



**SECOND FLOOR**



While we try our very best, floor plans are produced as a guide only and we take no responsibility for the precise accuracy with which any property is represented.



Acre Lane, London, SW2

