

Tulse Hill, Brixton, SW2

1 bedroom flat - purpose built for sale

£420,000

Leasehold

Property Details

An elegant one double bedroom apartment set back from the street with a private terrace boasting views of The Shard and London city Skyline. This impressive new home forms part of a gated development designed with attention to detail. This stylish fourth floor apartment has a bright and airy feel, with additional privacy due to the elevated position. The open-plan reception is a fantastic entertaining space with high ceilings enhancing the cavernous feel. Down lighting and timber floors in warming shades create a welcoming ambience. A sleek kitchen integrates appliances and generous storage, topped with work surfaces with worktop lighting setting an evening mood. A large pane glass door leads out to the large terrace, this low-maintenance spot is sheltered by glass balustrades, with lighting and sockets, ideal for year-round use. The bedroom is a spacious double, with a calming yet airy ambience and picture-frame window. The bathroom has a large shower set against elegant neutral tiling, complemented by a chic vanity unit and an illuminated mirror. The home benefits from video entry phone, high energy efficiency and ten-year build warranty.

Features

- One double bedroom
- Private terrace with city views
- Bright and airy atmosphere throughout
- New, exclusive gated development
- Supermarket, restaurants and cafes on the doorstep
- Central Brixton and Herne Hill both a ten-minute stroll
- Brockwell Park a four-minute walk
- 10 year build warranty
- Chain-free

Council tax band

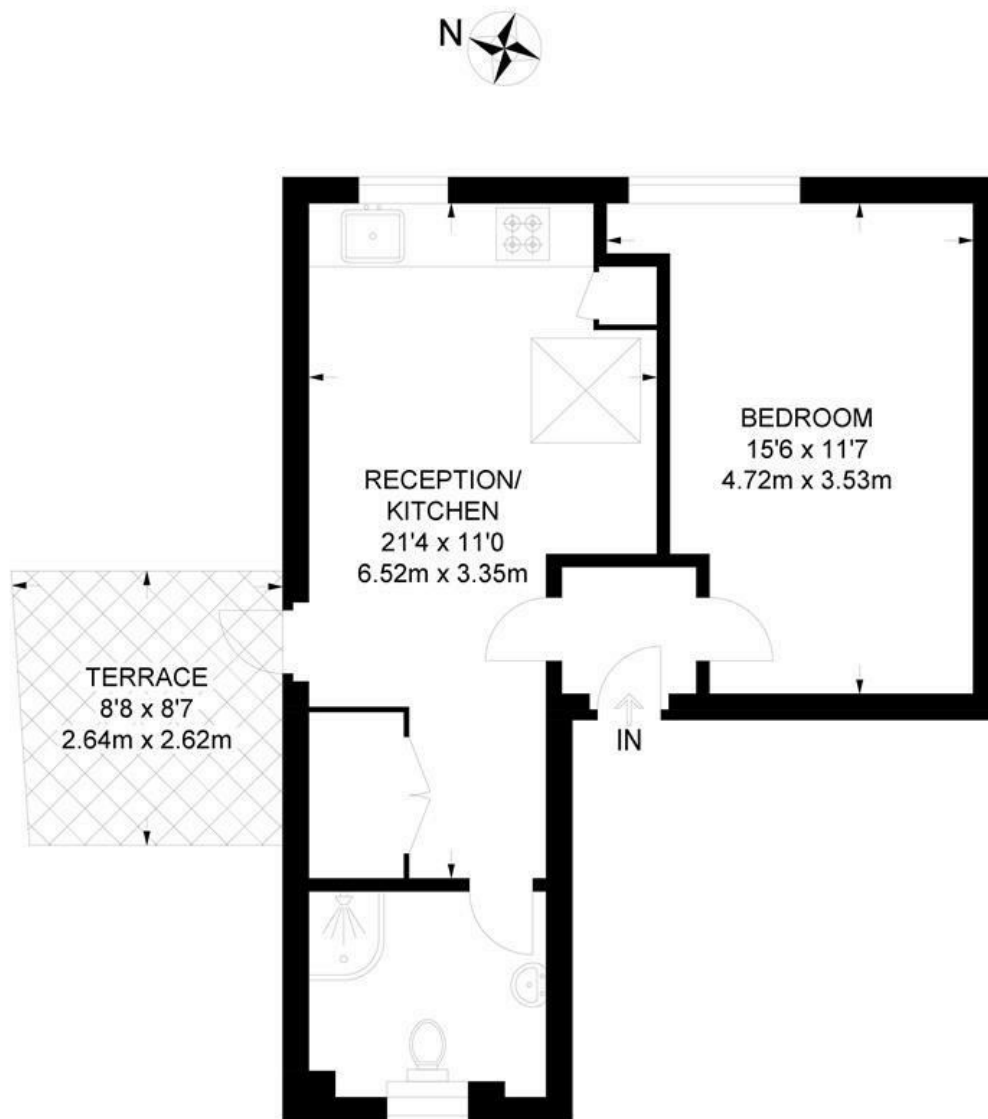
EPC rating C (79)



Tulse Hill, Brixton, SW2

Tulse Hill, SW2
1 Bedroom Flat

APPROXIMATE GROSS INTERNAL AREA: **422 SQ FT / 39.2 SQ M**



FOURTH FLOOR



While we try our very best, floor plans are produced as a guide only and we take no responsibility for the precise accuracy with which any property is represented.

Tulse Hill, Brixton, SW2

