



Mauleverer Road, Brixton, SW2

1 bedroom flat - conversion to let

£370 Per Week

Furnished

Property Details

A generously sized one bedroom garden flat, arranged over the ground floor of an attractive period conversion on a quiet and sleepy street sandwiched between Clapham and Brixton. Mauleverer Road is located in a popular residential pocket of pretty Victorian terraces.

The reception at the front of the property is bright and airy with an attractive atmosphere, adjacent and peacefully located is the comfortable bedroom, perfectly positioned for tranquillity and privacy, overlooking the wide side-return at the back. An attractive, recently refurbished and stylishly tiled bathroom follows on and a contemporary kitchen at the rear completes the flat and provides access to the fantastic private outside space, perfect for enjoying the warmer months and entertaining guests.

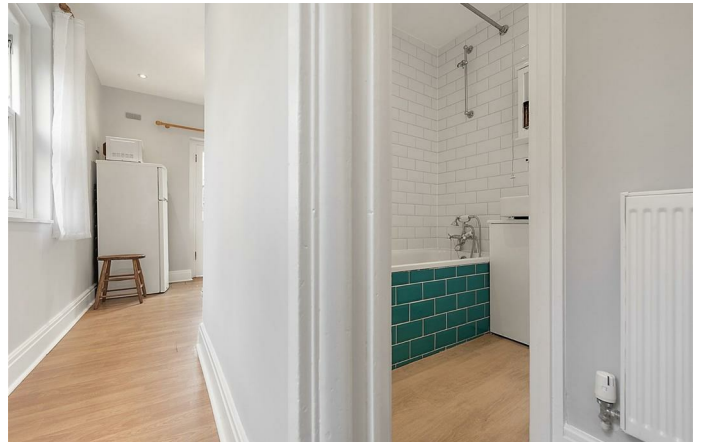
Mauleverer is nestled within a popular pocket of SW2, sandwiched between Brixton and Clapham. The cafes, bars and restaurants of up-and-coming Acre Lane are easily accessible and within a further few minutes' walk down the road you will find yourself in the heart of Brixton, with Brixton Village, POP Brixton, The Ritzy cinema and the legendary Brixton Academy all at their fingertips. There are excellent transport links with Clapham Overground, the Northern Line (Clapham North and Clapham Common tube stations) and the Victoria Line (Brixton tube station) within a 7 minute's walk away.

Features

- One bedroom
- Bright and Airy
- Private garden
- Victorian conversion
- Mix of characterful features and contemporary design
- Own front door
- Quiet residential street within a ten-minute walk to Brixton and Clapham
- Access to the Victoria and Northern tube lines and Clapham Overground

Council tax band

EPC rating D (59)

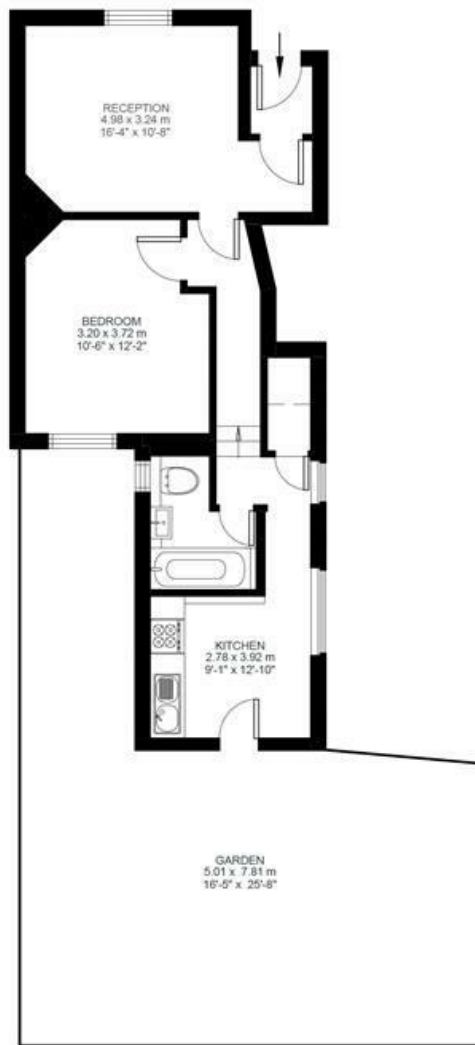


Mauleverer Road, Brixton, SW2

Mauleverer Road, Brixton, SW2

1 Bedroom Flat

Approximate internal area: 507 sqft 47 sqm



Ground Floor



While we do try our very best, floor plans are produced as a guide only and we take no responsibility for the precise accuracy with which any property is represented.

Mauleverer Road, Brixton, SW2

