

Coal Lane, Brixton, SW9

2 bedroom flat - purpose built for sale

£600,000

Leasehold

Property Details

A fantastic two double bedroom, two bathroom penthouse apartment with a sunny private terrace, in a luxury modern development in the heart of Brixton. The grounds include a communal terrace, lift and bike storage. Set within a modern build with incredible heat and noise insulation and finished with exceptional attention to detail. An impressive open-plan reception has multiple large windows and glass doors opening out onto a private terrace. The contemporary kitchen is integrated with appliances, water filter and all you may need in worktop and storage space. Glass and natural light are a running theme throughout and the two double bedrooms are flooded with light from floor to ceiling large-pane windows. The principal bedroom benefits from fitted wardrobes and an en-suite with shower. There is a spacious luxury family bathroom with both shower and bath. Last but not least, two storage cupboards in the appealing entrance hall. There is a strong community feel to the building, a really pleasant place to live.

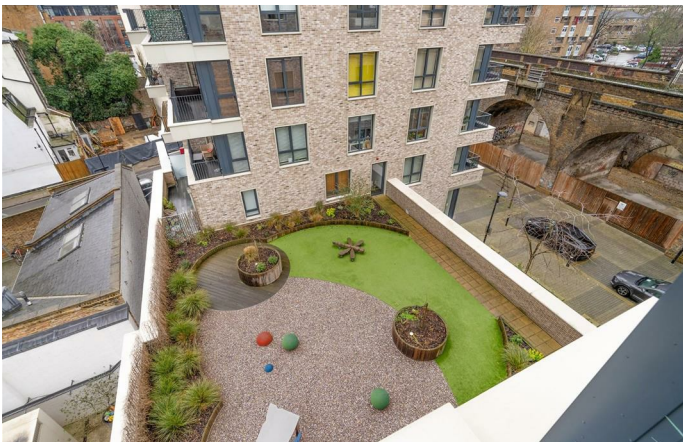
Features

- Two double bedrooms
- Two bathrooms
- South-facing private terrace
- Additional residents terrace
- Modern build with lift
- Almost 800 square feet
- Modern glazed windows, creating a tranquil setting
- Heart of Brixton in moments
- Excellent transport links
- Right to manage

Council tax band D

EPC rating B (85)





Coal Lane, Brixton, SW9

Coal Lane, SW9
2 Bedroom Flat

APPROXIMATE GROSS INTERNAL AREA: **782 SQ FT / 72.6 SQ M**



FOURTH FLOOR



While we try our very best, floor plans are produced as a guide only and we take no responsibility for the precise accuracy with which any property is represented.

Coal Lane, Brixton, SW9

