

## New Park Road, Brixton, SW2

2 bedroom flat - purpose built for sale

**£490,000**

Leasehold

### Property Details

A stunning example of a two bedroom, two bathroom flat with a private terrace off both lounge and bedroom. The building benefits from a secure cycle storage at the back of the property as well as a communal courtyard. This beautifully presented apartment feels like a home the moment you walk through the door. The property comprises a large and airy open-plan reception room with double doors leading to the private terrace. The sleek, contemporary kitchen is finished to a high standard, fitted with all the latest mod cons including a wine fridge and a boiling water tap. Adjacent is the first double bedroom, with access to the terrace this tranquil room has multiple built-in wardrobes. The principal bedroom is a sizeable double with a contemporary en-suite bathroom. The two bathrooms in this apartment boast a high standard of fittings with a warm and inviting feel. With three storage cupboards within the hallway, there are plenty of storage options. There are also Smart features including a built-in Sonos sound system in the lounge and principal bedroom, Nest central heating, a Wifi oven and video entry phone.

### Features

- Two double bedrooms
- Two bathrooms
- Private terrace with sunset views
- Secure modern development
- Nearly 800 square feet of internal living space
- Bike storage and communal courtyard
- Outstanding build warranty
- Tucked away quietly off Brixton Hill
- Local amenities on the doorstep
- Chain-free

Council tax band D

EPC rating B (83)







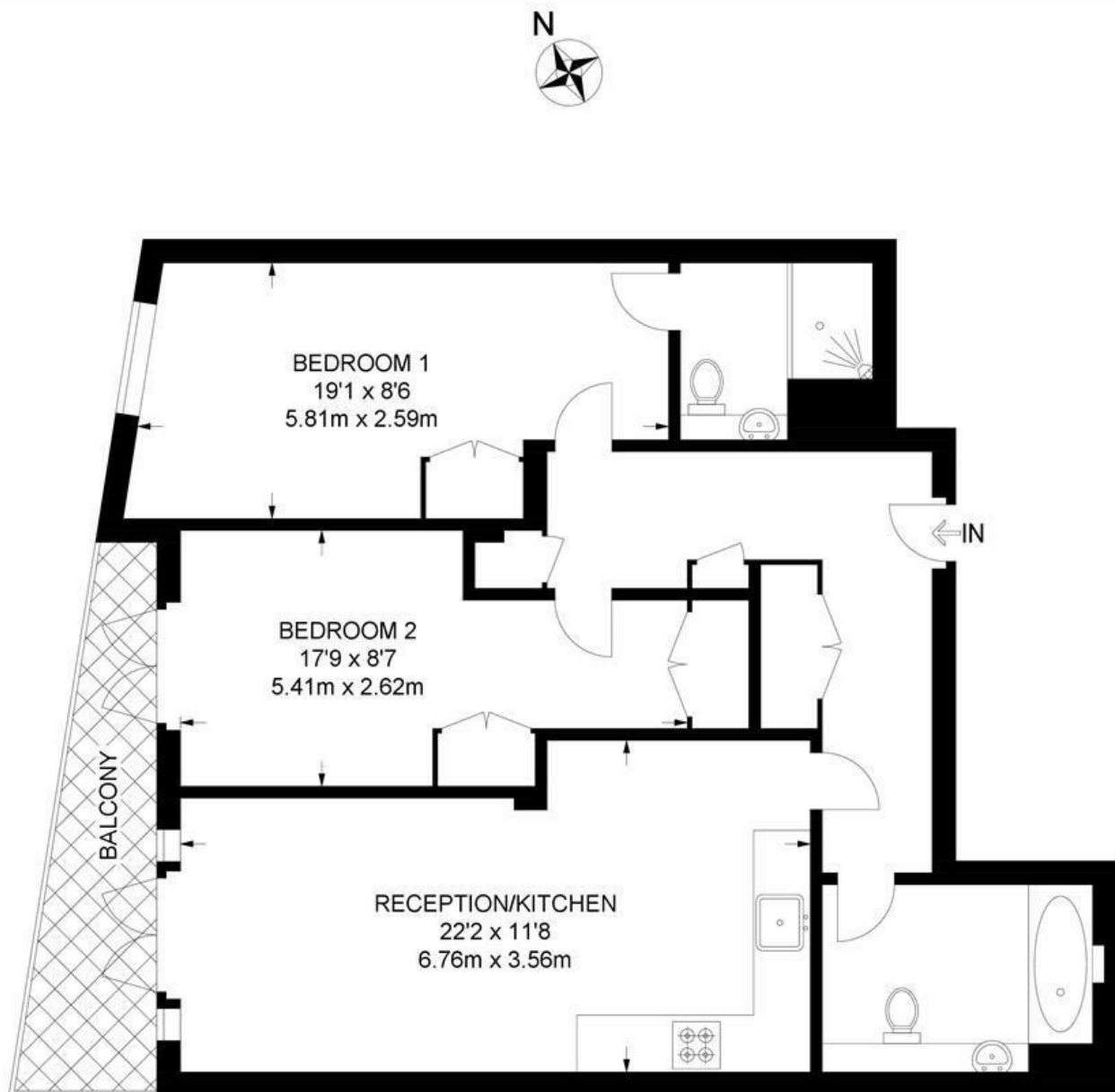


New Park Road, Brixton, SW2

## New Park Road, SW2

### 2 Bedroom Flat

APPROXIMATE GROSS INTERNAL AREA: 774 SQ FT / 72 SQ M



FIRST FLOOR



While we try our very best, floor plans are produced as a guide only and we take no responsibility for the precise accuracy with which any property is represented.



New Park Road, Brixton, SW2

