

Corrance Road, Brixton, SW2

1 bedroom flat - conversion for sale

£500,000

Share of Freehold

Property Details

A beautiful one bedroom apartment with a South-West facing garden in an end-of-terrace Victorian property with amenities in every direction. The fantastic reception has characterful ornate corning, high ceilings and original floorboards creating an inviting ambience ideal for dining or unwinding whilst bathed in light from the bay window. The separate dine-in kitchen is neutrally finished in shaker styling with cabinetry down both sides providing plentiful storage, with space on offer for a second dining area. A patio door leads from the kitchen to the wrap-around private garden. Easily maintained this pretty spot enjoys a sunny South-West facing aspect with a paved seating area framed by raised beds and surrounded by leafy trees including a palm. Quietly nestled to the rear overlooking the side return of the garden, the bedroom is a comfortable double room with fitted wardrobes, beautifully corniced ceilings and cosy carpets. The bathroom has a bathtub plus overhead shower with space for storage. A cellar offers additional storage. Precedent has been set should the purchaser wish to seek the necessary permissions to extend and convert into a two bedroom in the future.

Features

- One double bedroom
- South-West facing private garden
- End-of-terrace Victorian conversion
- Potential to extend STNP
- Quiet residential street an equal distance to Brixton and Clapham High Streets
- Amenities in every direction
- Victoria and Northern lines
- Share of freehold
- Chain-free

Council tax band C EPC rating D (63)



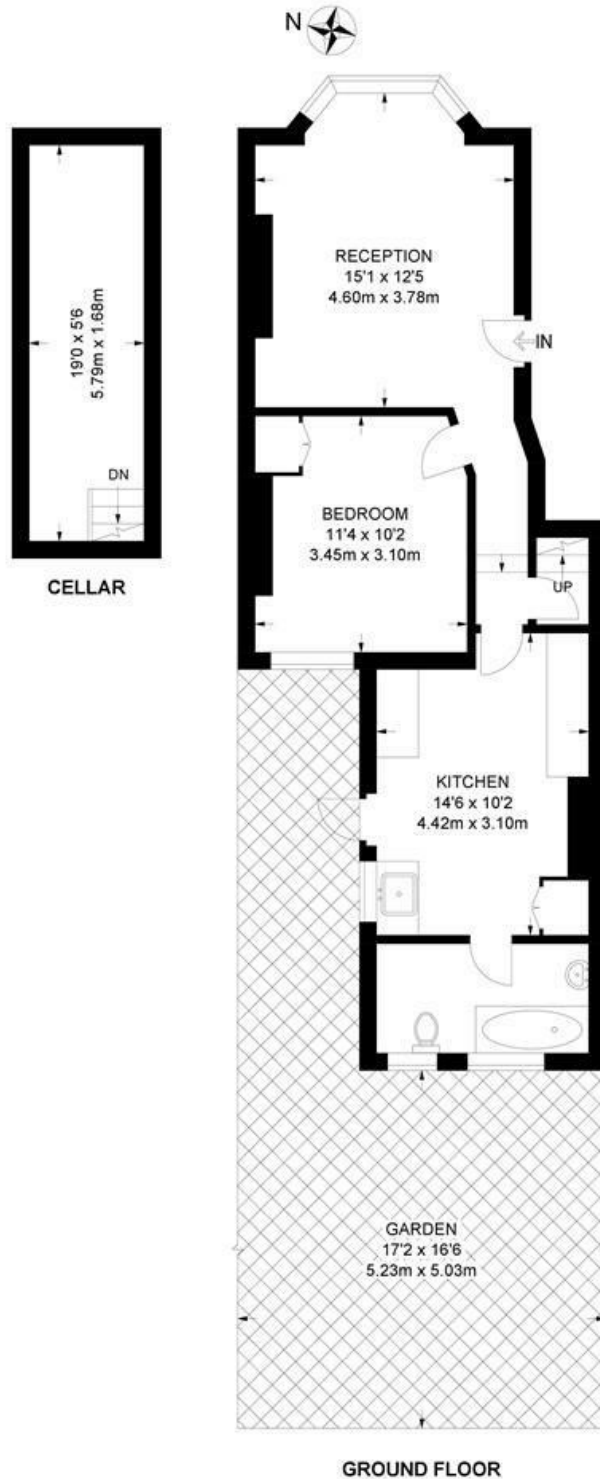
Corrance Road, Brixton, SW2

Corrance Road, SW2

1 Bedroom Flat

APPROXIMATE GROSS INTERNAL AREA WITH CELLAR: 642 SQ FT / 59.6 SQ M

APPROXIMATE GROSS INTERNAL AREA WITHOUT CELLAR: 537 SQ FT / 49.9 SQ M



While we try our very best, floor plans are produced as a guide only and we take no responsibility for the precise accuracy with which any property is represented.

Corrance Road, Brixton, SW2

