



Regis Place, Brixton, SW2

2 bedroom house - end terrace for sale

£675,000

Freehold

Property Details

A fantastic two double bedroom, two bathroom end-of-terrace house with a garden and off-street parking, peacefully set back within a gated mews. This elegant house is a rare gem packed full of potential that should not be missed, with the opportunity to add your own decorative touches, highlighting the features and bringing this wonderful property to life. The semi-open plan reception has cavernous proportions with a characterful brick fireplace adding to the ambience. The dine-in kitchen has plentiful storage within modern cabinetry with the sweeping curvature of a wall creating the ideal nook for a dining table, with plenty of space for an additional, more formal table in the reception if desired. The low-maintenance private garden is ready to enjoy the moment the weather permits. An elegant open staircase leads upstairs. The principal bedroom is a luxuriously large suite where the sweeping arch of the wall can be fully appreciated. This lovely room is equipped with generous built-in wardrobes and an en-suite. The main bathroom has a bathtub with overhead shower, conveniently set next to the second double bedroom. There is also the rarity of an allocated off-street parking space within the gated grounds.

Features

- Two double bedrooms
- Two bathrooms
- Private garden
- End-of-terrace freehold house
- Secure gated mews development
- Off-street allocated parking
- Central Brixton a five-minute walk
- Clapham High Street a twelve-minute stroll
- Victoria and Northern lines
- Chain-free

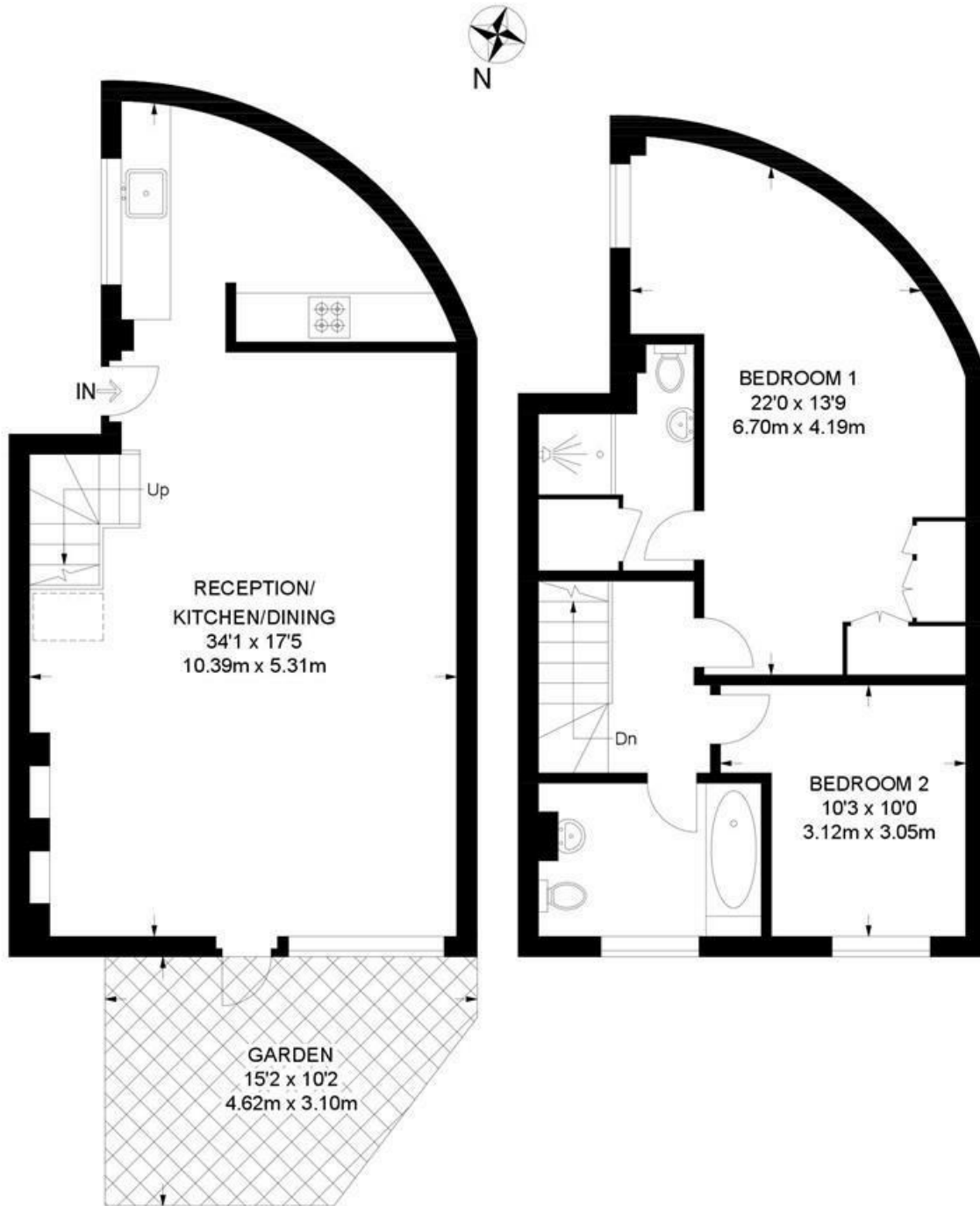
Council tax band E EPC rating C (69)



Regis Place, Brixton, SW2

Regis Place, SW2
2 Bedroom Flat

APPROXIMATE GROSS INTERNAL AREA: 992 SQ FT / 92.1 SQ M



GROUND FLOOR

FIRST FLOOR



While we try our very best, floor plans are produced as a guide only and we take no responsibility for the precise accuracy with which any property is represented.

Regis Place, Brixton, SW2

