

**Brixton Hill, Brixton, SW2**

1 bedroom flat - purpose built for sale

**£435,000**

Leasehold

## Property Details

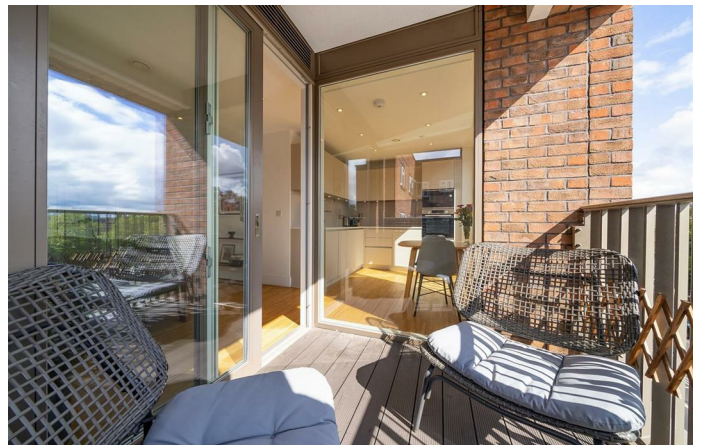
An exceptional one bedroom apartment with a private terrace and three Juliet balconies, in a sought-after luxury building. The open-plan reception boasts floor-to-ceiling glass dominating two walls, a wonderfully bright ambience. The lounge is the ideal place to unwind in an evening, to the twinkling city lights, the contemporary kitchen is fully integrated and neatly arranged, still allowing room for a dining table. Two Juliet balconies allow air to breeze through the room, whilst sliding doors flow to the private terrace. South-facing this low-maintenance terrace is perfect for al-fresco dining or simply drinking in the scenery. The bedroom is a generous and bright double with full-height glass doors leading to yet another Juliet balcony, a lovely setting for relaxing weekends. The proportions allow space for a Super King bed in addition to built-in wardrobes, further storage and a desk if desired. The bathroom is spacious with mirrored storage and bathtub with overhead shower. Other selling points include underfloor heating throughout, built-in storage in the entrance, timber oak flooring and downlighting. The building has lifts, remaining build warranty, bike store, parcels lockers, resident's garden and resident's roof terrace with impressive views.

## Features

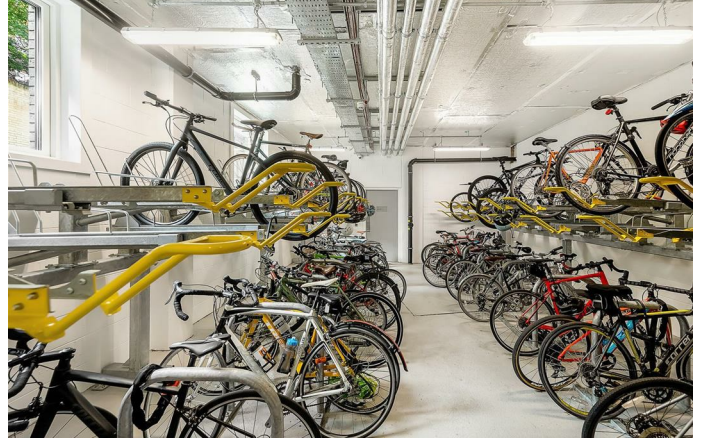
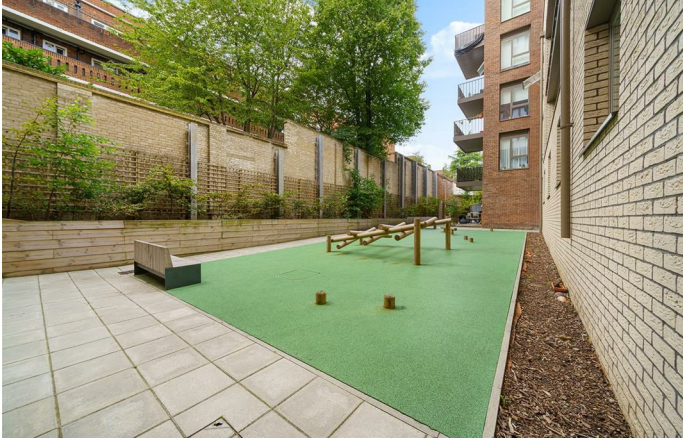
- One double bedroom
- Private South-facing terrace plus three Juliet balconies
- Over 580 square feet
- Underfloor heating throughout
- Resident's roof terrace and garden
- Secure bike storage and lift
- Central Brixton, moments from Brixton tube station and Brixton Village
- A short stroll to Brockwell Park
- Chain-free

Council tax band C    EPC rating B (84)







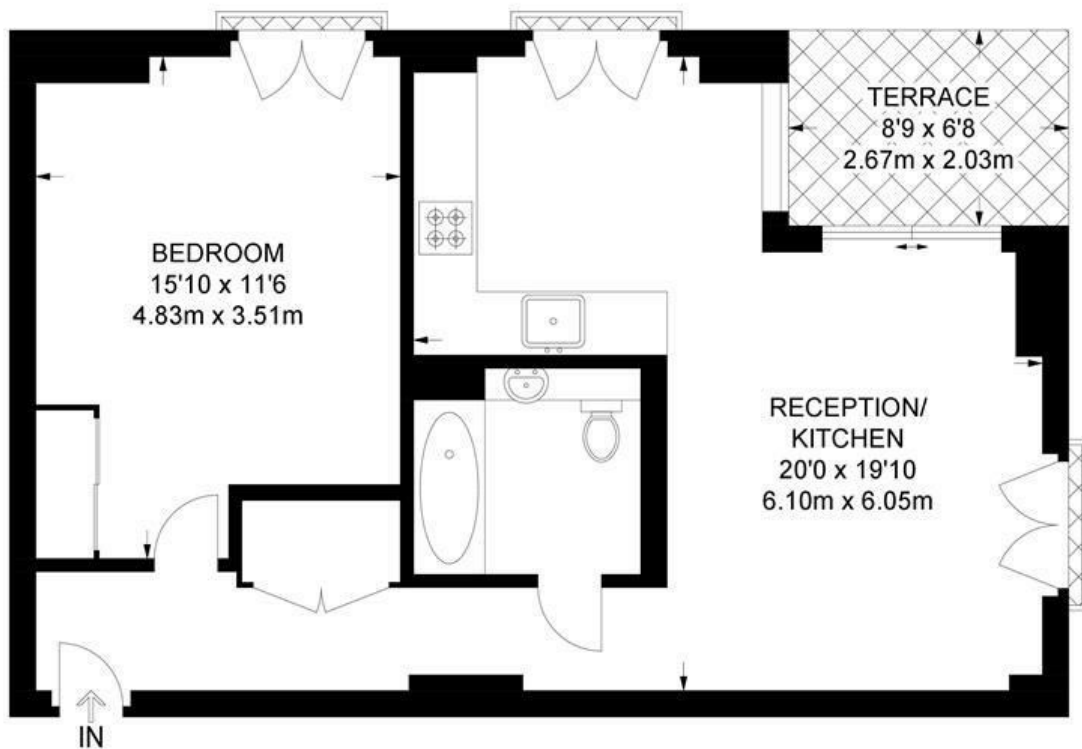




Brixton Hill, Brixton, SW2

**Somerset Place, SW2**  
**1 Bedroom Flat**

APPROXIMATE GROSS INTERNAL AREA: **581 SQ FT / 54 SQ M**



THIRD FLOOR



While we try our very best, floor plans are produced as a guide only and we take no responsibility for the precise accuracy with which any property is represented.

Brixton Hill, Brixton, SW2

