



Lambert Road, Brixton, SW2

1 bedroom flat - conversion for sale

£399,950

Leasehold

Property Details

A bright one double bedroom flat in a beautiful semi-detached Victorian house on the no-through part of Lambert Road. Set to the rear of the building this peaceful home is tucked away from the already quiet street, ensuring leafy views over the surrounding gardens from every room. Wooden steps with modern lighting features lead up to the large reception. This expansive room is sure to be regularly used, be it for hosting at the table or unwinding on the sofa in front of the marble feature fireplace. The separate kitchen has generous storage within sleek cabinetry, with wrap-around worktops and an ergonomic layout. With room for a more casual dining area, this is a truly sociable kitchen. The generously sized bedroom is a serene retreat with a light and calming atmosphere and plenty of space for the traditional furnishings. A well-designed bathroom completes this appealing home, with a bathtub plus overhead shower and sink with storage nestled under the sash window. The apartment has passed rigorous sound insulation tests and has fully insulated walls and double glazed windows, ideal for those looking for a peaceful retreat whilst still being able to enjoy the exciting bustle of Brixton and Clapham.

Council tax band C EPC rating C (78)

Features

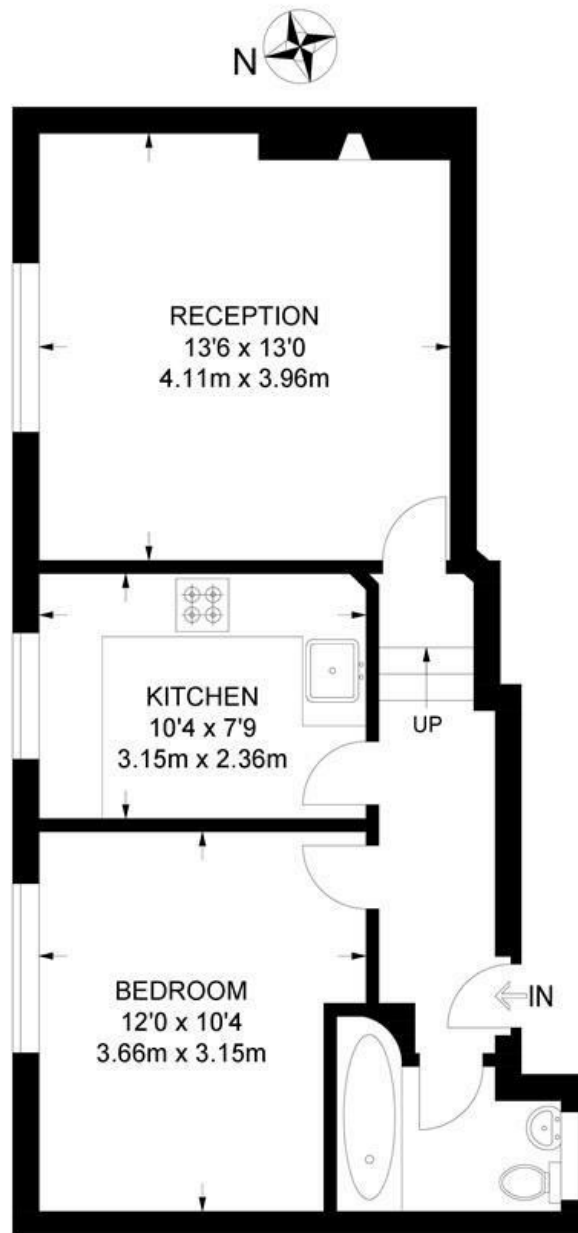
- One double bedroom
- Semi-detached Victorian conversion
- Peacefully tucked to rear of property
- Separate kitchen and reception
- Popular residential road
- Local amenities in all directions
- Short walk to central Brixton and Clapham
- Northern and Victoria tube lines
- Brockwell Park within strolling distance
- Chain-free



Lambert Road, Brixton, SW2

Lambert Road, SW2
1 Bedroom Flat

APPROXIMATE GROSS INTERNAL AREA: **476 SQ FT / 44.2 SQ M**



FIRST FLOOR



While we try our very best, floor plans are produced as a guide only and we take no responsibility for the precise accuracy with which any property is represented.

Lambert Road, Brixton, SW2

