

**Blairderry Road, Streatham Hill, SW2**

2 bedroom flat - purpose built for sale

**£525,000**

Leasehold

## Property Details

A sizeable two double bedroom, two bathroom apartment with a private terrace, in an attractive modern building in vibrant Streatham Hill. Finished to a high standard the home benefits from the perks of modern buildings including high energy efficiency, reducing bills. An expansive and sociable hub, the reception provides a wonderful space in which to dine at the table, relax on the sofa, or cook up a tasty treat. The integrated kitchen wraps around maximising space with worktop lighting creating a pleasant evening ambience. The spacious lounge area is set in front of floor-to-ceiling windows adding to the bright and airy atmosphere, with a patio door leading out to the private terrace. Relish the summer on the terrace overlooking the greenery of the development, with the potential to dress this low-maintenance spot with pretty potted plants or lighting features to enhance evening drinks or al-fresco dining. Both bedrooms are spacious doubles with plush carpets promoting a soothing ambience and the space for a desk or dressing table if required. The principal bedroom also has built-in wardrobes and an en-suite. The main bathroom has a bathtub with overhead shower. A handy cupboard in the inviting hallway offers additional storage.

## Features

- Two double bedrooms
- Two bathrooms
- Private terrace
- Secure modern build
- 800 square feet of internal space
- Amenities of Streatham's vibrant high street on the doorstep
- Streatham Hill station a four-minute walk
- Tooting Bec common within strolling distance
- Chain-free

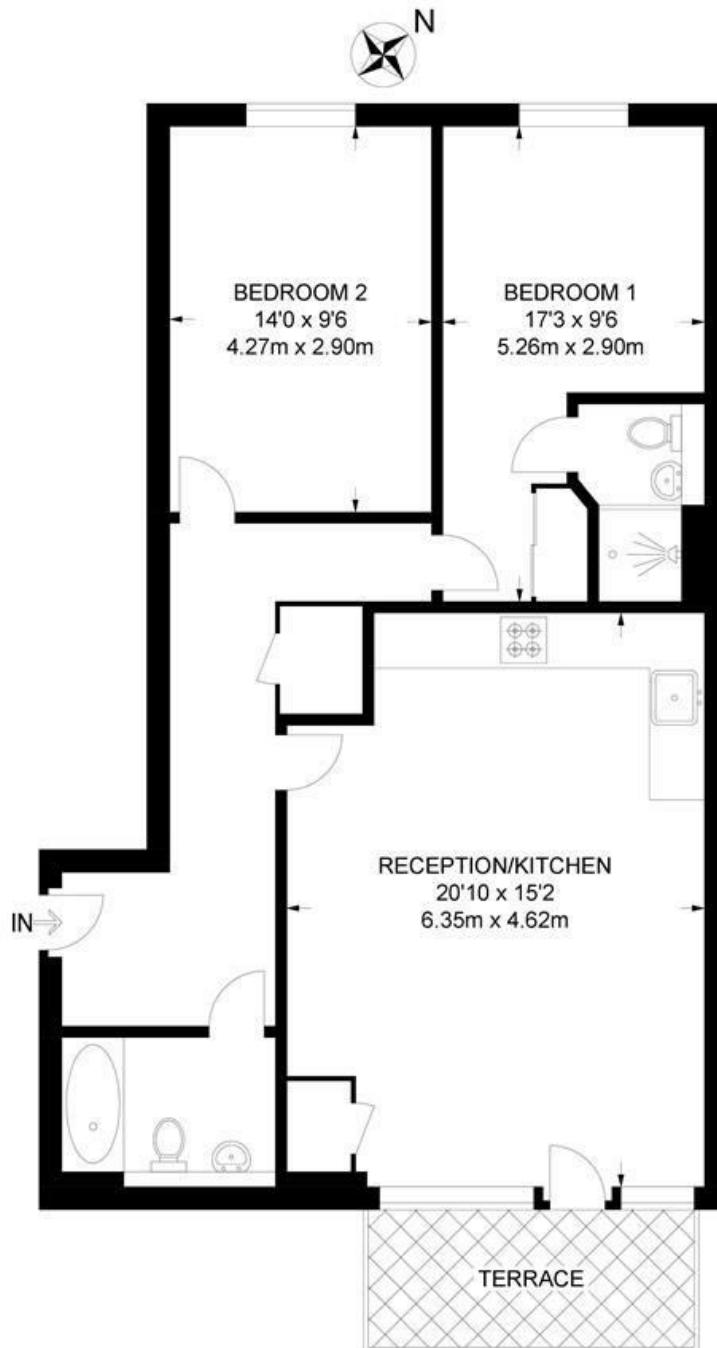
Council tax band D      EPC rating B (85)



Blairderry Road, Streatham Hill, SW2

**Blairderry Road, SW2**  
**2 Bedroom Flat**

APPROXIMATE GROSS INTERNAL AREA: **800 SQ FT / 74.3 SQ M**



**SECOND FLOOR**



While we try our very best, floor plans are produced as a guide only and we take no responsibility for the precise accuracy with which any property is represented.

Blairderry Road, Streatham Hill, SW2

