



**Kingswood Road, Brixton, SW2**

1 bedroom flat to let

**£403 Per Week**

Furnished

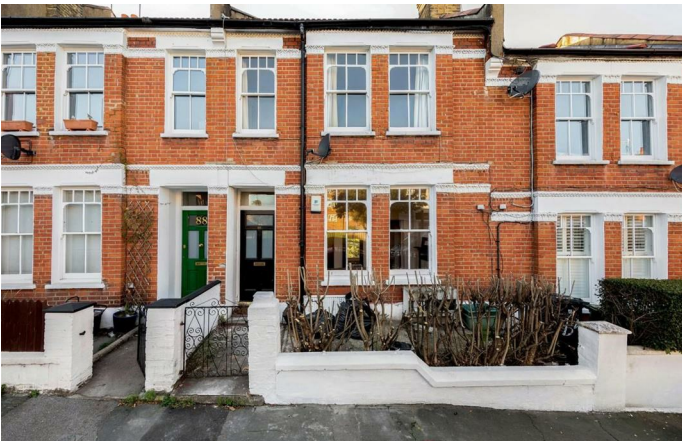
## Property Details

This characterful one double bedroom flat is situated on a quiet residential street in Brixton. The flat comprises of a large separate kitchen, a spacious reception room perfect for entertaining guests, a spacious double bedroom with large windows, which floods the room with natural light, and a modern family size bathroom. This property is a stroll away from the popular Brockwell park and the local gym and supermarkets. The travel links into the city are quick with Brixton and Clapham being within walking distance giving you access to both the Victoria and Northern lines.

## Features

- Private garden
- Excellent transport links

Council tax band C      EPC rating D (67)



# K

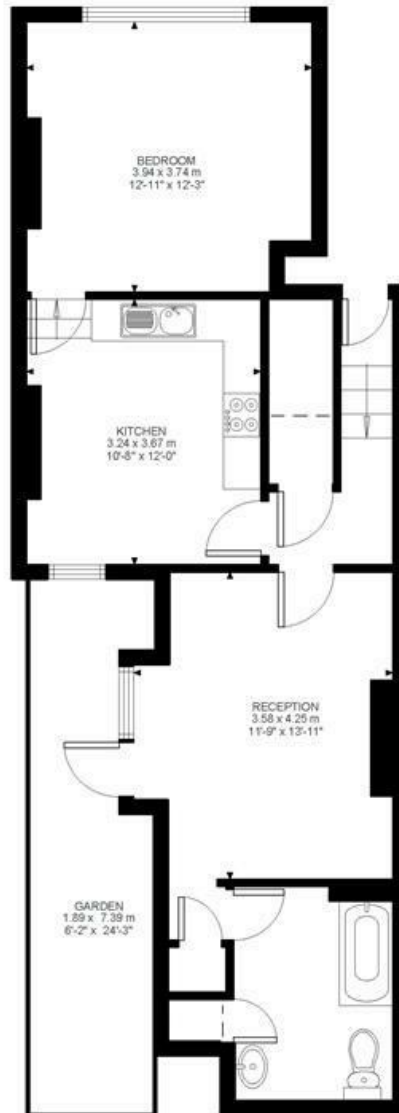
## Kingswood Road

1 Bed flat

Approx internal area:

**602 sqft 56 sqm**

While we do try our very best, floor plans are produced as a guide only and we take no responsibility for the precise accuracy with which any property is represented



Ground Floor



Kingswood Road, Brixton, SW2

