

HoldenCopley

PREPARE TO BE MOVED

Portside Street, Nottingham, Nottinghamshire NG2 4DN

£1,250 PCM

EXCLUSIVE NEW DEVELOPMENT...

This brand-new, energy-efficient two-bedroom ground-floor apartment is now available to rent, offering modern living in the heart of Nottingham's Trent Basin vibrant area. Finished with neutral décor throughout, this stylish home provides a perfect blank canvas for personalization, perfect for any couples or working professionals. Ideally located within walking distance to a range of amenities and Riverside walks, this apartment is perfect for those seeking convenience and city living. The property features a spacious open-plan kitchen/dining/living area, complete with high-spec integrated and freestanding appliances. Both bedrooms are generously sized, while the sleek bathroom includes a walk-in double shower enclosure. Externally, residents can enjoy a private, enclosed rear garden with a paved seating area—ideal for relaxing outdoors. Additionally, residents* have access to an allocated parking space providing off-street parking for one car. Designed with sustainability in mind, this apartment benefits from gas central heating and high-quality Velfac windows and doors with aluminium exteriors and timber interiors. This exceptional rental opportunity is ready for immediate occupancy. Viewing is highly recommended to fully appreciate the quality and contemporary features of this stunning home.

AVAILABLE NOW!



- Brand New Energy Efficient Apartment
- Two Bedrooms
- Open Plan Kitchen/Living Area
- Three Piece Bathroom Suite
- Un-Furnished
- Modern Neutral Decor Throughout
- Situated On An Exclusive Development
- Allocated Parking Space
- Low Energy Home, EPC B
- 360 Virtual Tour

ACCOMMODATION

Entrance Hall

9'11" x 8'3" (max) (2.79m x 2.54m (max))

The entrance hall has tile effect laminate flooring, wall mounted intercom, smoke alarm, recessed ceiling spotlights, radiator and a single door providing access into the accommodation

Kitchen

13'5" x 10'2" (4.11m x 3.10m)

The kitchen area has tile effect laminate flooring, recessed ceiling spotlights, a range of fitted wall and base units with fitted worksurfaces, integrated oven with electric hobs and a extractor unit, stainless steel sink and a half with a drainer and mixer taps, integrated dishwasher, freestanding washing machine, integrated fridge/freezer, space for a dining table and chairs and open plan to the living area.

Living Room

9'11" x 13'1" (3.04m x 4.00m)

The living area has tile effect laminate flooring, recessed ceiling spotlights, radiator, a range of double glazed internal timber & external aluminium windows with a curtain and a internal timber & external aluminium single door providing access to outside

Master Bedroom

17'4" x 9'11" (5.29m x 3.04m)

The main bedroom has carpeted flooring, two radiators, two double glazed internal timber & external aluminium windows with a curtain and a single internal timber & external aluminium door providing access to outside

Bedroom Two

8'9" x 12'1" (2.67m x 3.69m)

The second bedroom has carpeted flooring, a radiator and two double glazed single internal timber & external aluminium windows with fitted blinds

Bathroom

6'1" x 8'1" (1.87m x 2.47m)

The bathroom has tile effect laminate flooring, partially tiled walls, recessed ceiling spotlights, wall mounted chrome heated towel rail, washbasin with mixer taps, low level dual flush wall mounted WC, a shower enclosure with a wall mounted mains-fed shower, extractor fan and a double glazed internal timber & external aluminium obscure window with a fitted blind

Boiler Room

8'9" x 3'5" (2.67m x 1.06m)

The boiler room has wood effect laminate flooring, a wall mounted boiler, smoke alarm, a built in wall safe, coat hooks and a double glazed single timber & external aluminium window

OUTSIDE

Outside there is access to a secure, private low maintenance courtyard style garden with a wall and fence surround

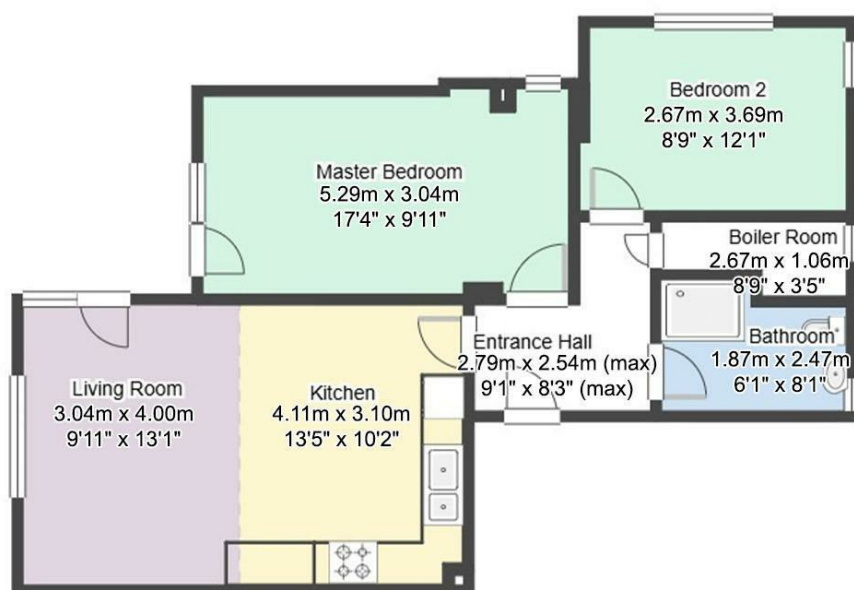
Energy Efficiency Rating		
	Current	Potential
Very energy efficient - lower running costs		
(92 plus) A		
(81-91) B		
(69-80) C		
(55-68) D		
(39-54) E		
(21-38) F		
(1-20) G		
Not energy efficient - higher running costs		
	83	83
England & Wales	EU Directive 2002/91/EC	

Environmental Impact (CO ₂) Rating		
	Current	Potential
Very environmentally friendly - lower CO ₂ emissions		
(92 plus) A		
(81-91) B		
(69-80) C		
(55-68) D		
(39-54) E		
(21-38) F		
(1-20) G		
Not environmentally friendly - higher CO ₂ emissions		
England & Wales	EU Directive 2002/91/EC	



Portside Street, Nottingham, Nottinghamshire NG2 4DN

HoldenCopley
PREPARE TO BE MOVED



FLOORPLAN IS FOR ILLUSTRATIVE PURPOSES ONLY

All measurements walls, doors, windows, fittings and appliances, their sizes and locations are an approximate only.
They cannot be regarded as being a representation by the seller nor their agent and is for identification only. Not to scale.
© HoldenCopley

01158228800

4 Croft Road, Arnold, Nottingham, NG5 7DX

lettings@holdencopley.co.uk

www.holdencopley.co.uk

Agents Disclaimer: HoldenCopley, their clients and employees I: Are not authorised to make or give any representations or warranties in relation to the property either here or elsewhere, either on their own behalf or on behalf of their client or otherwise. They assume no responsibility for any statement that may be made in these particulars. These particulars do not form part of any offer or contract and must not be relied upon as statements or representations of fact. 2: Any areas, measurements or distances are approximate. The text, photographs and plans are for guidance only and are not necessarily comprehensive. It should not be assumed that the property has all necessary planning, building regulation or other consents and HoldenCopley have not tested any services, equipment or facilities. Purchasers must make further investigations and inspections before entering into any agreement.