

# HoldenCopley

PREPARE TO BE MOVED

Sneinton Dale, Sneinton, Nottinghamshire, NG3 7DN

---

£725 PCM

Sneinton Dale, Sneinton, Nottinghamshire, NG3 7DN





## APARTMENT LIVING...

This one bedroom first floor apartment is beautifully presented throughout boasting modern neutral decor making the perfect home for any couples or working professionals looking to be located in the popular location of Sneinton closely situated to a range of shops, eateries and transport links into the City Centre. Internally the property comprises of a spacious modern fitted kitchen with a range of integrated appliances with additional space for freestanding appliances, inclusive of a living area and a double bedroom serviced by a three piece shower room. Outside to the front is availability for off street parking with a fence surround and gated access.

AVAILABLE END OF APRIL!





- First Floor Apartment
- One Double Bedroom
- Modern Fitted Kitchen/Living Room
- Three Piece Shower Suite
- Modern Neutral Decor Throughout
- Off Street Parking Available For One Car
- Popular Location
- 360 Virtual Tour









ACCOMMODATION

Communal Entrance Hall

6'3" x 3'2" (1.92m x 0.98m)

The communal entrance hall carpeted flooring and stairs, smoke alarm and a single UPVC door providing access into the accommodation

Kitchen/Living Room

20'3" x 11'6" (6.18m x 3.52m)

The kitchen/living room has wood effect flooring, a wall mounted electric heater, TV point, recessed ceiling spotlights, a range of fitted wall and base units with wood effect worksurfaces, smoke alarm, integrated oven with electric hobs, stainless steel splashback and an extractor fan, stainless steel sink and a half with a drainer and mixer taps, space for a fridge and other appliances and two UPVC double glazed window to the front elevation

Bedroom

11'6" x 10'7" (3.51m x 3.23m)

The bedroom has wood effect flooring, a wall mounted electric heater, smoke alarm and a UPVC double glazed window to the front elevation

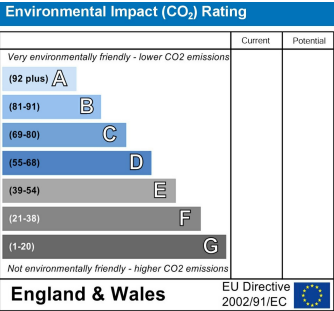
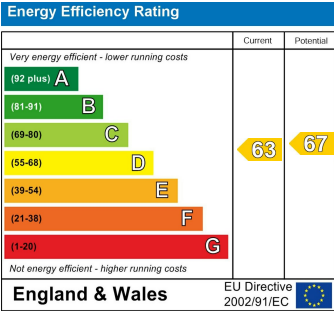
Bathroom

6'3" x 7'10" (1.92m x 2.41m)

The bathroom has wood effect flooring, a vanity washbasin with mixer taps, low level flush WC, corner shower enclosure with a wall mounted electric shower, an extractor fan and a UPVC double glazed obscure window

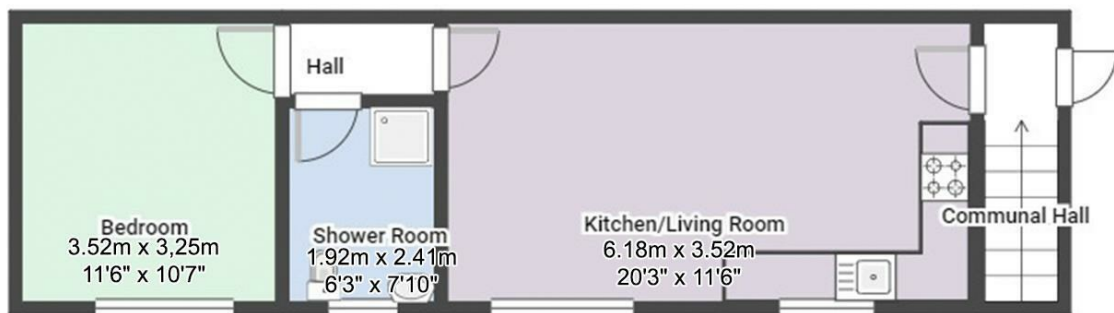
OUTSIDE

Outside to the front is availability for off street parking for one car with a wall surround



Sneinton Dale, Sneinton, Nottinghamshire, NG3 7DN

**HoldenCopley**  
PREPARE TO BE MOVED



FLOORPLAN IS FOR ILLUSTRATIVE PURPOSES ONLY

All measurements walls, doors, windows, fittings and appliances, their sizes and locations are an approximate only.  
They cannot be regarded as being a representation by the seller nor their agent and is for identification only. Not to scale.  
© HoldenCopley

**01158228800**

**4 Croft Road, Arnold, Nottingham, NG5 7DX**

**lettings@holdencopley.co.uk**

**www.holdencopley.co.uk**

Agents Disclaimer: HoldenCopley, their clients and employees I: Are not authorised to make or give any representations or warranties in relation to the property either here or elsewhere, either on their own behalf or on behalf of their client or otherwise. They assume no responsibility for any statement that may be made in these particulars. These particulars do not form part of any offer or contract and must not be relied upon as statements or representations of fact. 2: Any areas, measurements or distances are approximate. The text, photographs and plans are for guidance only and are not necessarily comprehensive. It should not be assumed that the property has all necessary planning, building regulation or other consents and HoldenCopley have not tested any services, equipment or facilities. Purchasers must make further investigations and inspections before entering into any agreement.