

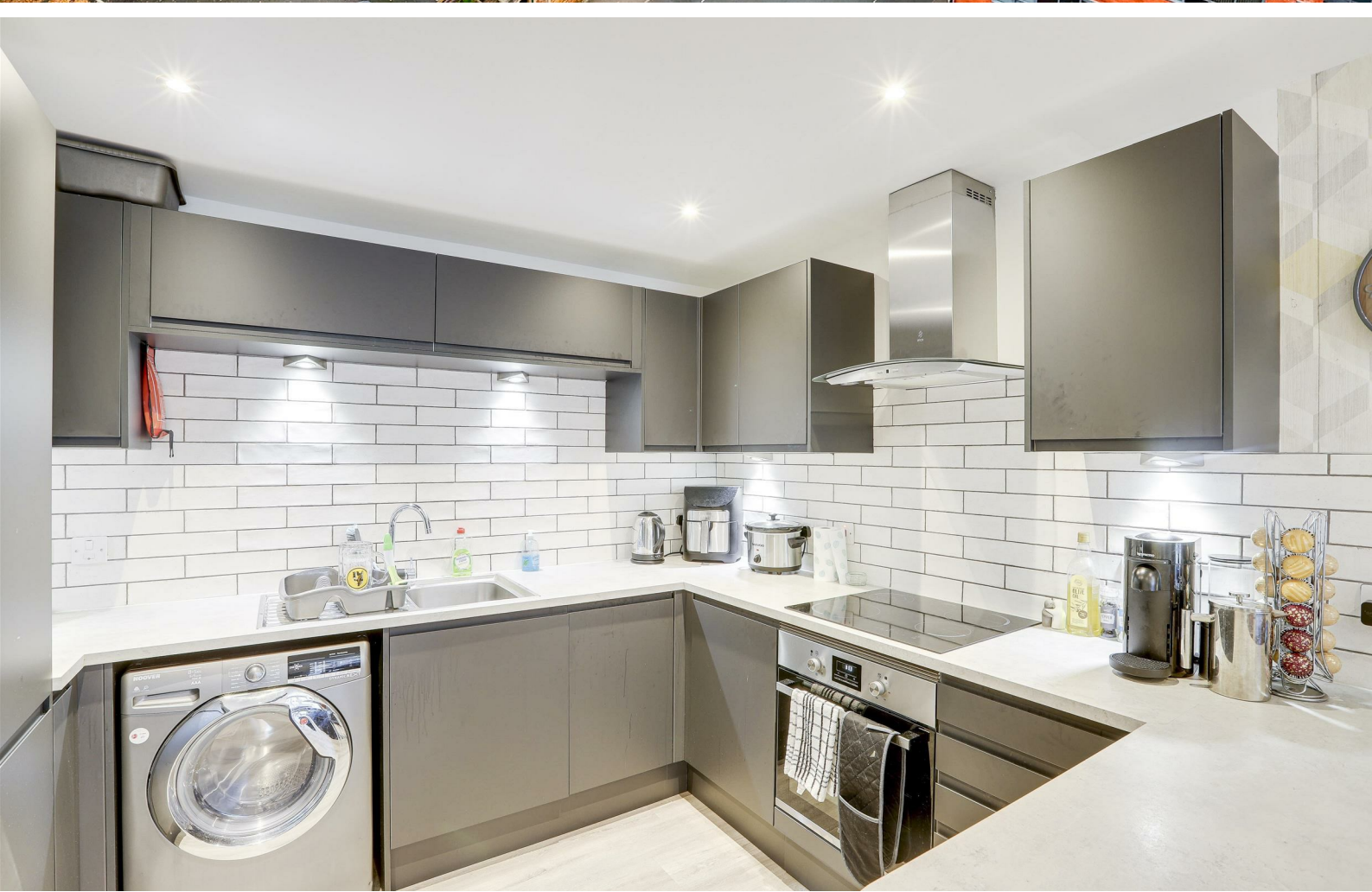
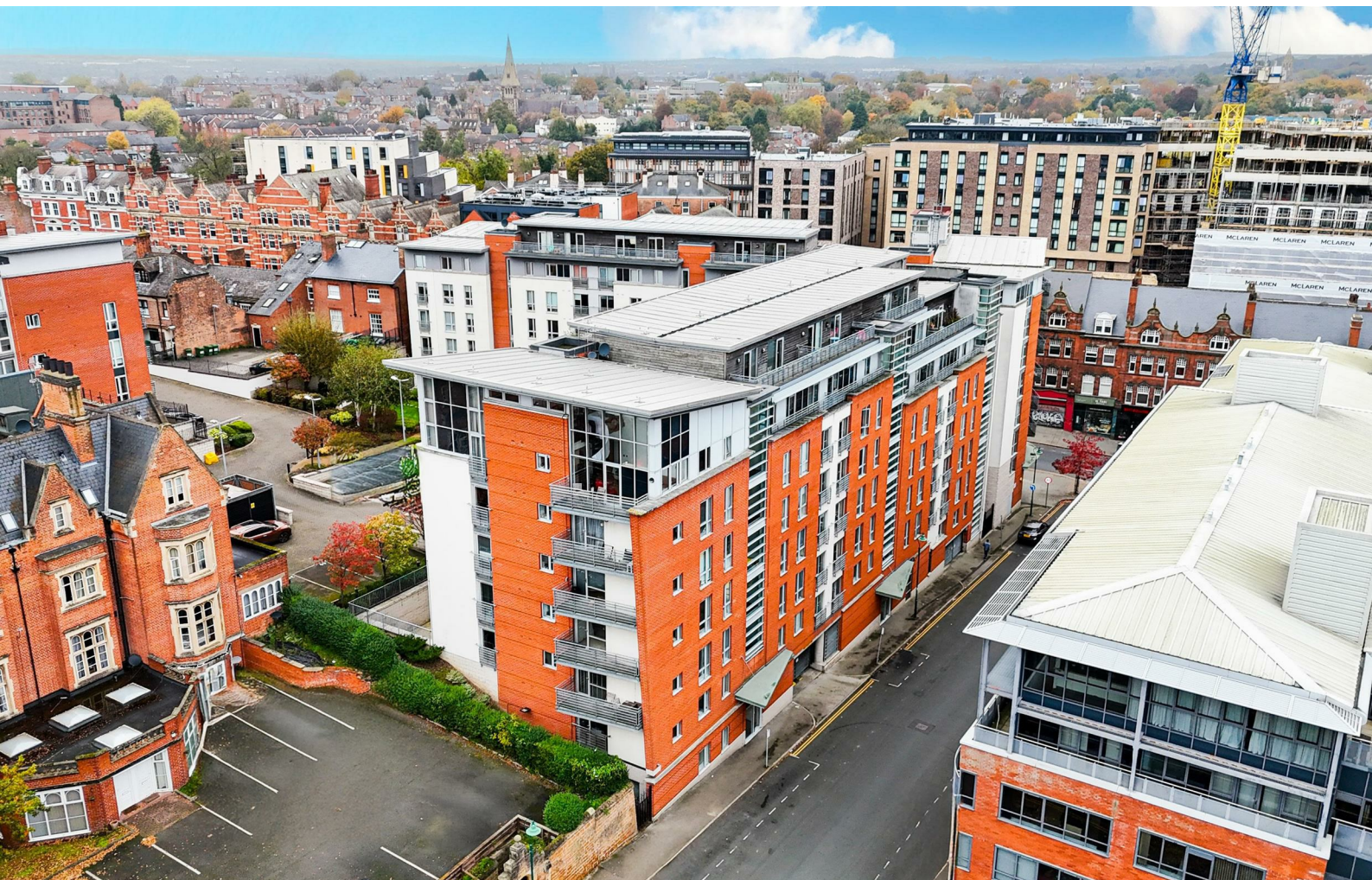
HoldenCopley

PREPARE TO BE MOVED

Ropewalk Court, Derby Road, Nottingham NG1 5AD

£1,387 PCM

Ropewalk Court, Derby Road, Nottingham NG1 5AD



LOCATION, LOCATION LOCATION...

This luxurious two-bedroom prestige apartment in the sought-after Ropewalk Court Complex situated in the heart of Nottingham City Centre, offers spacious and modern living with the added benefit of lift access. Beautifully presented and fully furnished, it's move-in ready, ideal for students or professionals seeking convenience and style. Situated just 0.3 miles from Nottingham Trent University and on a direct bus route to the University of Nottingham, it provides exceptional access to local amenities such as shops, and eateries. The apartment features an inviting entrance hall, a large open-plan kitchen/living area equipped with high-spec integrated and freestanding appliances and two double bedrooms, each serviced with its own sleek three-piece shower suite. Additional perks include a secure allocated parking space for one vehicle. Viewing is highly recommended to fully appreciate this outstanding property.

Available from 1st August 2025 for the 2025/2026 academic year!

Rent payable is equivalent to £160pppw





- Two Bedroom Apartment
- Modern Fitted Kitchen/Living Area
- Two Shower Rooms
- Fully-Furnished
- Secure Allocated Parking Space
- City Centre Location
- *50 Week Lease*
- Bills Excluded
- £160 PP/PW
- TV License Included





ACCOMMODATION

Entrance Hall

16'0" max x 8'1" (4.88m max x 2.47m)

The hall has wood effect flooring, recessed ceiling spotlights, in-built storage cupboard, wall mounted heater, shoe storage cupboard, wall mounted coat hooks, mirror, picture and a single door providing access into the accommodation

Open Plan Living/Kitchen Area

9'9" x 26'4" max (2.98m x 8.04m max)

The kitchen has wood effect flooring, partially tiled walls, recessed ceiling spotlights, a range of fitted wall and base units with fitted worksurfaces, breakfast bar, stools, integrated oven with an induction hob and an over hood extractor fan, integrated fridge/freezer, stainless steel sink with a drainer and mixer taps, washer/dryer, integrated dishwasher and is open plan to the living area.

The living room has wood effect flooring, recessed ceiling spotlights, two wall mounted heaters, sofa and arm chair, wall mounted TV, coffee table, sideboard, a range of pictures, free-standing lamp, smoke alarm and a double glazed window with fitted blinds

Bedroom One

7'10" x 11'9" max (2.41m x 3.59m max)

The first bedroom has wood effect flooring, recessed ceiling spotlights, a 4ft double bed with a mattress, fitted double wardrobe with in-built fitted drawers, desk with computer chair, wall mounted heater and a double glazed window with a fitted blind

Shower Room

4'11" x 5'5" (1.50m x 1.67m)

The shower room has wood effect flooring, fully tiled walls, recessed ceiling spotlights, low level dual flush WC, washbasin with mixer taps, wall mounted chrome towel rail, walk in shower enclosure with a wall mounted waterfall shower and a shower over with a shower screen and an extractor fan

Bedroom Two

7'9" x 11'11" max (2.37m x 3.64m max)

The second bedroom has wood effect flooring, recessed ceiling spotlights, double fitted wardrobe with in-built fitted drawers, a 4ft double bed with a mattress, wall mounted heater, desk and a computer chair and a double glazed window with fitted blinds

Shower Room

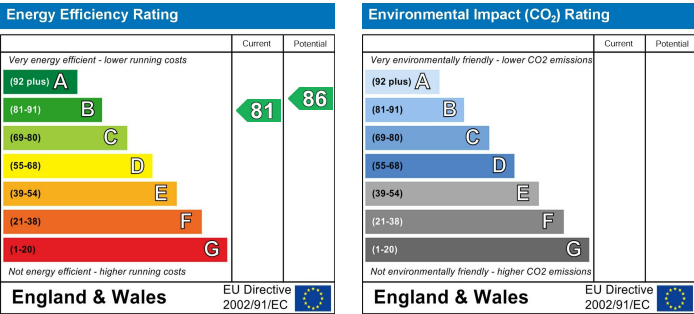
4'11" x 5'5" (1.50m x 1.67m)

The shower room has wood effect flooring, fully tiled walls,

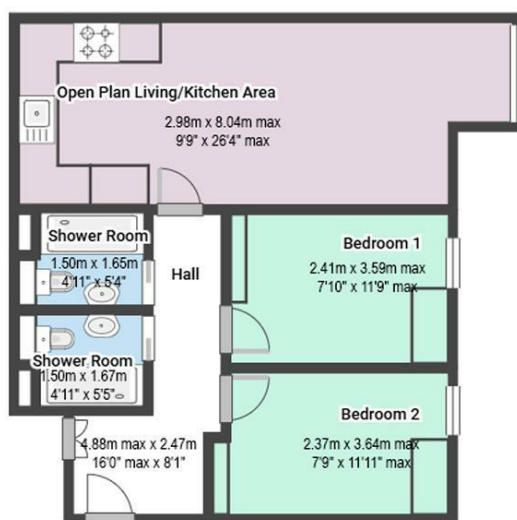
recessed ceiling spotlights, low level dual flush WC, washbasin with mixer taps, wall mounted chrome towel rail, walk in shower enclosure with a wall mounted waterfall shower and a shower over with a shower screen and an extractor fan

OUTSIDE

Outside there is a small communal garden area with an undercover allocated parking space for one car with access via a secure electric gate



Ropewalk Court, Derby Road, Nottingham NG1 5AD



FLOORPLAN IS FOR ILLUSTRATIVE PURPOSES ONLY

All measurements walls, doors, windows, fittings and appliances, their sizes and locations are an approximate only. They cannot be regarded as being a representation by the seller nor their agent and is for identification only. Not to scale.

© HoldenCopley

01158228800

4 Croft Road, Arnold, Nottingham, NG5 7DX

lettings@holdencopley.co.uk

www.holdencopley.co.uk

Agents Disclaimer: HoldenCopley, their clients and employees I: Are not authorised to make or give any representations or warranties in relation to the property either here or elsewhere, either on their own behalf or on behalf of their client or otherwise. They assume no responsibility for any statement that may be made in these particulars. These particulars do not form part of any offer or contract and must not be relied upon as statements or representations of fact. 2: Any areas, measurements or distances are approximate. The text, photographs and plans are for guidance only and are not necessarily comprehensive. It should not be assumed that the property has all necessary planning, building regulation or other consents and HoldenCopley have not tested any services, equipment or facilities. Purchasers must make further investigations and inspections before entering into any agreement.