

HoldenCopley

PREPARE TO BE MOVED

Holland Street, Hyson Green, Nottinghamshire, NG7 5DS

£895 PCM

Holland Street, Hyson Green, Nottinghamshire, NG7 5DS

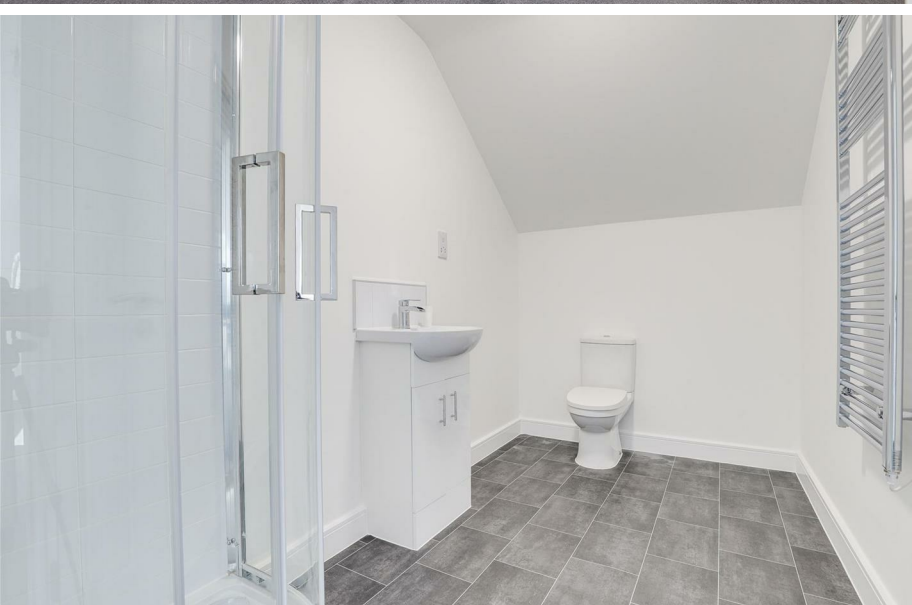


APARTMENT LIVING...

This two bedroom second floor apartment is beautifully presented throughout boasting of modern neutral décor as well as offering spacious accommodation with ample storage making the perfect home for any couples or working professionals looking to be located in the popular location of Hyson Green within close proximity to a range of shops, eateries and reliable transport links. Internally there is a hallway/study area, an open plan fitted kitchen/living area, two good sized bedrooms being serviced by a modern three piece bathroom suite. Outside there is availability for on street parking.

MUST BE VIEWED!





- Second Floor Apartment
- Two Bedroom
- Open Plan Fitted Kitchen/Living Area
- Modern Three Piece Bathroom Suite
- Popular Location
- On-Street Parking Available
- 360 Virtual Tour Available
- Un-Furnished
- Available Now





ACCOMMODATION

Hall/Study Area

8'9" x 18'2" (2.67m x 5.54m)

The entrance hall has carpeted flooring, a telecom, wall mounted heater and a single door providing access into the accommodation

Kitchen/ Living Room

17'7" x 18'10" (5.37m x 5.75m)

The kitchen has wood effect flooring, has a range of fitted wall and base units with wood effect worksurfaces, a stainless steel sink with a drainer and mixer taps, integrated oven with electric hobs, stainless steel splashback and an extractor fan, extractor fan, space and plumbing for a washing machine and other appliances with a UPVC double glazed Velux window. The Living area has carpeted flooring, two wall mounted electric heaters, TV point, smoke alarm, loft hatch and a UPVC double glazed Velux window

Master Bedroom

9'9" x 11'2" (2.98m x 3.41m)

The main bedroom has carpeted flooring, an electric wall mounted heater and a UPVC double glazed Velux window

Bedroom Two

10'0" x 10'5" (3.07m x 3.18m)

The second bedroom has carpeted flooring and a UPVC double glazed window Velux window

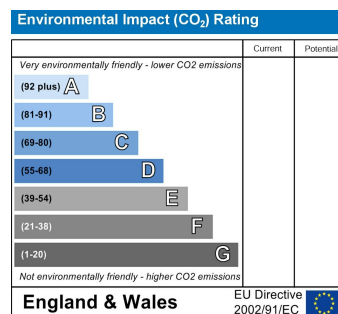
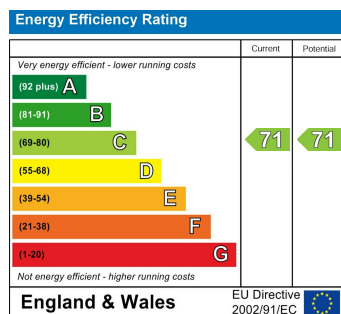
Bathroom

10'1" x 5'9" (3.08m x 1.77m)

The bathroom has tile effect flooring, partially tiled walls, a wall mounted towel rail, low level WC, washbasin unit with mixer taps, a corner shower enclosure with a wall mounted electric shower, shaving point and an extractor fan

OUTSIDE

Outside to the front of the property there is availability for on street parking



Holland Street, Hyson Green, Nottinghamshire, NG7 5DS

HoldenCopley
PREPARE TO BE MOVED



FLOORPLAN IS FOR ILLUSTRATIVE PURPOSES ONLY

All measurements walls, doors, windows, fittings and appliances, their sizes and locations are an approximate only. They cannot be regarded as being a representation by the seller nor their agent and is for identification only. Not to scale.
© HoldenCopley

01158228800

4 Croft Road, Arnold, Nottingham, NG5 7DX

lettings@holdencopley.co.uk

www.holdencopley.co.uk

Agents Disclaimer: HoldenCopley, their clients and employees I: Are not authorised to make or give any representations or warranties in relation to the property either here or elsewhere, either on their own behalf or on behalf of their client or otherwise. They assume no responsibility for any statement that may be made in these particulars. These particulars do not form part of any offer or contract and must not be relied upon as statements or representations of fact. 2: Any areas, measurements or distances are approximate. The text, photographs and plans are for guidance only and are not necessarily comprehensive. It should not be assumed that the property has all necessary planning, building regulation or other consents and HoldenCopley have not tested any services, equipment or facilities. Purchasers must make further investigations and inspections before entering into any agreement.