

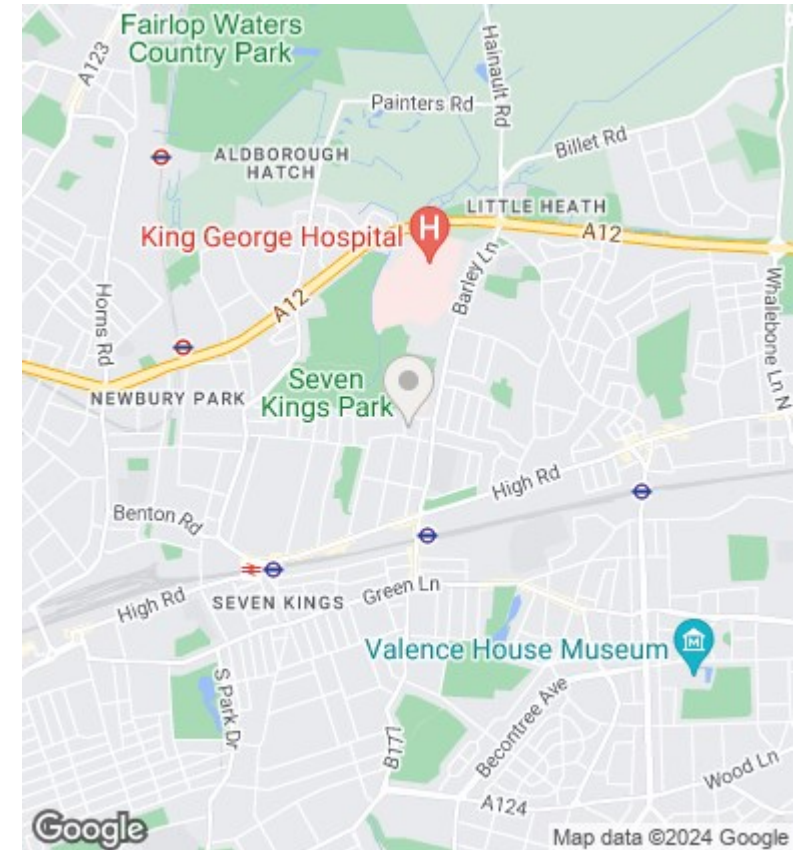
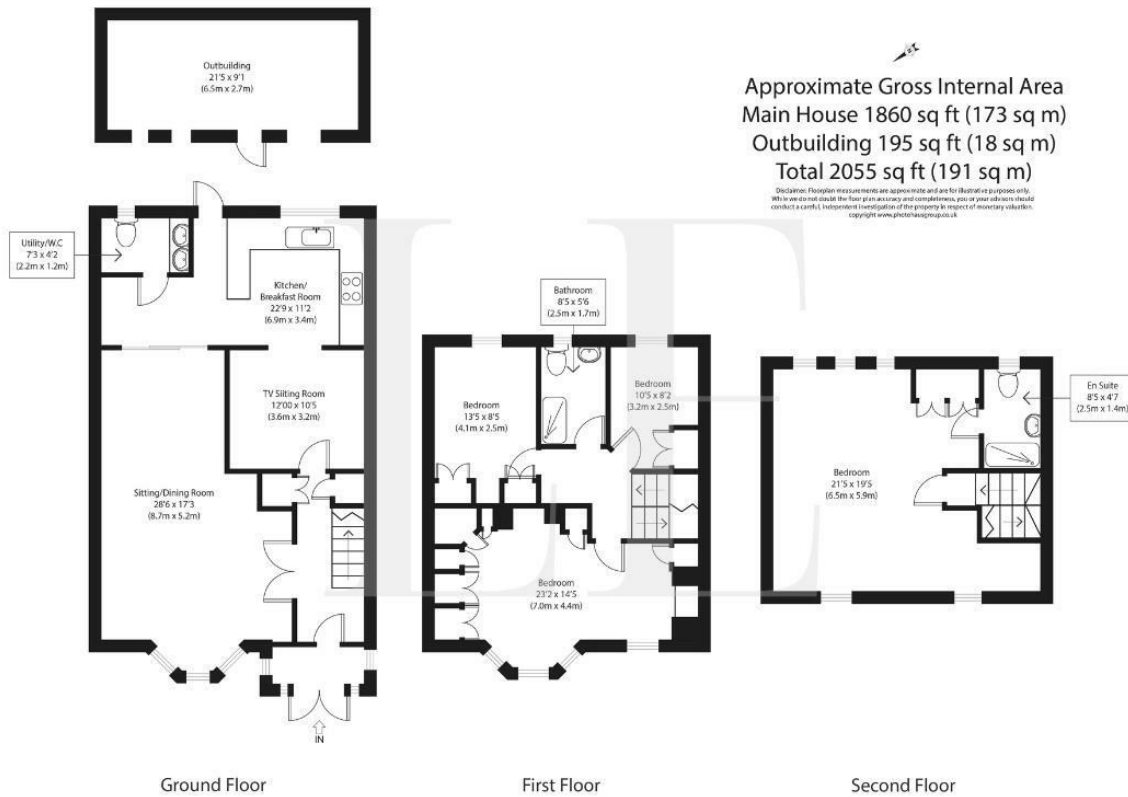
LILYANA

ESTATES



Douglas Road, Ilford

Offers in excess of £700,000



Summary

Lilyana Estates are proud to present this stunning terraced house in a prime location waiting to be discovered. Boasting 2 reception rooms, 4 bedrooms, and 3 bathrooms spread across 2,110 sq ft, this property offers a high specification living experience that is sure to impress!!

Upon entering, you are greeted by a stunning interior that exudes elegance and sophistication. The well-thought-out living arrangements include 4 spacious double bedrooms, a lounge diner, a separate kitchen with a breakfast area, and a convenient utility space. The 3 modern and high-spec bathrooms add a touch of luxury to everyday living.

Spread over 3 floors, this property offers privacy and tranquility, with the 4th bedroom located on its private floor complete with a large en-suite bathroom. Parking is made easy with space for 1 vehicle and security bollards, while the large private garden and outhouse, finished to the same spec,

Viewings

Viewings by arrangement only.
 Call 02035 381156 to make an appointment.

Council Tax Band
 D

EPC Rating:
 C

Energy Efficiency Rating		
	Current	Potential
Very energy efficient - lower running costs		
(92 plus) A		
(81-91) B		82
(69-80) C	70	
(55-68) D		
(39-54) E		
(21-38) F		
(1-20) G		
Not energy efficient - higher running costs		
England & Wales	EU Directive 2002/91/EC	