



# ASPIRE RESIDENTIAL

Service | Expertise | Accountability



## The Glen, Worthing, BN13 2AB

Asking Price £695,000

Set in a quiet, secluded location at the end of a winding private driveway, this impressive detached family home was built in the 1920s. The property boasts a wealth of charming, characterful features and offers incredible potential for further improvement and development. While the home would benefit from some modernisation, it is move-in ready, allowing any updates to be carried out over time. Externally, the beautifully landscaped gardens are surrounded by mature trees, shrubs, and well-stocked borders. Parking is provided by a spacious driveway and a single garage.



Council Tax Band: E

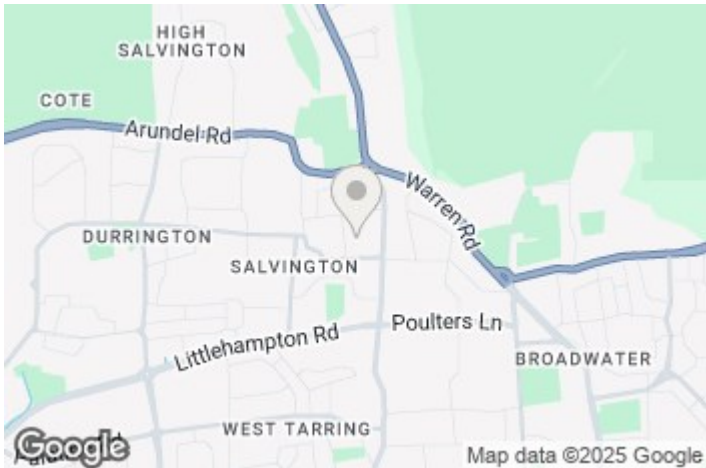


- Three, Four or Five Bedroom Detached Home
- Accommodation arrange over two floors
- Parking provided by a driveway and single garage
- Catchment area for popular local schools
- Easy access to transport links including A24/27 as well as mainline train stations
- Incredible potential for improvement and expansion
- Situated on a good size plot with beautiful gardens
- Secluded location at the end of a winding driveway
- Convenient for shops, restaurants and amenities
- Well proportioned accommodation extending to approx. 2051 sq ft in size





Worthing, a picturesque seaside town on the south coast of England, exudes a unique charm with its blend of Victorian elegance and contemporary vitality. Known for its extensive pebble beach, historic pier, and well-maintained promenade, Worthing offers residents and visitors alike a captivating coastal experience. The town's vibrant cultural scene is enriched by theatres, art galleries, and frequent events, creating a lively atmosphere. With its beautiful parks, such as Beach House Park and Highdown Gardens, Worthing provides green spaces for leisure and relaxation. The town's bustling town centre features a diverse array of shops, restaurants, and entertainment venues, contributing to its reputation as a welcoming and thriving community. Worthing's accessibility, rich history, and scenic beauty make it a sought-after destination for those seeking a coastal haven with a perfect blend of tradition and modernity.



EPC Rating:  
D

Energy Efficiency Rating		
	Current	Potential
Very energy efficient - lower running costs		
(92 plus) A		
(81-91) B		
(69-80) C		
(55-68) D	63	73
(39-54) E		
(21-38) F		
(1-20) G		
Not energy efficient - higher running costs		
England & Wales		
EU Directive 2002/91/EC		



## The Glen, Worthing, BN13

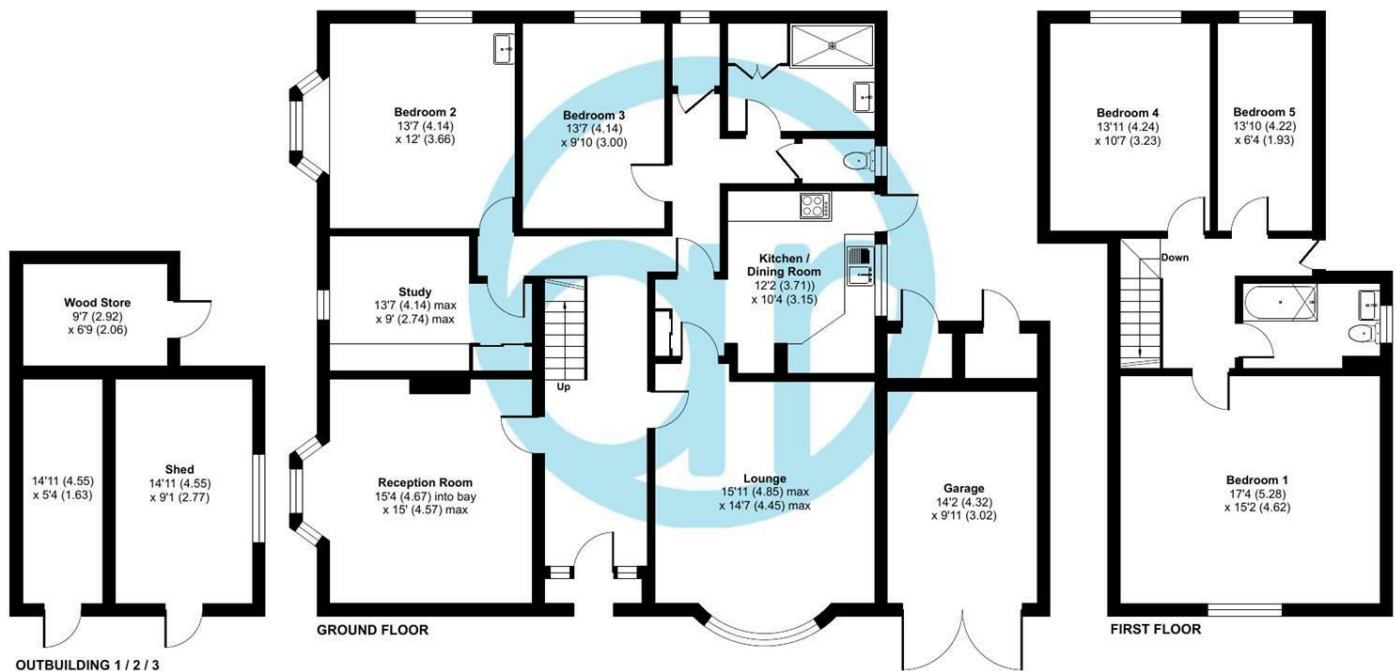
Approximate Area = 2073 sq ft / 192.5 sq m

Garage = 142 sq ft / 13.1 sq m

Outbuilding = 312 sq ft / 28.9 sq m

Total = 2527 sq ft / 234.5 sq m

For identification only - Not to scale



Floor plan produced in accordance with RICS Property Measurement Standards incorporating International Property Measurement Standards (IPMS2 Residential). © nitchecom 2024. Produced for Aspire Residential Real Estate. REF: 1181858

### Aspire Residential | Goring-by-Sea

28 Goring Road  
Goring-by-Sea  
Worthing  
BN12 4AD  
Telephone: 01903 259 961  
Email: [info@aspireresidential.co.uk](mailto:info@aspireresidential.co.uk)



### Aspire Residential | Durrington / Salvington

5 Selden Parade  
Salvington Road  
Worthing  
BN13 2HL  
Telephone: 01903 910 424  
Email: [enquiries@aspireresidential.co.uk](mailto:enquiries@aspireresidential.co.uk)

Aspire Residential and Aspire Residential Estate Agents are trading names of Aspire Residential Sales Limited, a Company registered in England and Wales with registration number 11659289. VAT No. 317450614

**IMPORTANT NOTICE TO PURCHASERS:** We endeavour to make our sales particulars accurate and reliable, however, they do not constitute or form part of an offer or any contract and none is to be relied upon as statements of representation or fact. The services, systems and appliances listed in this specification have not been tested by us and no guarantees as to their operating ability or efficiency are given. All measurements have been taken as a guide to prospective buyers only, and are not precise. If you require clarification or further information on any points, please contact us, especially if you are traveling some distance to view.