



Lanfranc Road, Worthing, BN14 7ER

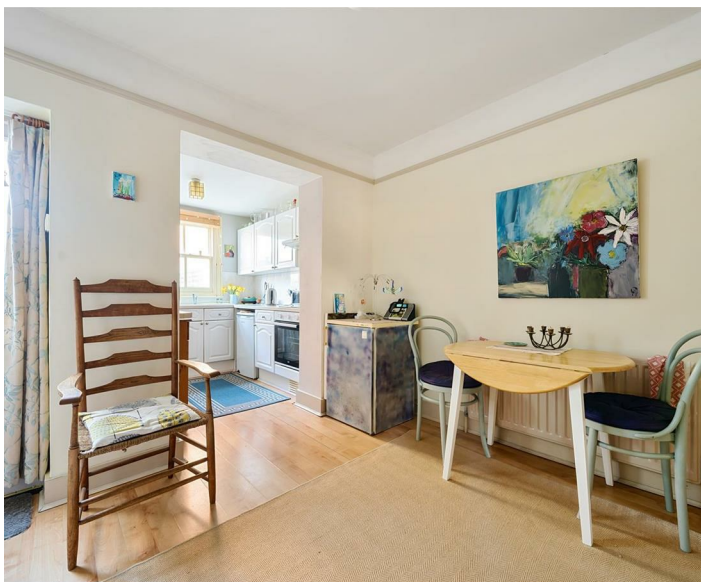
Asking Price £325,000

Aspire Residential are delighted to announce the sale of this most charming two bedroom terrace home, situated only moments from local shops and amenities as well as West Worthing mainline train station which is approx. 0.4 miles away. The accommodation has been well presented throughout and comprises two reception rooms and an open plan kitchen. There are two good size bedrooms and a family bathroom on the first floor. Externally, there is a delightful low maintenance courtyard garden to the rear, ideally for BBQ's and al fresco dining during the summer months.



Council Tax Band: B

- A charming two bedroom terrace home
- Well presented accommodation
- West Worthing train station approx. 0.4 miles away
- The property had a new roof installed in Nov' 2022
- Private courtyard garden to the rear
- Convenient location for local shops and amenities
- Catchment area for popular local schools



Tarring, a historic and quaint neighbourhood in Worthing, captivates residents with its charming blend of period architecture and a warm community atmosphere. With its cobbled streets and historic buildings, Tarring exudes a sense of timeless character. The area features a mix of traditional cottages, Victorian houses, and modern residences, creating a diverse yet cohesive streetscape. Tarring boasts a thriving local community with independent shops, cafes, and cultural venues. Residents can also enjoy the nearby Tarring Park, contributing to the areas appeal as a delightful residential enclave that seamlessly blends history with contemporary living.



EPC Rating:

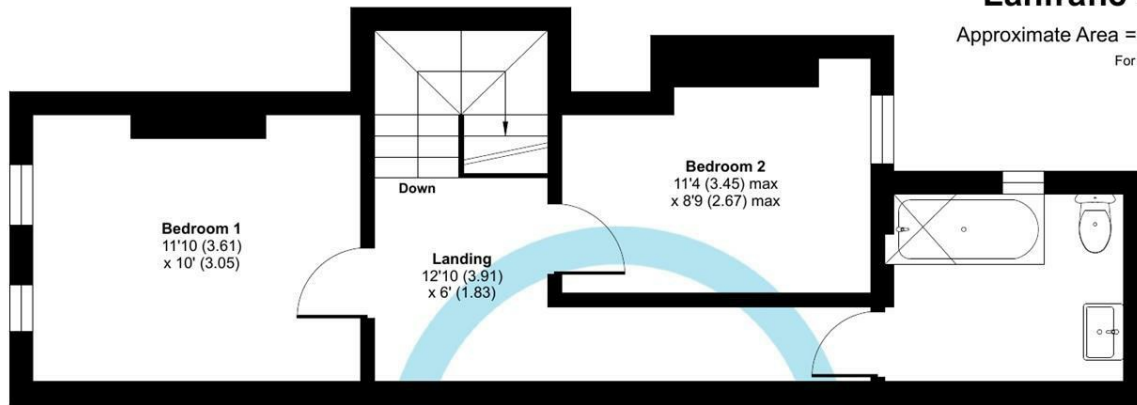
D

Energy Efficiency Rating		Current	Potential
Very energy efficient - lower running costs			
(92 plus) A			
(81-91) B			86
(69-80) C			
(55-68) D		66	
(39-54) E			
(21-38) F			
(1-20) G			
Not energy efficient - higher running costs			
England & Wales		EU Directive 2002/91/EC	

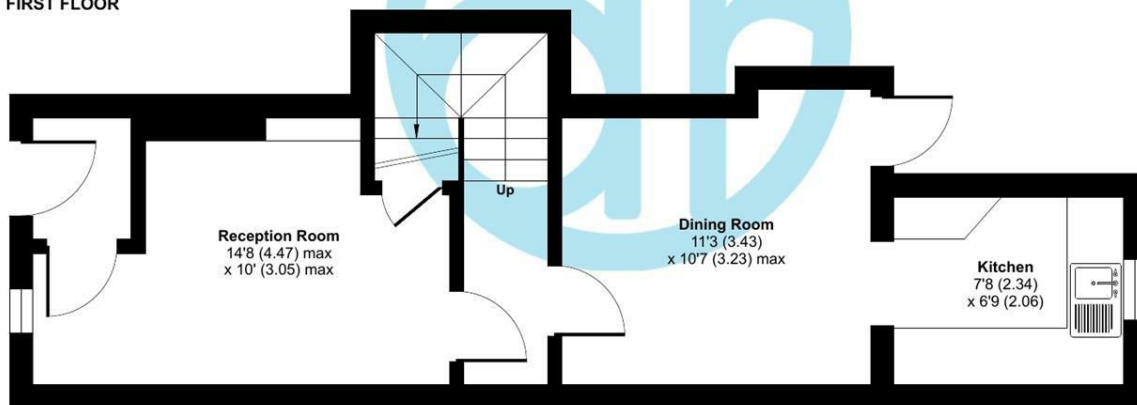
## Lanfranc Road, BN14

Approximate Area = 742 sq ft / 68.9 sq m

For identification only - Not to scale



FIRST FLOOR



GROUND FLOOR



Floor plan produced in accordance with RICS Property Measurement Standards incorporating International Property Measurement Standards (IPMS2 Residential). © nichecom 2024. Produced for Aspire Residential Real Estate. REF: 1080184

### Aspire Residential | Goring-by-Sea

28 Goring Road  
Goring-by-Sea  
Worthing  
BN12 4AD  
Telephone: 01903 259 961  
Email: [info@aspireresidential.co.uk](mailto:info@aspireresidential.co.uk)



### Aspire Residential | Durrington / Salvington

5 Selden Parade  
Salvington Road  
Worthing  
BN13 2HL  
Telephone: 01903 910 424  
Email: [enquiries@aspireresidential.co.uk](mailto:enquiries@aspireresidential.co.uk)

Aspire Residential and Aspire Residential Estate Agents are trading names of Aspire Residential Sales Limited, a Company registered in England and Wales with registration number 11659289. VAT No. 317450614

**IMPORTANT NOTICE TO PURCHASERS:** We endeavour to make our sales particulars accurate and reliable, however, they do not constitute or form part of an offer or any contract and none is to be relied upon as statements of representation or fact. The services, systems and appliances listed in this specification have not been tested by us and no guarantees as to their operating ability or efficiency are given. All measurements have been taken as a guide to prospective buyers only, and are not precise. If you require clarification or further information on any points, please contact us, especially if you are traveling some distance to view.