



Ontario Close, Worthing, BN13 2TE

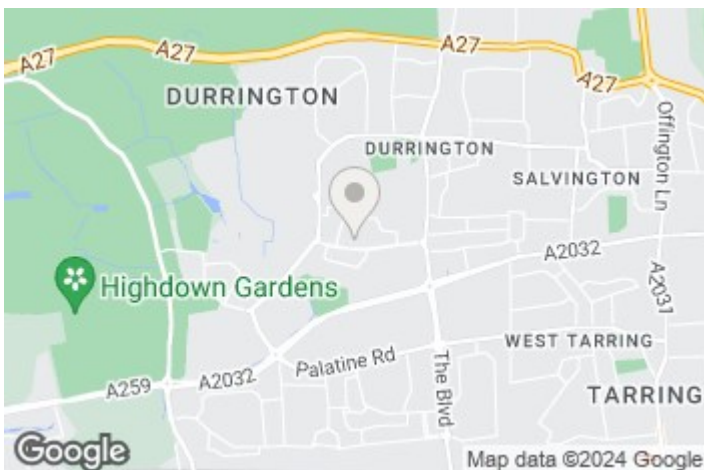
Offers Over £300,000

Situated in a popular and convenient location is this modern and stylish three bedroom mid terrace property. The current owner has a keen attention to details and has maintained the property to a high standard as well as carrying out upgrades throughout. Externally there is a good size private garden as well as a single garage set in a nearby block. This property must be viewed to fully appreciate what is on offer.

- Three bedroom mid terrace
- Good size private garden to the rear
- Single garage in a nearby block
- Access to transport links including bus routes and the A27
- Catchment area for popular and sought after schools
- Presented to a high standard throughout
- Open plan kitchen / dining room
- Accommodation of approx. 797 sq. ft in size
- Convenient location for local shops and amenities
- Insulated & boarded loft space



Worthing, a picturesque seaside town on the south coast of England, exudes a unique charm with its blend of Victorian elegance and contemporary vitality. Known for its extensive pebble beach, historic pier, and well-maintained promenade, Worthing offers residents and visitors alike a captivating coastal experience. The town's vibrant cultural scene is enriched by theatres, art galleries, and frequent events, creating a lively atmosphere. With its beautiful parks, such as Beach House Park and Highdown Gardens, Worthing provides green spaces for leisure and relaxation. The town's bustling town centre features a diverse array of shops, restaurants, and entertainment venues, contributing to its reputation as a welcoming and thriving community. Worthing's accessibility, rich history, and scenic beauty make it a sought-after destination for those seeking a coastal haven with a perfect blend of tradition and modernity.



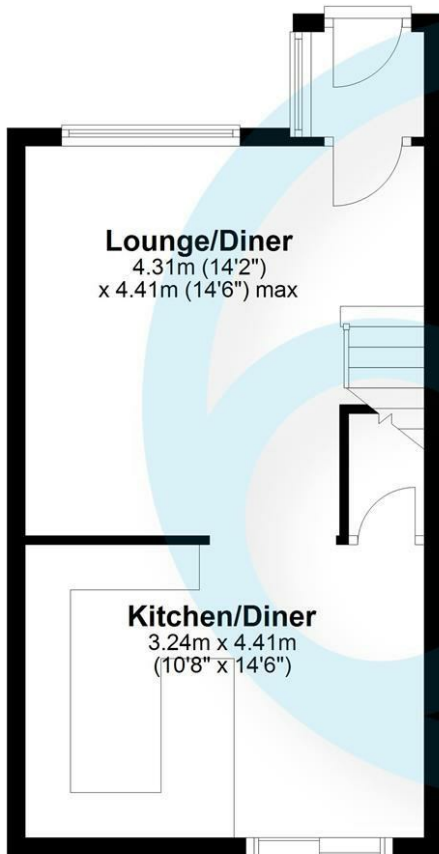
EPC Rating:

C

Energy Efficiency Rating		Current	Potential
Very energy efficient - lower running costs			
(92 plus) A			87
(81-91) B			
(69-80) C		70	
(55-68) D			
(39-54) E			
(21-38) F			
(1-20) G			
Not energy efficient - higher running costs			
England & Wales		EU Directive 2002/91/EC	

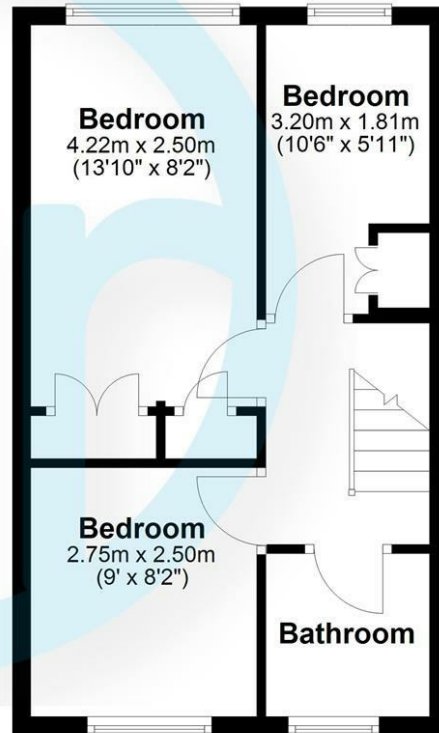
Ground Floor

Approx. 35.3 sq. metres (380.3 sq. feet)



First Floor

Approx. 33.8 sq. metres (363.3 sq. feet)



Total area: approx. 69.1 sq. metres (743.6 sq. feet)

Aspire Residential | Goring-by-Sea

28 Goring Road
Goring-by-Sea
Worthing
BN12 4AD
Telephone: 01903 259 961
Email: info@aspireresidential.co.uk



Aspire Residential | Durrington / Salvington

5 Selden Parade
Salvington Road
Worthing
BN13 2HL
Telephone: 01903 910 424
Email: enquiries@aspireresidential.co.uk

Aspire Residential and Aspire Residential Estate Agents are trading names of Aspire Residential Sales Limited, a Company registered in England and Wales with registration number 11659289. VAT No. 317450614

IMPORTANT NOTICE TO PURCHASERS: We endeavour to make our sales particulars accurate and reliable, however, they do not constitute or form part of an offer or any contract and none is to be relied upon as statements of representation or fact. The services, systems and appliances listed in this specification have not been tested by us and no guarantees as to their operating ability or efficiency are given. All measurements have been taken as a guide to prospective buyers only, and are not precise. If you require clarification or further information on any points, please contact us, especially if you are traveling some distance to view.