



Flat 23, 2, St. Johns Chambers Ashwell Street , Leicester, LE1 6JJ £200,000

Exceptional Two Bedroom Penthouse-Style Duplex in a Grade II Listed Church Conversion – City Centre, Leicester

We are delighted to present this truly unique and characterful two-bedroom duplex apartment, set within a beautifully converted Grade II Listed church, peacefully located in a quiet pocket of Leicester city centre.

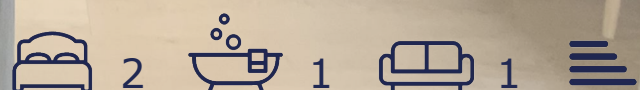
This remarkable home offers a rare blend of historical grandeur and contemporary living, just a short walk from Leicester Train Station – perfect for professionals and commuters.

Key Features:

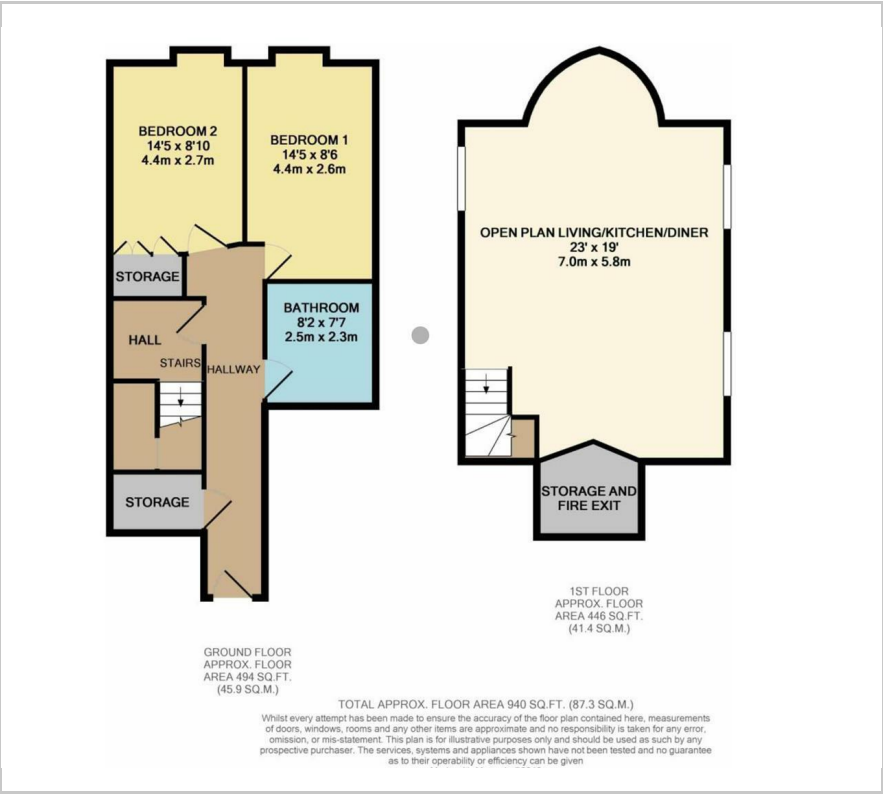
- Two spacious double bedrooms
- Set across two floors within a landmark building
- Stunning open-plan living/dining/kitchen space
- Striking original features throughout including vaulted ceilings (up to 18ft), exposed oak beams, ornate cornicing, and a magnificent stained-glass window
- Landscaped communal gardens

Viewing

Please contact our Berkley Kibworth Office on 0116 2796161 if you wish to arrange a viewing appointment for this property or require further information.



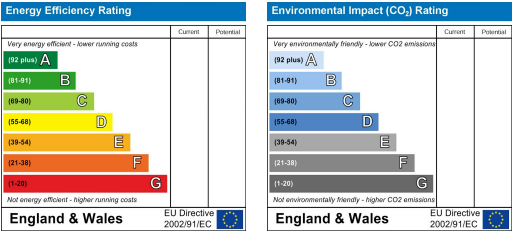
Floor Plan



Area Map



Energy Efficiency Graph



These particulars, whilst believed to be accurate are set out as a general outline only for guidance and do not constitute any part of an offer or contract. Intending purchasers should not rely on them as statements of representation of fact, but must satisfy themselves by inspection or otherwise as to their accuracy. No person in this firms employment has the authority to make or give any representation or warranty in respect of the property.