



49 Long Meadow Way , Birstall, LE4 3NU £325,000

Constructed in 2015 by Messrs Jelson, an immaculately presented three bedroom semi-detached family home positioned very well for access to major M and A roads as well as links to the City Centre of Leicester. This lovely home in brief benefits from an Entrance Hall, WC, Living Room, Kitchen, First Floor Landing, Three Bedrooms and a Bathroom. There is off road parking alongside the property and a well maintained and presented garden to the rear.

Entrance Hall - There are stairs that lead to the first floor landing, radiator, power point and doors to:

Wc - Comprising a low level WC, Wash hand basin, Radiator and a Window to the front aspect.

Living Room - 4.85m x 3.68m (15'11" x 12'1") - Benefiting from a window to the rear aspect, radiator, power points, TV point, under stairs cupboard and patio doors to the rear garden.

Kitchen - 3.76m x 2.67m (12'4" x 8'9") - There are a range of wall and base units with work surfaces, sink with a mixer tap, integral oven, hob with extractor, power points, radiator and a Window to the front aspect.

Viewing

Please contact our Berkley Kibworth Office on 0116 2796161 if you wish to arrange a viewing appointment for this property or require further information.



3



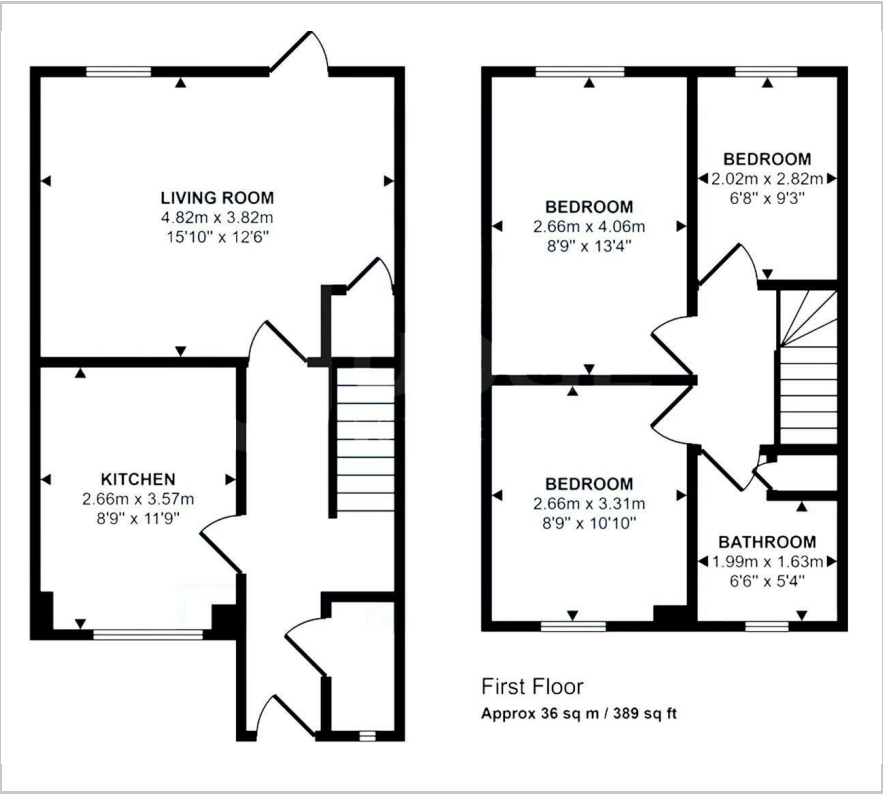
1



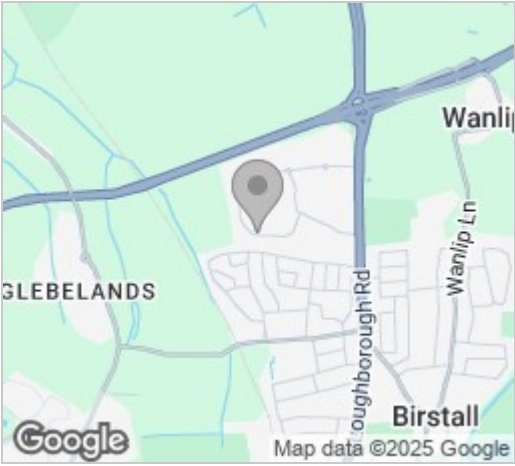
1



Floor Plan



Area Map



Energy Efficiency Graph



These particulars, whilst believed to be accurate are set out as a general outline only for guidance and do not constitute any part of an offer or contract. Intending purchasers should not rely on them as statements of representation of fact, but must satisfy themselves by inspection or otherwise as to their accuracy. No person in this firms employment has the authority to make or give any representation or warranty in respect of the property.