



69 Windrush Drive

Oadby, Leicester, LE2 4GJ

£375,000

A Fantastic Family Home in the Heart of Oadby

Nestled in one of Leicester's most sought-after suburbs, this well-presented four-bedroom semi-detached home offers an ideal setting for family life. With excellent schools, superb local amenities, and strong transport links, this property is perfectly positioned for those seeking both convenience and community.

To the front, the property benefits from off-road parking and a garage, while inside, a spacious and well-designed layout ensures ample room for growing families. The entrance porch leads into a welcoming living room, featuring a charming exposed brick fireplace, creating a cosy yet stylish focal point.

The modern kitchen/breakfast room is fitted with a range of wall and base units, integrated appliances, and French doors that open directly onto the rear garden—perfect for indoor-outdoor living. Adjacent, a separate utility room provides additional storage and laundry space, with access to a convenient ground-floor cloakroom. Completing the ground floor is a versatile dining room, ideal for formal meals, home working, or a playroom.

Viewing

Please contact our Berkley Kibworth Office on 0116 2796161 if you wish to arrange a viewing appointment for this property or require further information.



4



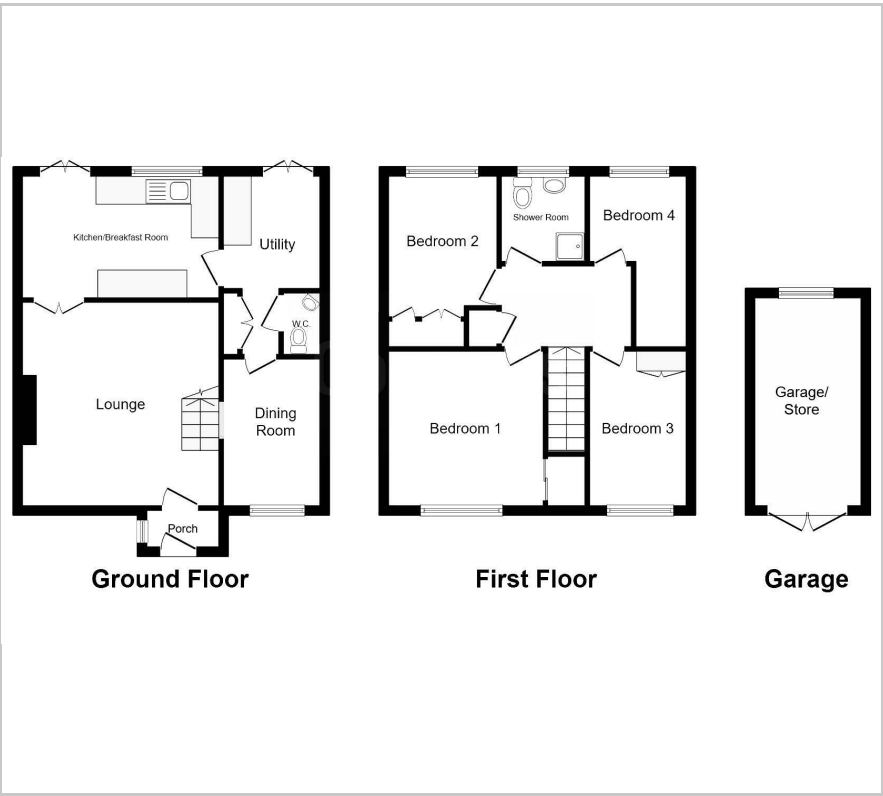
1



2



Floor Plan



Area Map



Energy Efficiency Graph



These particulars, whilst believed to be accurate are set out as a general outline only for guidance and do not constitute any part of an offer or contract. Intending purchasers should not rely on them as statements of representation of fact, but must satisfy themselves by inspection or otherwise as to their accuracy. No person in this firms employment has the authority to make or give any representation or warranty in respect of the property.