



46 Parkdale

, Ibstock, LE67 6JW
Price Guide £275,000

*** GUIDE PRICE - £275,000-£280,000 ***

Nestled in the heart of the ever-popular village of Ibstock, this impressive two-bedroom semi-detached home offers a perfect blend of modern living and versatile spaces. Originally built as a three-bedroom home, this property has been thoughtfully reconfigured to provide a generous master bedroom, now one of two spacious double bedrooms located on the first floor. Complementing the bedrooms is a stylish, contemporary shower room, ideal for modern family living.

Upon entering, you're greeted by a welcoming porch leading into a cosy yet spacious living room, complete with a charming alcove that currently serves as a practical office space. The real star of the ground floor is the beautifully designed rear extension, featuring an open-plan living/kitchen/dining area. This light-filled space is finished to an impeccable standard, boasting built-in appliances, sleek quartz worktops, and stunning bi-fold doors that open onto a low-maintenance rear garden—perfect for entertaining or simply enjoying a peaceful moment.

Further enhancing this property is the converted garage, which now serves as a handy utility

Viewing

Please contact our Berkley Kibworth Office on 0116 2796161 if you wish to arrange a viewing appointment for this property or require further information.

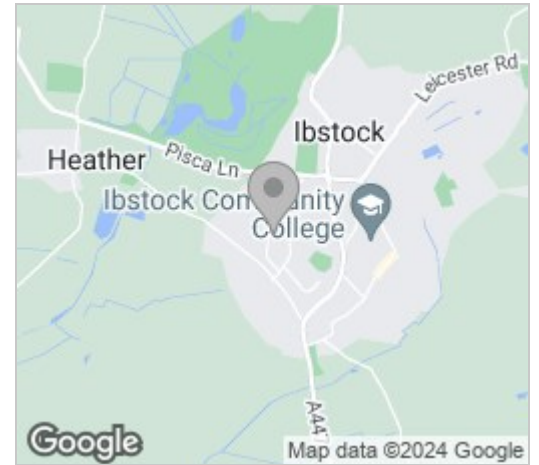


2 1 1

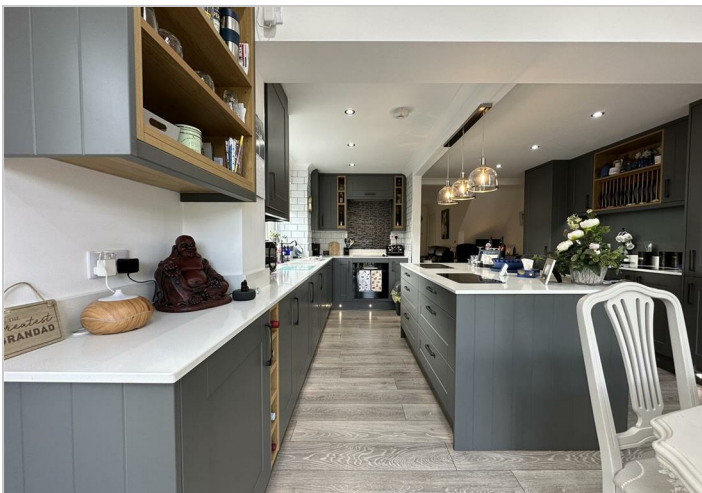
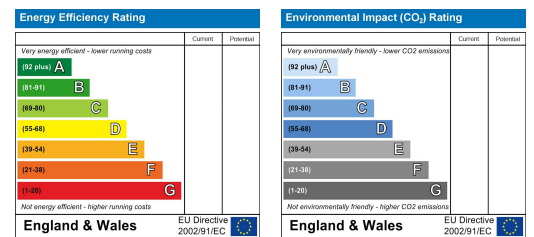
Floor Plan



Area Map



Energy Efficiency Graph



These particulars, whilst believed to be accurate are set out as a general outline only for guidance and do not constitute any part of an offer or contract. Intending purchasers should not rely on them as statements of representation of fact, but must satisfy themselves by inspection or otherwise as to their accuracy. No person in this firm's employment has the authority to make or give any representation or warranty in respect of the property.