



Bower Lane | | Maidstone | ME16 8BJ

£180,000



Key features

- 1 Bedroom House
- Open plan kitchen/lounge on ground floor
- Walking distance to town centre and train stations
- Bedroom with ensuite shower room on the first floor
- Offered for sale with no onward chain

Description

Louis and Co are delighted to offer this one bedroom house which is conveniently located on a quiet side street within walking distance to Maidstone town centre and train stations.

Directions



Louis and Co are delighted to offer this one bedroom house which is conveniently located on a quiet side street within walking distance to Maidstone town centre and train stations.

This property comprises

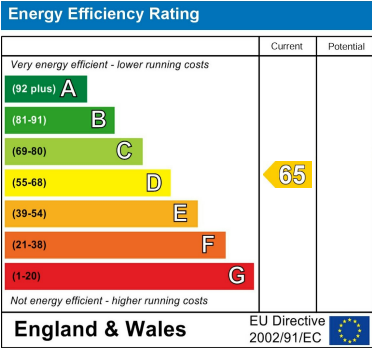
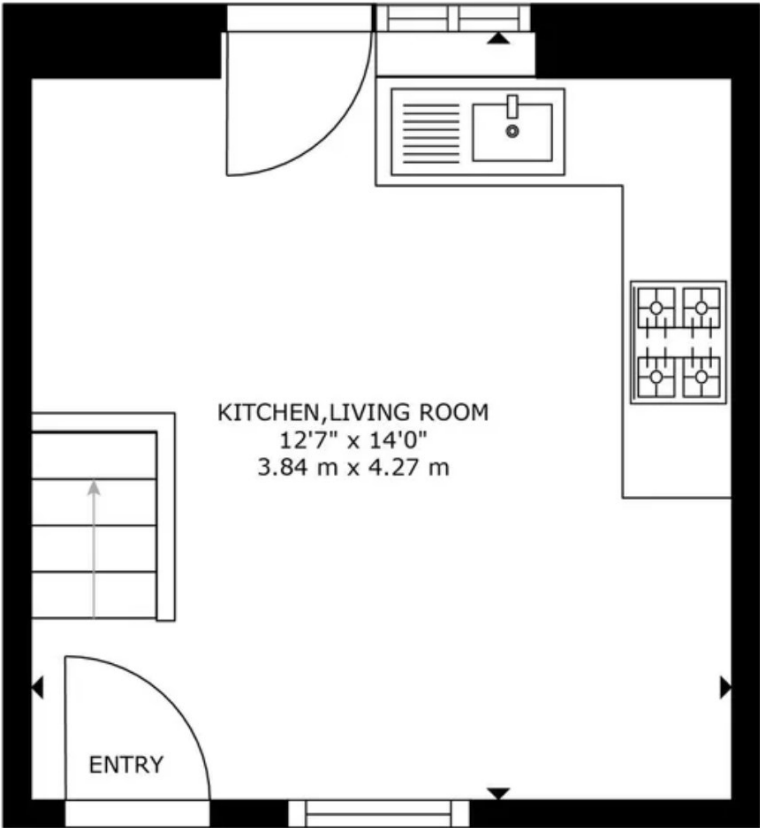
ground floor: Open plan lounge kitchen with fitted kitchen with wall and floor mounted cupboards with sink, built in oven, hob and extractor hood, housing and plumbing for a washing machine, front and back doors, stairs to first floor, laminate floor

first floor: Main bedroom space (there is no landing so the space is open from the stairwell) with carpeted floor and shower room with white sanitary suite with shower cubicle

The property is offered with no onward chain.

EPC Rating: D

Floor plans



Council Tax Band B EPC Rating D



68 South Hill Avenue
Harrow
HA2 0NH
02081501988
sales@leafyestates.co.uk
leafyestates.co.uk