



*Octavia Mews, London, W9 3LQ*  
*£999,000 Freehold*



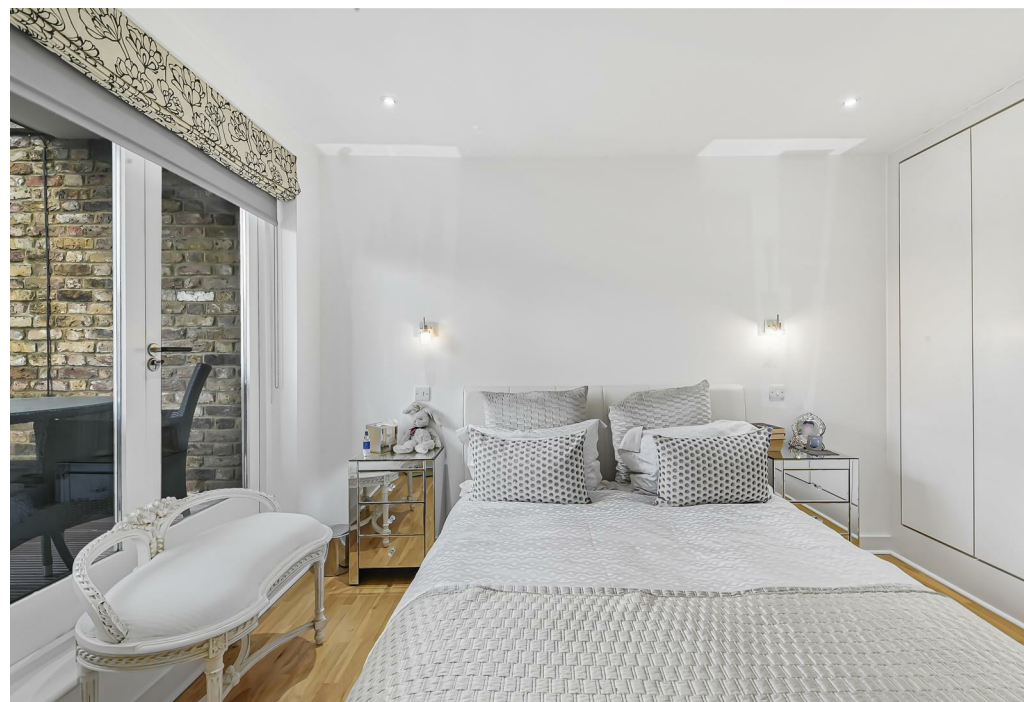
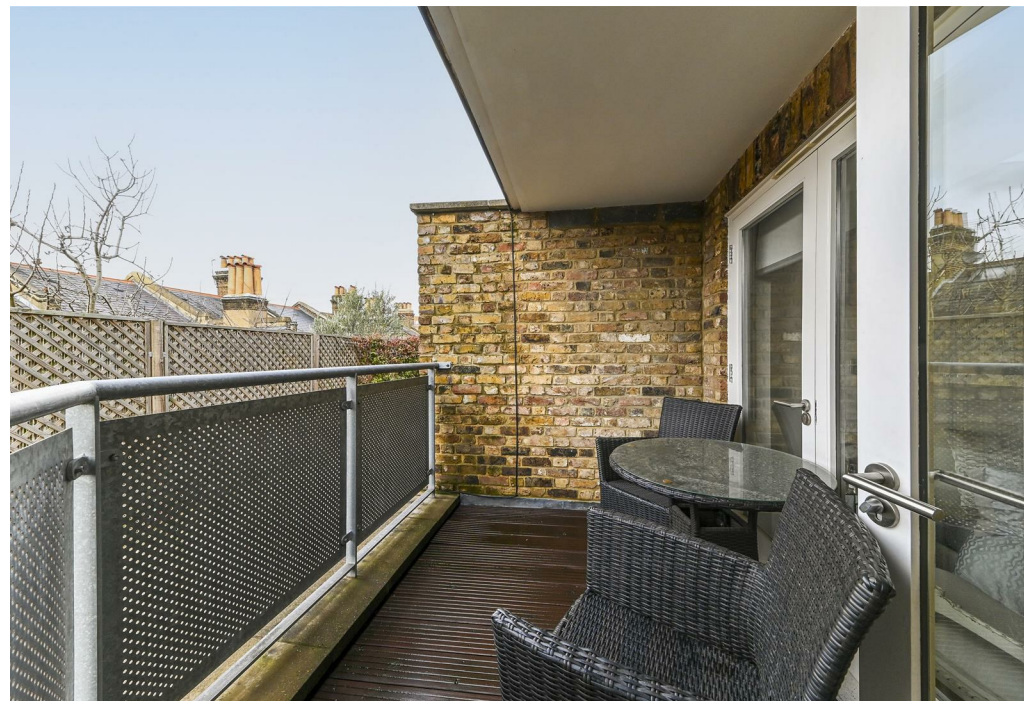






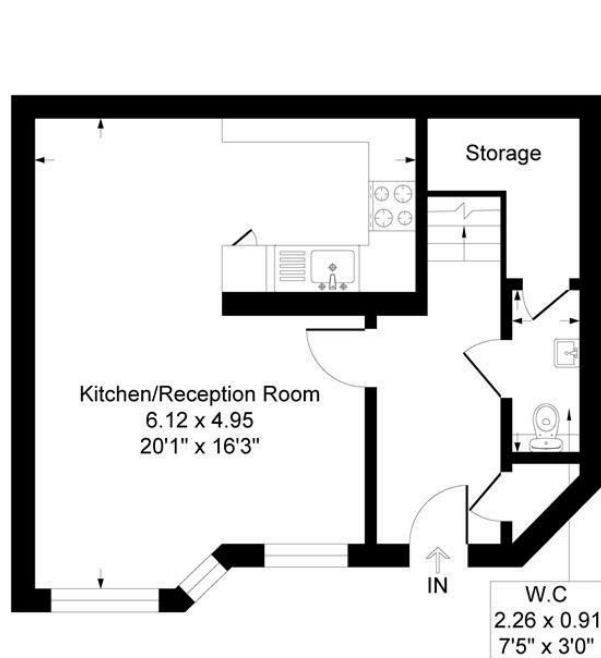
3 x  2 x  1 x 

A three bedroom freehold mews house, situated on Octavia Mews measuring an impressive 1139sq ft and is arranged over three floors, with the ground floor comprising a reception and semi open plan kitchen, great for entertaining, also with guest cloakroom, and bespoke wood flooring throughout . The first floor with a generous sized double bedroom and terrace leading from it, contemporary ensuite, family bathroom and second smaller bedroom. The final bedroom on the top floor occupying the whole of the top floor with ensuite shower room, all flooded with natural light. Benefits include off street demised parking within the mews and security gates. Freehold. Ideally located within a ten minute walk to Queens Park tube and the shops and restaurants of Salusbury road, and ten minutes walk to Westbourne park tube.

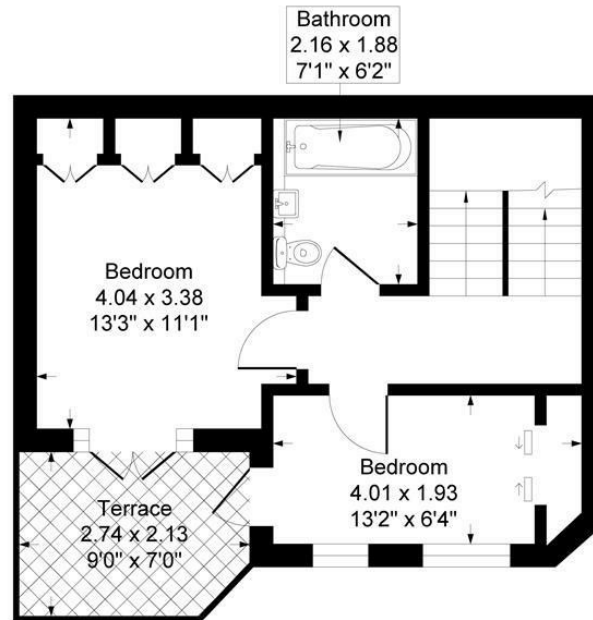


# Octavia Mews, Bravington Road, W9

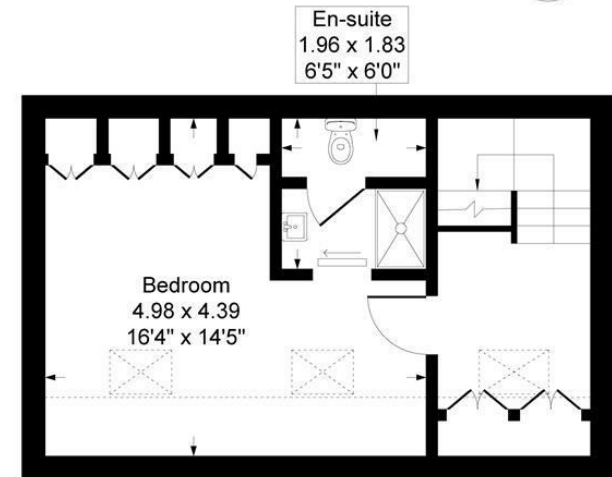
Approximate Gross Internal Floor Area = 105.7 sq m / 1139 sq ft



Ground Floor



First Floor



Second Floor

Illustration for identification purposes only, measurements are approximate, not to scale.

**Important Notice** Debussy Property Service Ltd trading as Braithwait for themselves and for the vendor of this property whose agents they are, give notice that (i) these particulars do not constitute any part of an offer or contract, (ii) all statements contained within these particulars are made without responsibility on the part of Braithwait or the vendor, (iii) whilst none in good faith, none of the statements contained within these particulars are to be relied upon as a statement of representation or fact, (iv) any intending purchaser must satisfy him/herself by inspection or otherwise as to the correctness of each of the statements contained within these particulars, (v) the vendor does not make or give either Braithwait or any person within their employment any authority to make or give any representation or warranty whatsoever in relation to this property. Wide angled lenses may be used in photographs.

Call us on 0207 289 8889 or email [sales@braithwait.co.uk](mailto:sales@braithwait.co.uk)

