



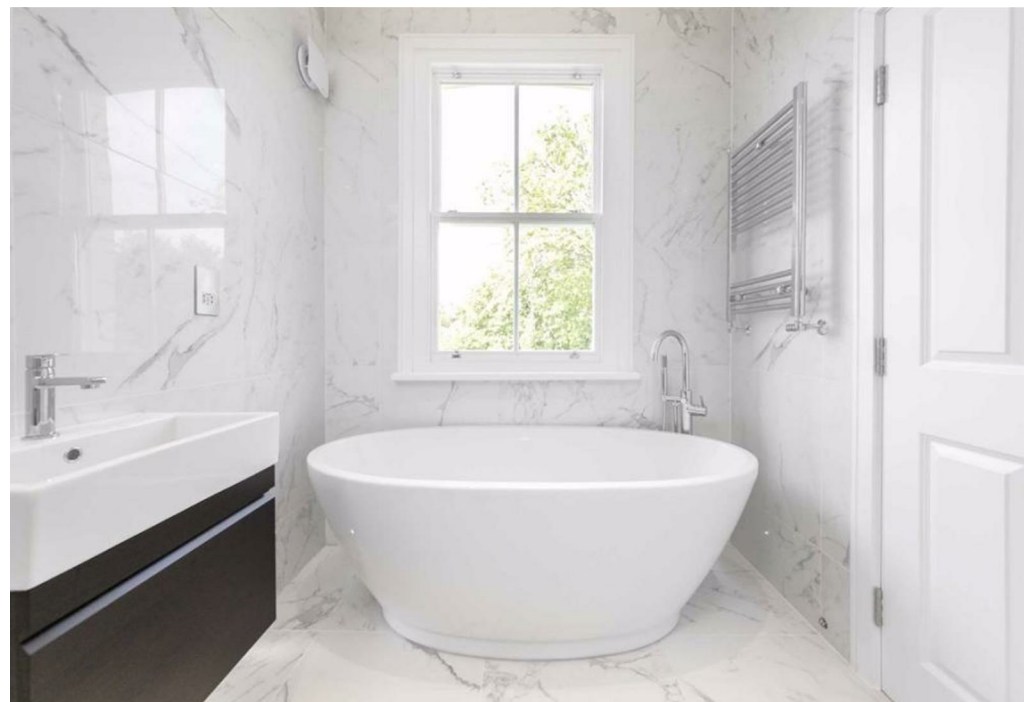
*Randolph Avenue, London, W9 1DL*  
*Asking Price £1,025,000 Leasehold*



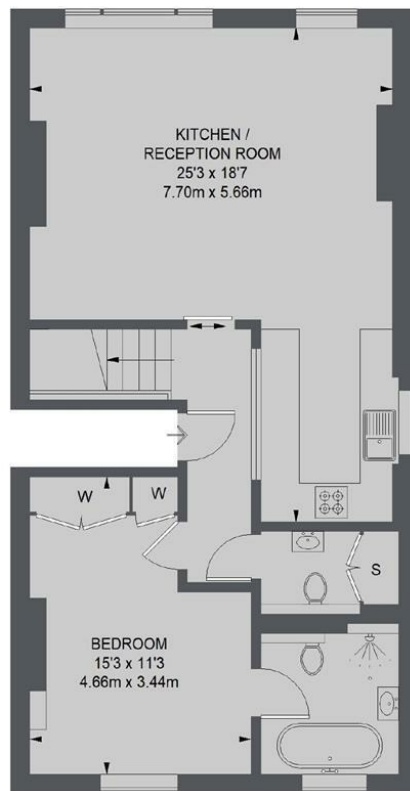


**3 x**  **3 x**  **1 x** 

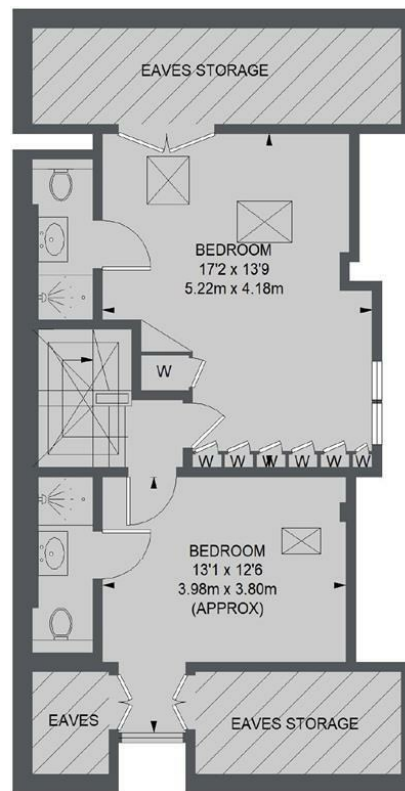
An immaculately presented three bedroom maisonette, measuring 1338sq ft, and situated on the top two floors of a stucco building on Randolph Avenue with the advantage of three ensuite bathrooms. The bright 25.3 ft reception leads through to a semi open plan kitchen and master bedroom, with additional guest bathroom on the second floor, whilst the third floor has another two good sized bedrooms and plenty of storage in the eaves. Benefits include the flats high spec finish, proximity to Maida Vale tube and the picturesque canals of Little Venice. Leasehold.







SECOND FLOOR



THIRD FLOOR

TOTAL APPROX. FLOOR AREA (EXCLUDING EAVES STORAGE) 1144 SQ. FT. (106.32 SQ. M.)

**Important Notice** Debussy Property Service Ltd trading as Braithwait for themselves and for the vendor of this property whose agents they are, give notice that (i) these particulars do not constitute any part of an offer or contract, (ii) all statements contained within these particulars are made without responsibility on the part of Braithwait or the vendor, (iii) whilst none in good faith, none of the statements contained within these particulars are to be relied upon as a statement of representation or fact, (iv) any intending purchaser must satisfy him/herself by inspection or otherwise as to the correctness of each of the statements contained within these particulars, (v) the vendor does not make or give either Braithwait or any person within their employment any authority to make or give any representation or warranty whatsoever in relation to this property. Wide angled lenses may be used in photographs.

Call us on 0207 289 8889 or email [sales@braithwait.co.uk](mailto:sales@braithwait.co.uk)

