



Elgin Avenue, London, W9 1HU
Asking Price £900,000 Leasehold





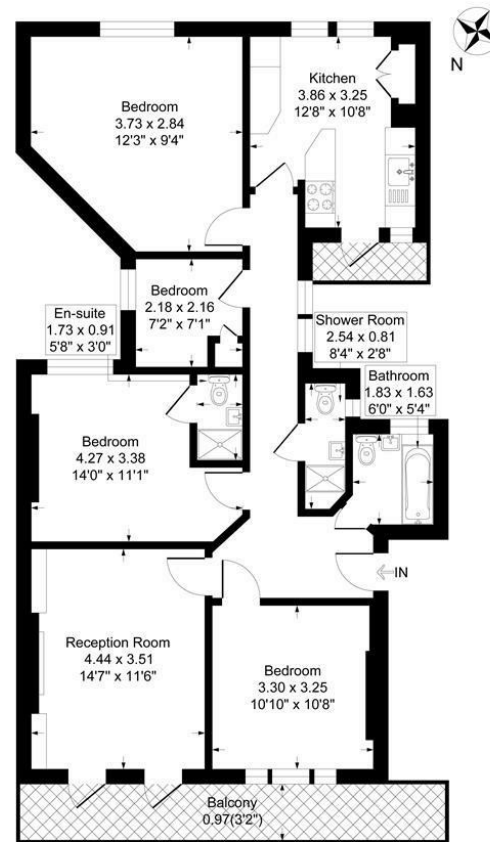
4 x  2 x  1 x 

A four bedroom un-modernised top floor flat with great potential located in the ever popular red brick Biddulph Mansions, and this well maintained block is situated at the top of Elgin Avenue. The accommodation is laid out with the bright south facing reception leading out to a narrow balcony stretching the whole width of the flat. There is a separate eat in kitchen looking out over the gardens at the back of the building, three double bedrooms and a single bedroom with a large family bathroom, and an additional shower room. Long lease. Two minutes walk to Maida Vale tube and the open spaces of Paddington Recreation Grounds.



Biddulph Mansions, Elgin Avenue, London, W9

Approximate Gross Internal Floor Area = 89.7 sq m / 966 sq ft



Third Floor

Illustration for identification purposes only, measurements are approximate, not to scale.

Important Notice Debussy Property Service Ltd trading as Braithwait for themselves and for the vendor of this property whose agents they are, give notice that (i) these particulars do not constitute any part of an offer or contract, (ii) all statements contained within these particulars are made without responsibility on the part of Braithwait or the vendor, (iii) whilst none in good faith, none of the statements contained within these particulars are to be relied upon as a statement of representation or fact, (iv) any intending purchaser must satisfy him/herself by inspection or otherwise as to the correctness of each of the statements contained within these particulars, (v) the vendor does not make or give either Braithwait or any person within their employment any authority to make or give any representation or warranty whatsoever in relation to this property. Wide angled lenses may be used in photographs.

Call us on 0207 289 8889 or email sales@braithwait.co.uk

