



*Fernhead Road, London, W9 3ET*  
*Asking Price £670,000 Leasehold*







2 x  2 x  1 x 

A bright two bedroom maisonette arranged over the first and second floors of a period building on Fernhead Road measuring 1060sq ft with its own private entrance on the ground floor. The flat has a large and airy 18'10" ft reception and separate contemporary kitchen also of generous proportions. The two double bedrooms both have built in storage and the master bedroom benefits from an ensuite bathroom, whilst both share another shower room. Close to the amenities of Harrow Road and a five minute walk to Westbourne Park tube. Long lease.





## Fernhead road, London, W9

Approximate Gross Internal Floor Area = 98.5 sq m / 1060 sq ft

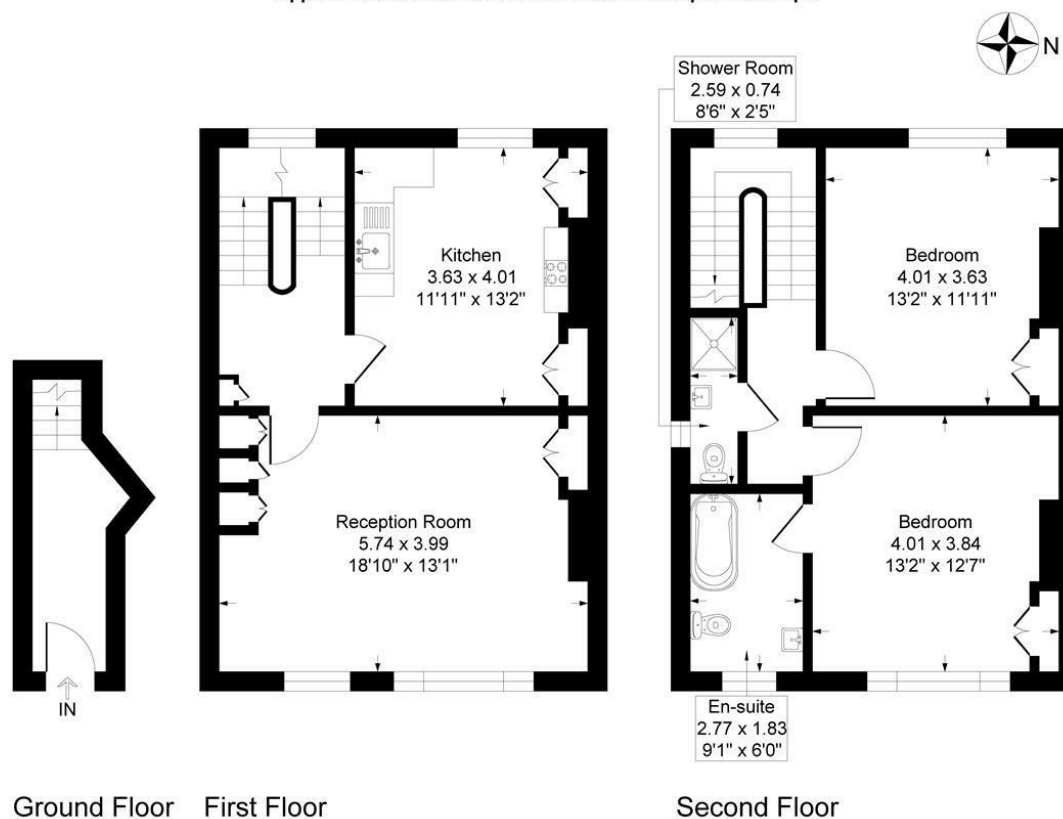


Illustration for identification purposes only, measurements are approximate, not to scale.

**Important Notice** Debussy Property Service Ltd trading as Braithwait for themselves and for the vendor of this property whose agents they are, give notice that (i) these particulars do not constitute any part of an offer or contract, (ii) all statements contained within these particulars are made without responsibility on the part of Braithwait or the vendor, (iii) whilst none in good faith, none of the statements contained within these particulars are to be relied upon as a statement of representation or fact, (iv) any intending purchaser must satisfy him/herself by inspection or otherwise as to the correctness of each of the statements contained within these particulars, (v) the vendor does not make or give either Braithwait or any person within their employment any authority to make or give any representation or warranty whatsoever in relation to this property. Wide angled lenses may be used in photographs.

Call us on 0207 289 8889 or email [sales@braithwait.co.uk](mailto:sales@braithwait.co.uk)

**B**  
BRAITHWAIT