



Shirland Road, London, W9 3JF
£2,500 Per Month





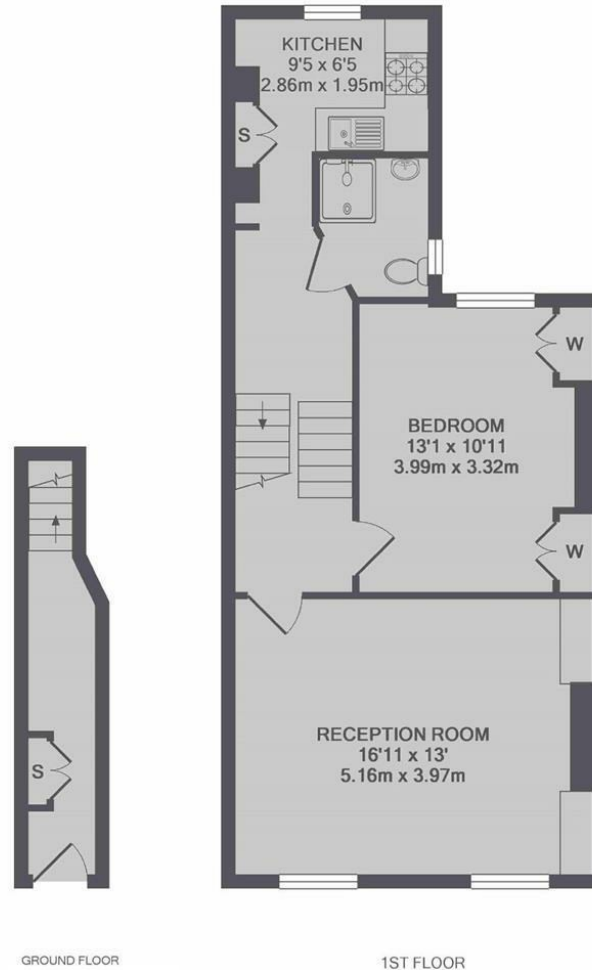
1 x  1 x  1 x 

Welcome to this charming property located on Shirland Road in London! This delightful house boasts a spacious living room, perfect for entertaining guests or simply relaxing after a long day. The modern bathroom is a true highlight, featuring luxurious underfloor heating for those chilly British mornings.

With large windows allowing plenty of natural light to flood in, this property feels bright and airy throughout. The bedroom offers a cozy retreat, ideal for a good night's sleep. The added bonus of loft storage provides ample space to keep your belongings neatly tucked away.

Situated in a great location, this property offers convenience and accessibility to all that London has to offer. Whether you're looking for trendy cafes, bustling markets, or beautiful parks, you'll find everything just a stone's throw away.





GROUND FLOOR

1ST FLOOR

TOTAL APPROX. FLOOR AREA 637 SQ.FT. (59.2 SQ.M.)

Important Notice Debussy Property Service Ltd trading as Braithwait for themselves and for the vendor of this property whose agents they are, give notice that (i) these particulars do not constitute any part of an offer or contract, (ii) all statements contained within these particulars are made without responsibility on the part of Braithwait or the vendor, (iii) whilst none in good faith, none of the statements contained within these particulars are to be relied upon as a statement of representation or fact, (iv) any intending purchaser must satisfy him/herself by inspection or otherwise as to the correctness of each of the statements contained within these particulars, (v) the vendor does not make or give either Braithwait or any person within their employment any authority to make or give any representation or warranty whatsoever in relation to this property. Wide angled lenses may be used in photographs.

Call us on 0207 289 8889 or email sales@braithwait.co.uk

