



*The Waterfront Apartments, Maida Vale, W9 2JY  
£4,400*







3 x  3 x  1 x 

An impressive contemporary three bedroom apartment located directly overlooking the Grand Union Canal at the Waterfront development. Stunning views are afforded from the reception, two of the bedrooms, as well as the 10'7" deep terrace which also spans the width of the property. The accommodation is arranged as an 18'3" reception, with sliding doors leading onto the terrace and separate contemporary kitchen, master bedroom with built in wardrobes and en-suite shower room, a further two double bedrooms and a family bathroom. Benefits include two demised car parking spaces located in the underground garage. A stones throw from Little Venice and the bars and cafes of Little Venice.

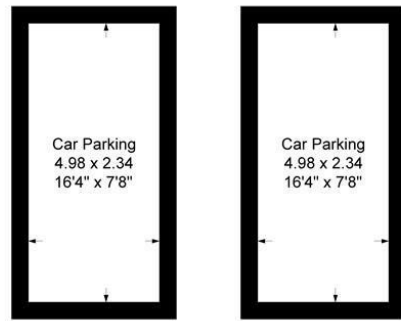
Open to Shares and Pet Friendly



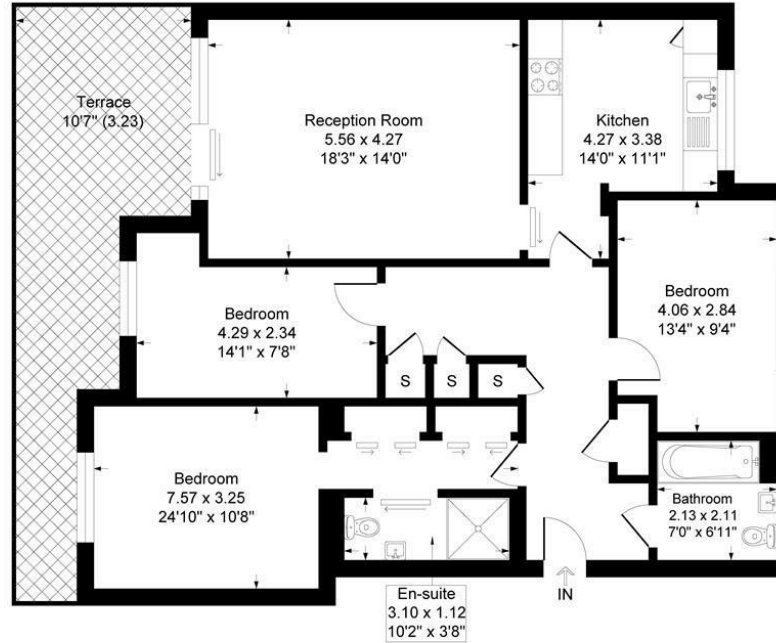
# Waterfront Amberley road, London, W9

Approximate Gross Internal Floor Area = 106.1 sq m / 1143 sq ft

Lower Ground Floor = 23.2 sq m / 250 sq ft



Lower Ground Floor



Ground Floor

Illustration for identification purposes only, measurements are approximate, not to scale.