



*4 Maida Vale, London, W9 1SP
Offers In The Region Of £800,000 Leasehold*





2 x  2 x  1 x 

A spacious two bedroom second floor apartment in a contemporary building with great views and conveniently situated on Maida Vale opposite the bars and shops of Clifton Road . The 804 sq ft flat comprises a generous sized reception measuring over 20ft with open plan kitchen and two double bedrooms with ample built in wardrobes and one with an en-suite. There is also a separate tiled family bathroom. Other benefits include a lift, a porter and underground car parking space for one car included in the service charge. Ideally located close to transport links into the West End and Marble Arch. Leasehold.



Winterton House, Maida Vale, London W9

Approximate Gross Internal Floor Area = 804 sq m / 74.6 sq ft

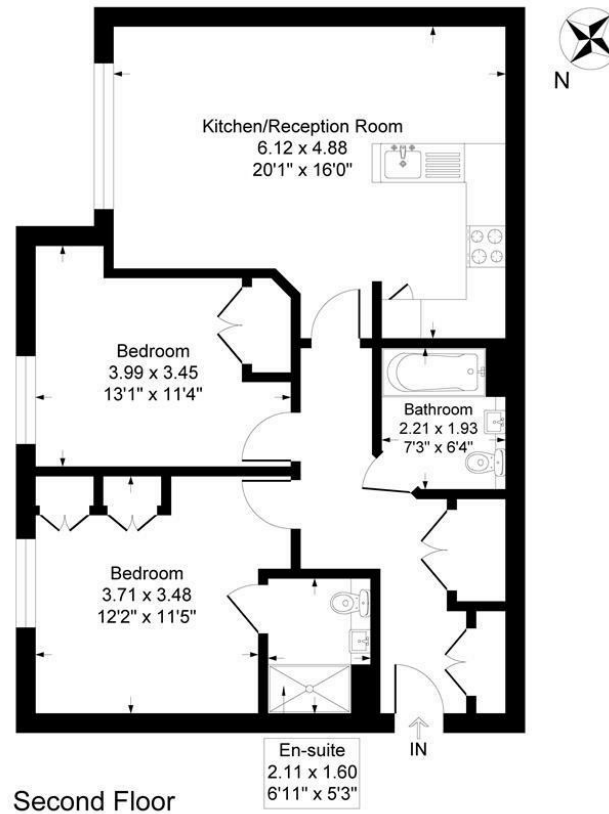


Illustration for identification purposes only, measurements are approximate, not to scale.

Important Notice Debussy Property Service Ltd trading as Braithwait for themselves and for the vendor of this property whose agents they are, give notice that (i) these particulars do not constitute any part of an offer or contract, (ii) all statements contained within these particulars are made without responsibility on the part of Braithwait or the vendor, (iii) whilst none in good faith, none of the statements contained within these particulars are to be relied upon as a statement of representation or fact, (iv) any intending purchaser must satisfy him/herself by inspection or otherwise as to the correctness of each of the statements contained within these particulars, (v) the vendor does not make or give either Braithwait or any person within their employment any authority to make or give any representation or warranty whatsoever in relation to this property. Wide angled lenses may be used in photographs.

Call us on 0207 289 8889 or email sales@braithwait.co.uk

B
BRAITHWAIT