



Salisbury Road, NW6 6NN
£1,600 Per Month



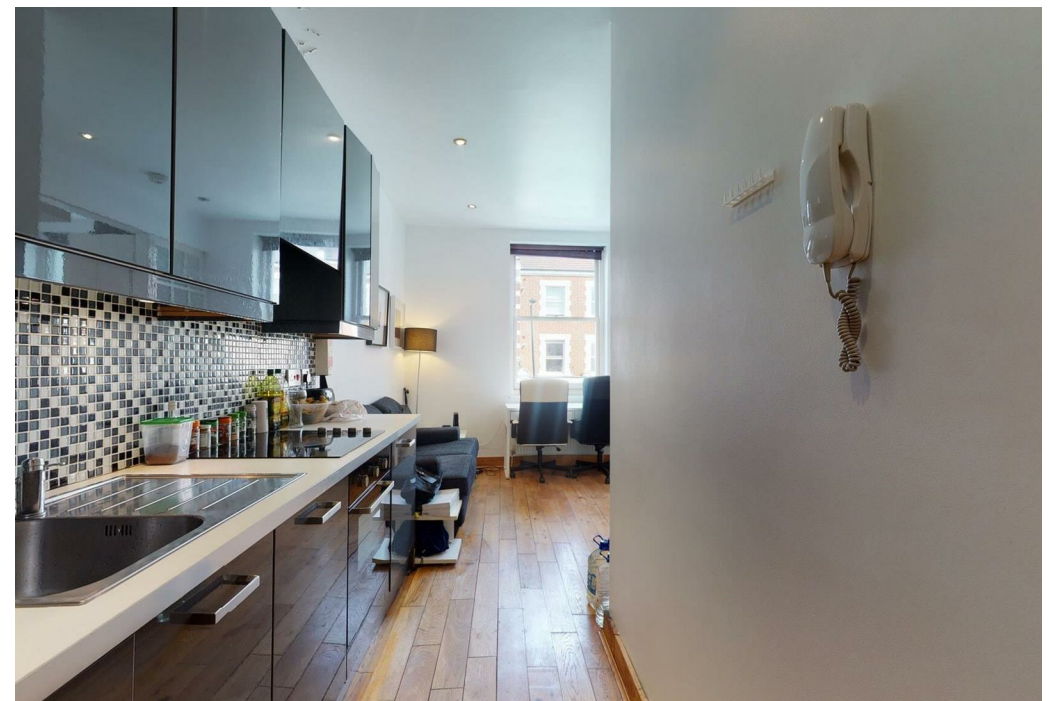


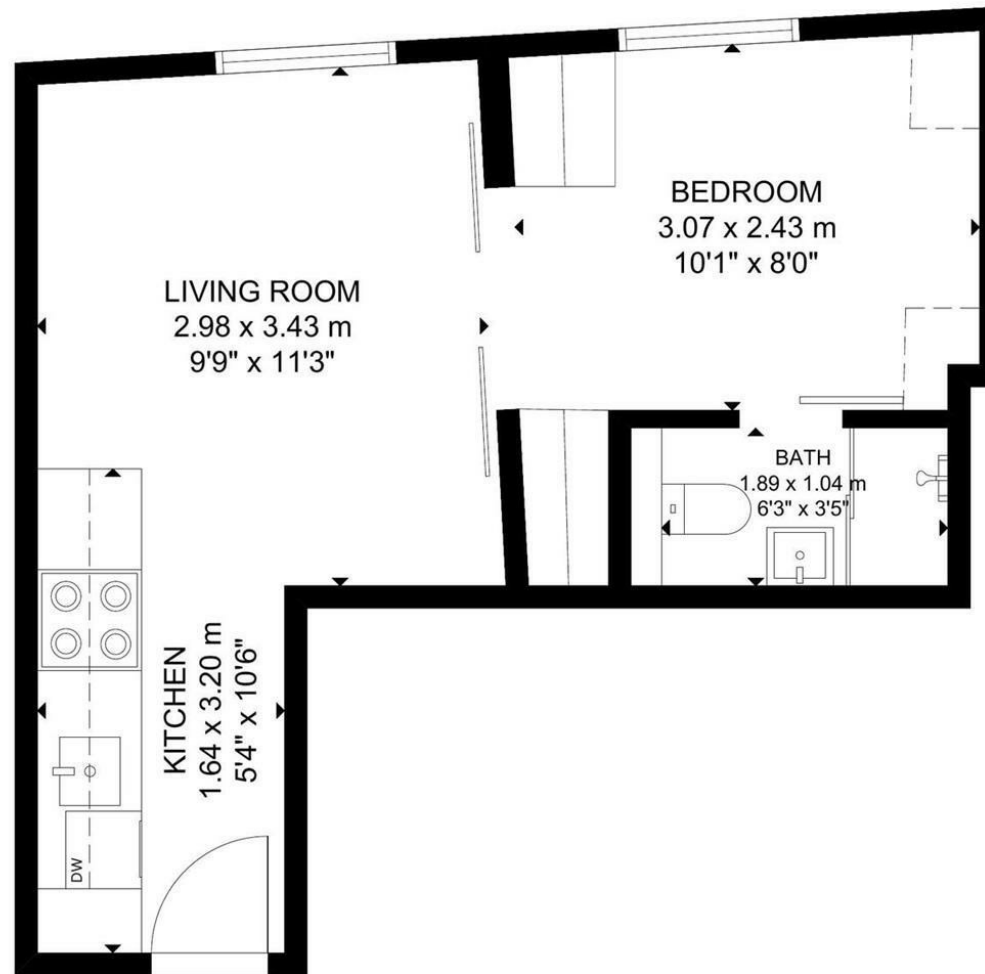
1 x  1 x  1 x 

Braithwait presents a modern flat to rent at £310 per week in Queen's Park. The property is on Salusbury Road and comprises 1 bedroom and 1 bathroom.

Covering 272sq ft in living space and situated on the first floor, this modern property is currently furnished and comes with big windows, high ceilings and ample storage.

The flat is student-friendly and has a current EPC rating of D. Located close to local parks, amenities and great transport links for Queen's Park and Kilburn Park stations.





FIRST FLOOR

GROSS INTERNAL AREA
 TOTAL: 25 m²/274 sq ft
 FIRST FLOOR: 25 m²/274 sq ft
 SIZE AND DIMENSIONS ARE APPROXIMATE. ACTUAL MAY VARY.

Important Notice Debussy Property Service Ltd trading as Braithwait for themselves and for the vendor of this property whose agents they are, give notice that (i) these particulars do not constitute any part of an offer or contract, (ii) all statements contained within these particulars are made without responsibility on the part of Braithwait or the vendor, (iii) whilst none in good faith, none of the statements contained within these particulars are to be relied upon as a statement of representation or fact, (iv) any intending purchaser must satisfy him/herself by inspection or otherwise as to the correctness of each of the statements contained within these particulars, (v) the vendor does not make or give either Braithwait or any person within their employment any authority to make or give any representation or warranty whatsoever in relation to this property. Wide angled lenses may be used in photographs.

Call us on 0207 289 8889 or email sales@braithwait.co.uk

