



Warwick Avenue, London, W9 2PR
Asking Price £2,325,000 Share of Freehold





4 x  4 x  1 x 

A superb, and very bright four bedroom triplex, located in a white stucco period building, on the corner of Warwick Avenue and Formosa street. The flat measuring nearly 2000sqft has its entrance on the second floor and leads from the internal lobby into an impressive 32ft open plan reception/kitchen and dining area, with high ceilings, dual aspect windows and double doors opening onto a small balcony., recently fully renovated, with underfloor heating installed throughout and Miele appliances. The third floor comprises two very good sized double bedrooms, each with ensuite shower room, a small double bedroom and separate family bathroom. The master bedroom is situated on the fourth floor with ensuite shower room and large storage areas under the eaves. In the heart of Little Venice, and two minutes walk to Warwick Avenue tube, and very close to the restaurants and cafes of Paddington Basin and the station. Share of Freehold.



Warwick Avenue, London, W9

Approximate Gross Internal Floor Area = 179.4 sq m / 1932 sq ft

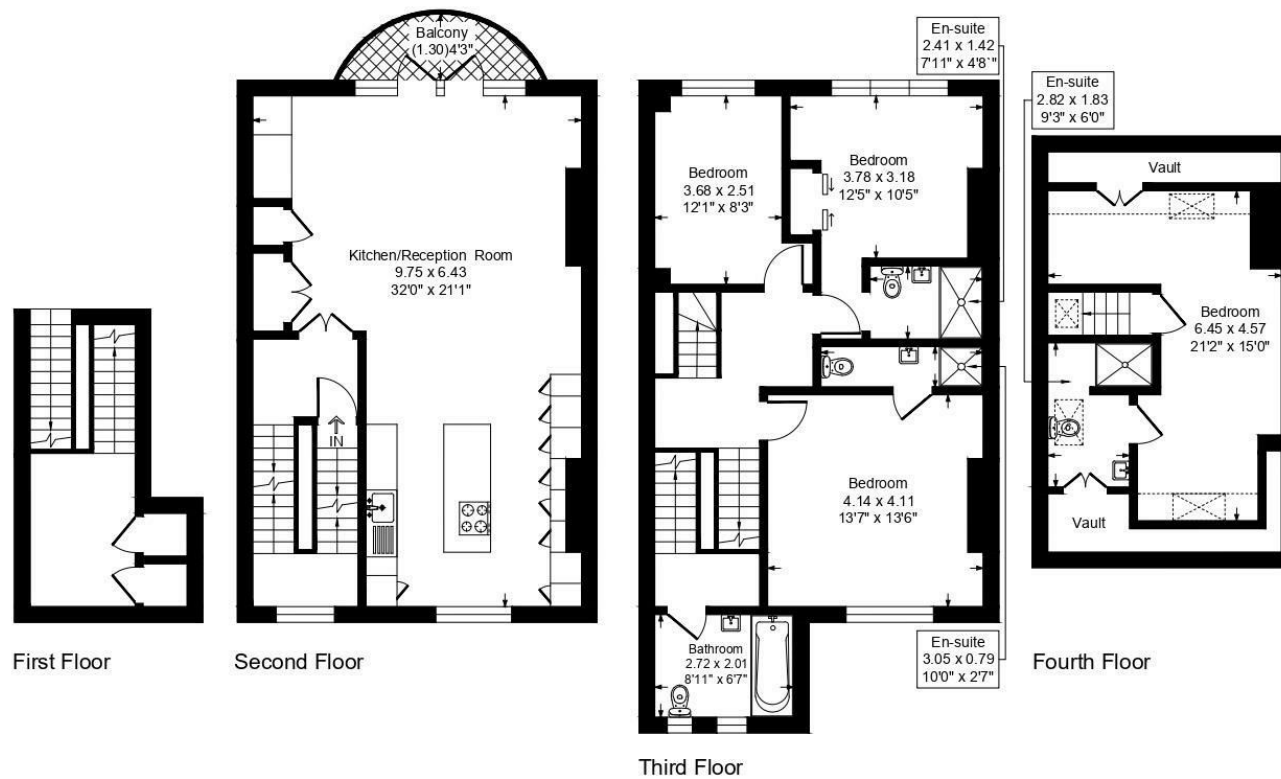


Illustration for identification purposes only, measurements are approximate, not to scale.

Important Notice Debussy Property Service Ltd trading as Braithwait for themselves and for the vendor of this property whose agents they are, give notice that (i) these particulars do not constitute any part of an offer or contract, (ii) all statements contained within these particulars are made without responsibility on the part of Braithwait or the vendor, (iii) whilst none in good faith, none of the statements contained within these particulars are to be relied upon as a statement of representation or fact, (iv) any intending purchaser must satisfy him/herself by inspection or otherwise as to the correctness of each of the statements contained within these particulars, (v) the vendor does not make or give either Braithwait or any person within their employment any authority to make or give any representation or warranty whatsoever in relation to this property. Wide angled lenses may be used in photographs.

Call us on 0207 289 8889 or email sales@braithwait.co.uk

B
BRAITHWAIT