



Greville Road, London, NW6 5HY
Asking Price £800,000 Leasehold





2 x  2 x  1 x 

A fabulous contemporary two bedroom, two bathroom garden flat with an abundance of natural light and a wonderful sunny and very private garden. The flat has been renovated to a high standard, and is situated within a period terrace on Greville road and has the advantage of high ceilings. The accommodation has a generous sized reception which has a mostly glass ceiling, and glass doors opening the width of the reception onto the garden. The flat benefits from having two double bedrooms, both with good storage, the master with en suite bathroom, and a small office leading off the bedroom, and a stylish shower room. Ideal location between Maida Vale and St Johns Wood. Long lease.



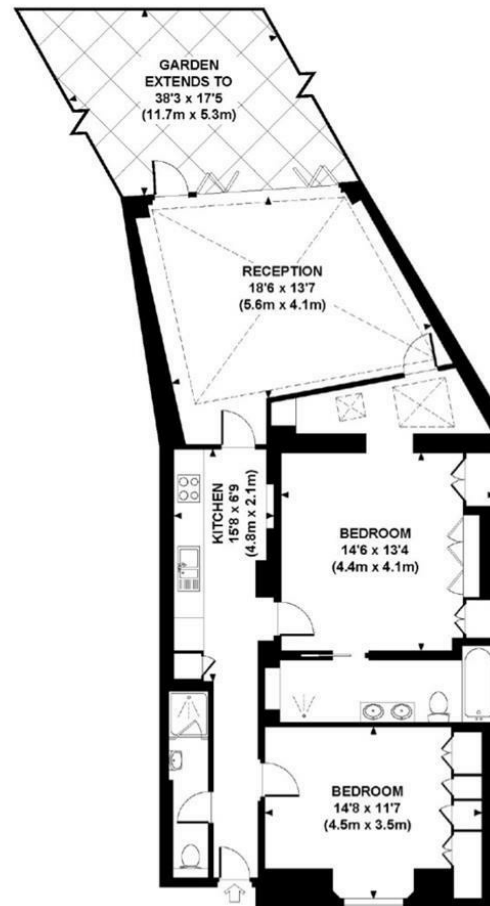
GREVILLE ROAD, NW6

Approx. gross internal area

955 Sq Ft. / 88.7 Sq M.

Representation of current layout.

Not to scale.



LOWER GROUND FLOOR

Important Notice Debussy Property Service Ltd trading as Braithwait for themselves and for the vendor of this property whose agents they are, give notice that (i) these particulars do not constitute any part of an offer or contract, (ii) all statements contained within these particulars are made without responsibility on the part of Braithwait or the vendor, (iii) whilst none in good faith, none of the statements contained within these particulars are to be relied upon as a statement of representation or fact, (iv) any intending purchaser must satisfy him/herself by inspection or otherwise as to the correctness of each of the statements contained within these particulars, (v) the vendor does not make or give either Braithwait or any person within their employment any authority to make or give any representation or warranty whatsoever in relation to this property. Wide angled lenses may be used in photographs.

Call us on 0207 289 8889 or email sales@braithwait.co.uk

B
BRAITHWAIT