



*Warwick Avenue, London, W9 2PP*  
*Asking Price £549,000 Share of Freehold*





1 x  1 x  1 x 

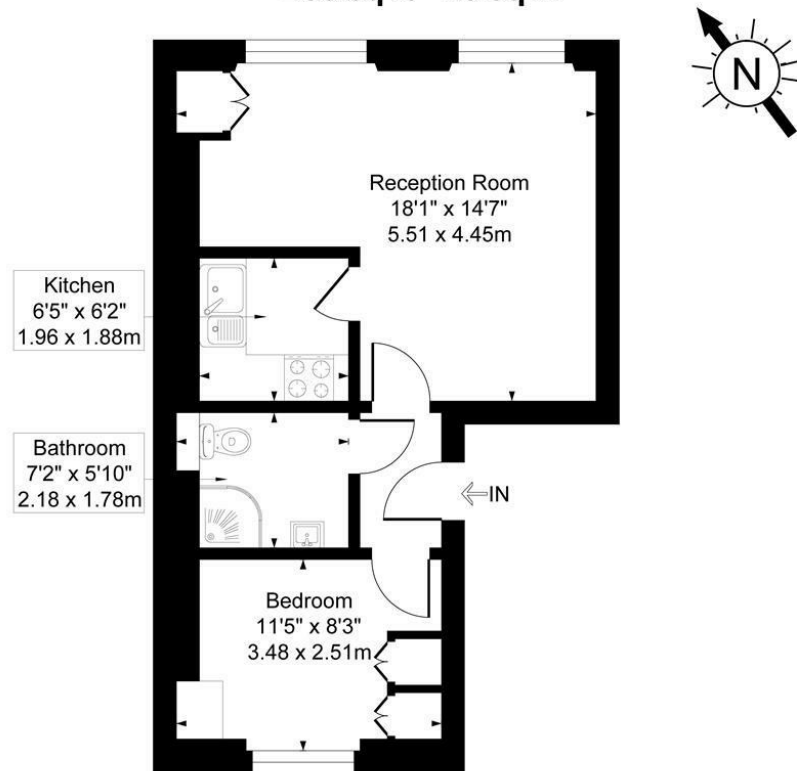
A lovely bright one bedroom flat located on the second floor of a period building on Warwick Avenue, comprising reception with a separate dining area looking over the tree lined road, and situated next to the kitchen. A double bedroom with views over gardens and Elnathan Mews, and benefitting from built-in wardrobes. Contemporary shower room. Share of Freehold. Other benefits include very close proximity to Warwick Avenue tube station, the shops and cafes of Formosa street and the picturesque canals of Little Venice.



## Warwick Avenue, London, W9

Approximate Gross Internal Area

436 sq ft - 40 sq m



### Second Floor

Illustration for identification purposes only, not in scale

**Important Notice** Debussy Property Service Ltd trading as Braithwait for themselves and for the vendor of this property whose agents they are, give notice that (i) these particulars do not constitute any part of an offer or contract, (ii) all statements contained within these particulars are made without responsibility on the part of Braithwait or the vendor, (iii) whilst none in good faith, none of the statements contained within these particulars are to be relied upon as a statement of representation or fact, (iv) any intending purchaser must satisfy him/herself by inspection or otherwise as to the correctness of each of the statements contained within these particulars, (v) the vendor does not make or give either Braithwait or any person within their employment any authority to make or give any representation or warranty whatsoever in relation to this property. Wide angled lenses may be used in photographs.

Call us on 0207 289 8889 or email [sales@braithwait.co.uk](mailto:sales@braithwait.co.uk)

