



*Warwick Gardens, London, W14 8PP
Offers In The Region Of £2,000,000 Share of*



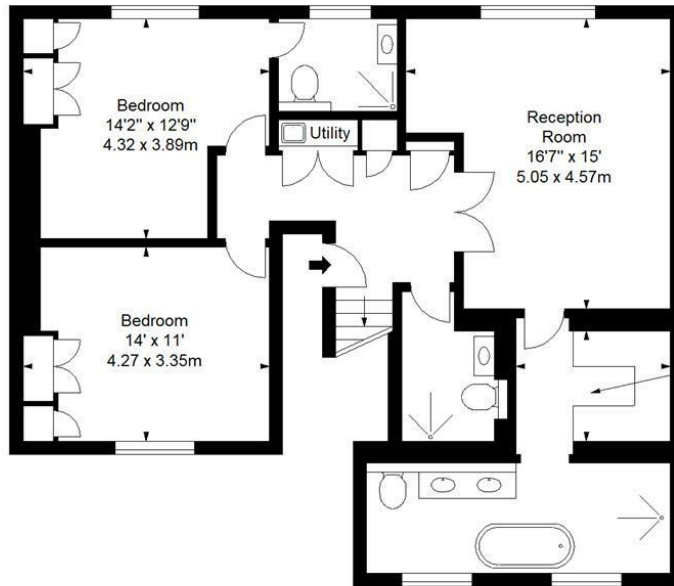
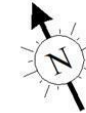


3 x  3 x  2 x 

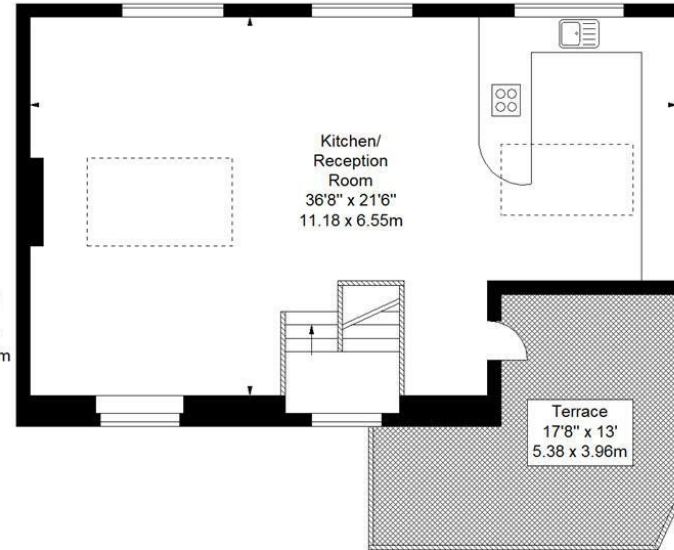
An impressive three bedroom lateral conversion situated on the second and third floors of a stunning period building. The property has been meticulously refurbished to an impeccably high standard. The entrance floor comprises a master suite with walk through wardrobe and en-suite, two further double bedrooms (one with en-suite), family bathroom and concealed utility area. The top floor, spread over 40 ft, presents a bespoke kitchen with integrated Miele appliances, dining and reception area, leading out to a private roof terrace.



Warwick Gardens, W14
Approx. Gross Internal Area*
1793 Ft² - 166.57 M²



Second Floor



Third Floor

Every attempt has been made to ensure the accuracy of this floor plan however, measurements are approximate and for illustration purposes only. Measured in accordance with the RICS code of measuring practice. Not to scale.
© Inside Photography Ltd.
Tel 07850 620 122, 0207 263 2188
www.ipinteriors.co.uk

Important Notice Debussy Property Service Ltd trading as Braithwait for themselves and for the vendor of this property whose agents they are, give notice that (i) these particulars do not constitute any part of an offer or contract, (ii) all statements contained within these particulars are made without responsibility on the part of Braithwait or the vendor, (iii) whilst none in good faith, none of the statements contained within these particulars are to be relied upon as a statement of representation or fact, (iv) any intending purchaser must satisfy him/herself by inspection or otherwise as to the correctness of each of the statements contained within these particulars, (v) the vendor does not make or give either Braithwait or any person within their employment any authority to make or give any representation or warranty whatsoever in relation to this property. Wide angled lenses may be used in photographs.

Call us on 0207 289 8889 or email sales@braithwait.co.uk

