



*Cresta House, London, NW3 6HT*  
*£4,116 Per Month*





2 x  2 x  1 x 

A simply stunning 2 bedroom Flat found in London NW3 is available, benefiting from a beautifully represented living space and lively environment. Quick and easy access to the nearby markets and close to local transportation. The facilities include: Abundance of natural light, Available Furnished or Unfurnished, Balcony, Close to public transport, Double glazing, En suite.

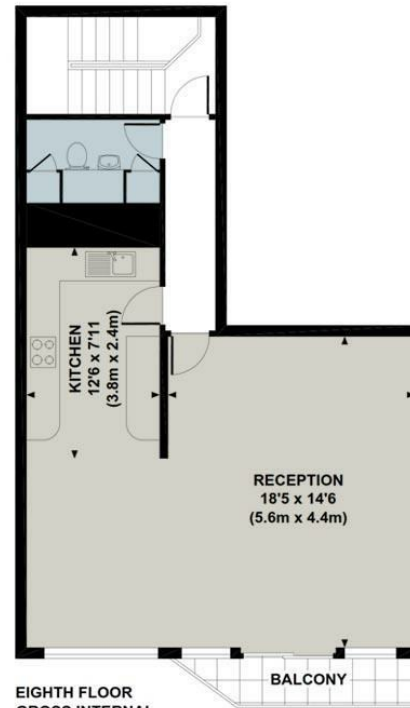


## CRESTA HOUSE

Approximate Gross Internal Area 1075 sq ft / 99.9 sq m



SEVENTH FLOOR  
GROSS INTERNAL  
FLOOR AREA 442 SQ FT



EIGHTH FLOOR  
GROSS INTERNAL  
FLOOR AREA 633 SQ FT

Although every attempt has been made to ensure accuracy, all measurements are approximate. The floor plan's for illustrative purposes only and not to scale. Measured in accordance to RICS standards. DE-PHOTOGRAPHY.NET

**Important Notice** Debussy Property Service Ltd trading as Braithwait for themselves and for the vendor of this property whose agents they are, give notice that (i) these particulars do not constitute any part of an offer or contract, (ii) all statements contained within these particulars are made without responsibility on the part of Braithwait or the vendor, (iii) whilst none in good faith, none of the statements contained within these particulars are to be relied upon as a statement of representation or fact, (iv) any intending purchaser must satisfy him/herself by inspection or otherwise as to the correctness of each of the statements contained within these particulars, (v) the vendor does not make or give either Braithwait or any person within their employment any authority to make or give any representation or warranty whatsoever in relation to this property. Wide angled lenses may be used in photographs.

Call us on 0207 289 8889 or email [sales@braithwait.co.uk](mailto:sales@braithwait.co.uk)

