



*Blomfield Road, London, W9 2PA*  
*Asking Price £675,000 Leasehold*





1 x  1 x  1 x 

A lovely bright, larger than average, one bedroom flat with views over the Regents Canal. Situated on the second floor of a period white stucco terrace on Blomfield Road, arguably one of the best roads in Little Venice. The 17'8"ft reception has two large sash windows facing south to the canal, original features and a separate contemporary kitchen. The double bedroom, also measuring 17'8"ft benefits from views over communal gardens, (which are for the benefit of the building), good storage and separate bathroom. Other benefits include undemised small balcony to front of building and very close proximity to Warwick Avenue tube and Paddington Station. Long lease.



**Blomfield Road, London, W9**  
Approximate Gross Internal Area  
527 sq ft - 49 sq m

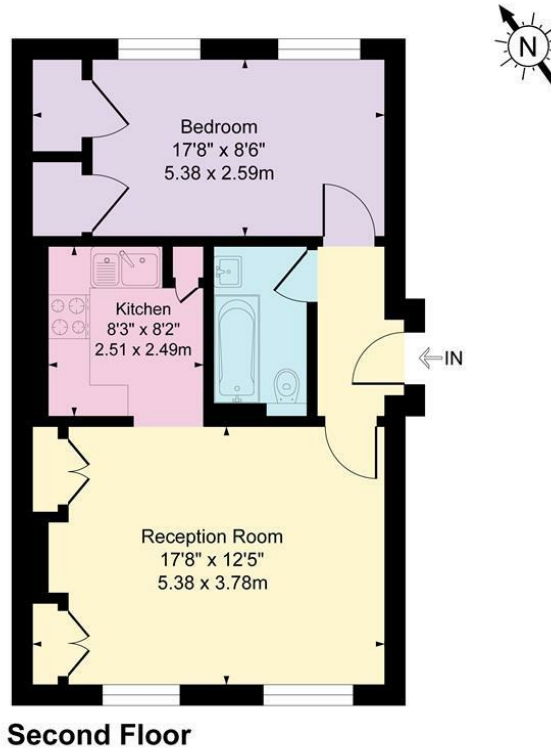


Illustration for identification purposes only, not in scale

**Important Notice** Debussy Property Service Ltd trading as Braithwait for themselves and for the vendor of this property whose agents they are, give notice that (i) these particulars do not constitute any part of an offer or contract, (ii) all statements contained within these particulars are made without responsibility on the part of Braithwait or the vendor, (iii) whilst none in good faith, none of the statements contained within these particulars are to be relied upon as a statement of representation or fact, (iv) any intending purchaser must satisfy him/herself by inspection or otherwise as to the correctness of each of the statements contained within these particulars, (v) the vendor does not make or give either Braithwait or any person within their employment any authority to make or give any representation or warranty whatsoever in relation to this property. Wide angled lenses may be used in photographs.

Call us on 0207 289 8889 or email [sales@braithwait.co.uk](mailto:sales@braithwait.co.uk)

