



*Elnathan Mews, London, W9 2JE
Offers In The Region Of £1,395,000 Freehold*

B
BRAITHWAIT

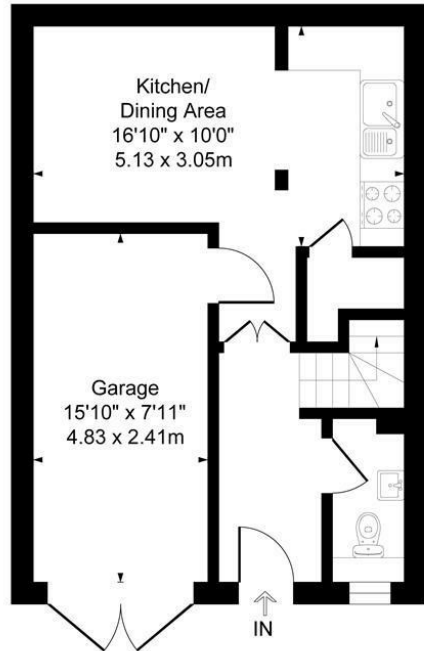
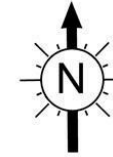


2 x  3 x  2 x 

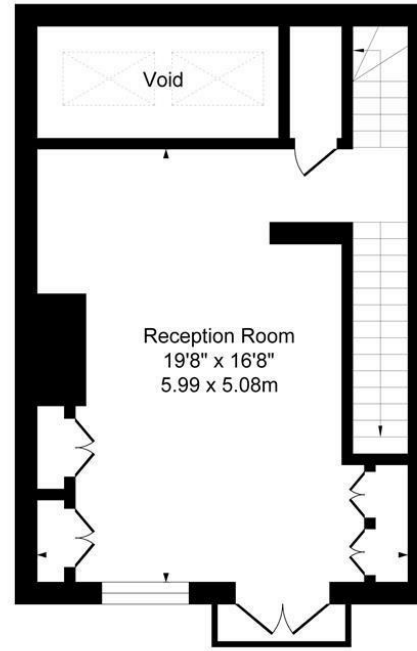
An immaculately presented two bedroom mews house in the award winning Elnathan Mews, arranged over three floors and measuring 1143 sq ft, the accommodation comprises a stylish chrome kitchen and dining room on the ground floor, as well as a garage and guest cloakroom. The first floor facing south has a generous 19'8" ft reception and the second floor comprises two double bedrooms, a shower room as well as a family bathroom. Benefits include very close proximity to Warwick Avenue tube, as well as the picturesque canals of Little Venice and its bars and cafes. Freehold.



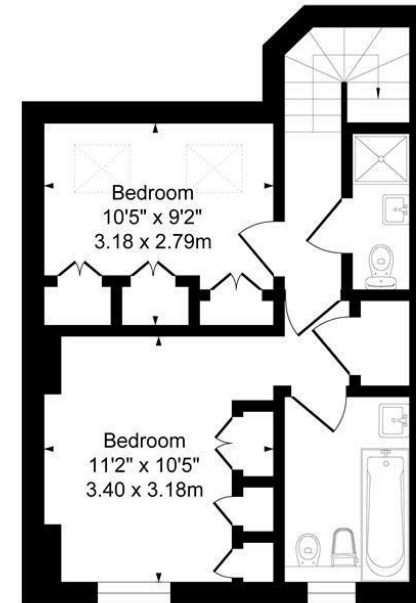
Elnathan Mews, London, W9
Approximate Gross Internal Area = 1018 sq ft - 95 sq m
Garage Area = 125 sq ft - 12 sq m
Total Area = 1143 sq ft - 106 sq m



Ground Floor



First Floor



Second Floor

Illustration for identification purposes only, not in scale

Important Notice Debussy Property Service Ltd trading as Braithwait for themselves and for the vendor of this property whose agents they are, give notice that (i) these particulars do not constitute any part of an offer or contract, (ii) all statements contained within these particulars are made without responsibility on the part of Braithwait or the vendor, (iii) whilst none in good faith, none of the statements contained within these particulars are to be relied upon as a statement of representation or fact, (iv) any intending purchaser must satisfy him/herself by inspection or otherwise as to the correctness of each of the statements contained within these particulars, (v) the vendor does not make or give either Braithwait or any person within their employment any authority to make or give any representation or warranty whatsoever in relation to this property. Wide angled lenses may be used in photographs.

Call us on 0207 289 8889 or email sales@braithwait.co.uk

