



*East Harbet Road, W2 1AN*  
*£8,233 Per Month*





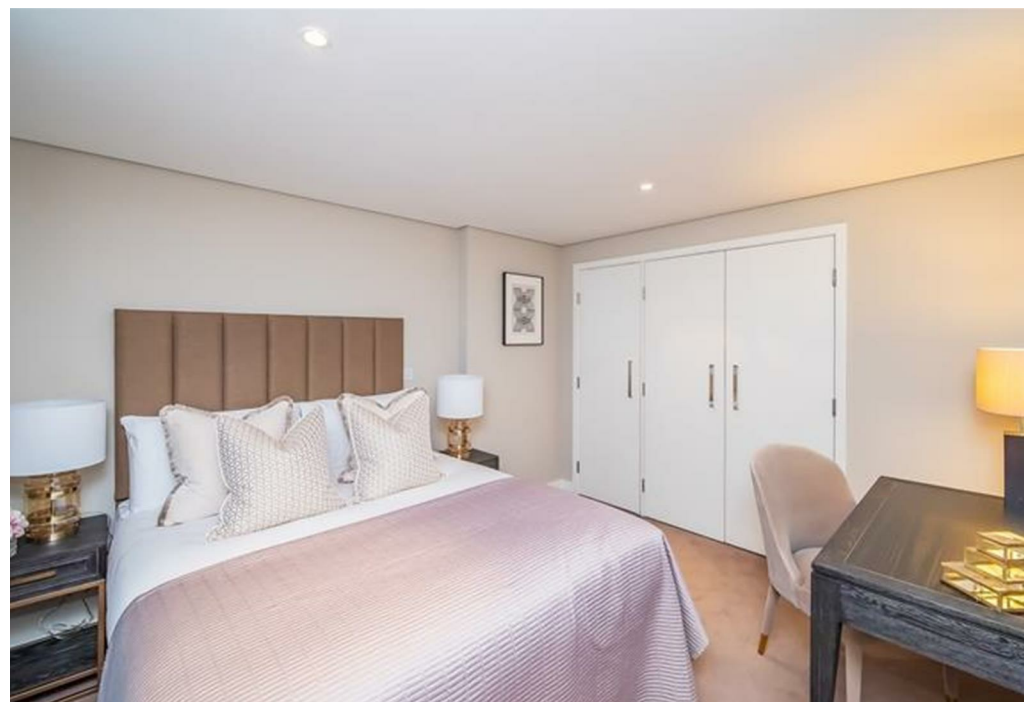


3 x  2 x  1 x 

Braithwait are delighted to offer this stunning 1118 sq ft three bedroom interior designed apartment located on the 11th floor within this prestigious development set within the heart of the Paddington Basin.

This unique apartment comprises; a spacious living and entertaining open plan kitchen and reception covering over 28ft which leads to a magnificent 36ft private roof terrace with breath-taking views over London and the Grand Union Canal, three double bedrooms (the master bedroom with an en-suite bathroom), a guest cloakroom, and ample storage space.

The apartment is located in one of W2's most admired addresses which features concierge, lift service, and secure underground parking,



**Important Notice** Debussy Property Service Ltd trading as Braithwait for themselves and for the vendor of this property whose agents they are, give notice that (i) these particulars do not constitute any part of an offer or contract, (ii) all statements contained within these particulars are made without responsibility on the part of Braithwait or the vendor, (iii) whilst none in good faith, none of the statements contained within these particulars are to be relied upon as a statement of representation or fact, (iv) any intending purchaser must satisfy him/herself by inspection or otherwise as to the correctness of each of the statements contained within these particulars, (v) the vendor does not make or give either Braithwait or any person within their employment any authority to make or give any representation or warranty whatsoever in relation to this property. Wide angled lenses may be used in photographs.

Call us on 0207 289 8889 or email [sales@braithwait.co.uk](mailto:sales@braithwait.co.uk)



BRAITHWAIT