



Delaware Road, London, W9 2LL
Asking Price £735,000 Share of Freehold



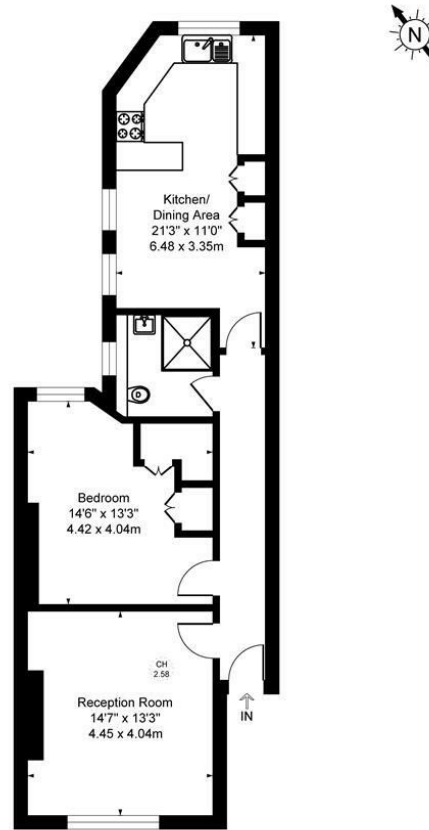


1 x  1 x  1 x 

A lovely extremely bright, larger than average, one bedroom flat measuring 737 sq ft situated on a quiet road on the fourth floor of Delaware mansions in the heart of Maida Vale. The accommodation comprises a 21'3" kitchen/diner great for entertaining and a separate reception room with feature fireplace, a double bedroom with great storage and contemporary shower room. The flat is ideally located close to Warwick Avenue tube station and the picturesque canals of Little Venice and proximity to Paddington Station. Share of Freehold.



Delaware Mansions, Delaware Road, London, W9
Approximate Gross Internal Area
737 sq ft - 68 sq m



Fourth Floor

Illustration for identification purposes only, not in scale

Important Notice Debussy Property Service Ltd trading as Braithwait for themselves and for the vendor of this property whose agents they are, give notice that (i) these particulars do not constitute any part of an offer or contract, (ii) all statements contained within these particulars are made without responsibility on the part of Braithwait or the vendor, (iii) whilst none in good faith, none of the statements contained within these particulars are to be relied upon as a statement of representation or fact, (iv) any intending purchaser must satisfy him/herself by inspection or otherwise as to the correctness of each of the statements contained within these particulars, (v) the vendor does not make or give either Braithwait or any person within their employment any authority to make or give any representation or warranty whatsoever in relation to this property. Wide angled lenses may be used in photographs.

Call us on 0207 289 8889 or email sales@braithwait.co.uk

