



*Fernhead Road, London, W9 3EY  
Asking Price £625,000 Leasehold*





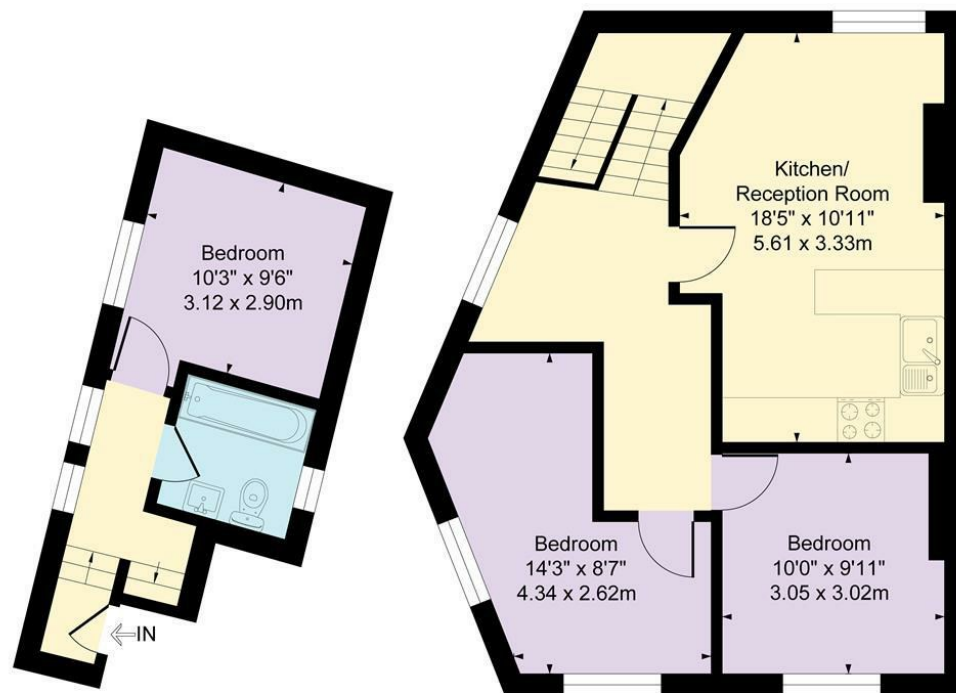
3 x  1 x  1 x 

A three bedroom maisonette on Fernhead road located in a Victorian building on the corner of Shirland road. Situated on the second and third floors the accommodation comprises a double bedroom and family bathroom on the second floor and good sized 18'5" reception with open plan kitchen and two further double bedrooms. Close to all amenities of both Queens Park and Maida Hill the flat also benefits from a 999 year lease.



# Fernhead Road, London, W9

Approximate Gross Internal Area  
757 sq ft - 70 sq m



**Second Floor**

**Third Floor**

Illustration for identification purposes only, not in scale

**Important Notice** Debussy Property Service Ltd trading as Braithwait for themselves and for the vendor of this property whose agents they are, give notice that (i) these particulars do not constitute any part of an offer or contract, (ii) all statements contained within these particulars are made without responsibility on the part of Braithwait or the vendor, (iii) whilst none in good faith, none of the statements contained within these particulars are to be relied upon as a statement of representation or fact, (iv) any intending purchaser must satisfy him/herself by inspection or otherwise as to the correctness of each of the statements contained within these particulars, (v) the vendor does not make or give either Braithwait or any person within their employment any authority to make or give any representation or warranty whatsoever in relation to this property. Wide angled lenses may be used in photographs.

Call us on 0207 289 8889 or email [sales@braithwait.co.uk](mailto:sales@braithwait.co.uk)

