

Flat

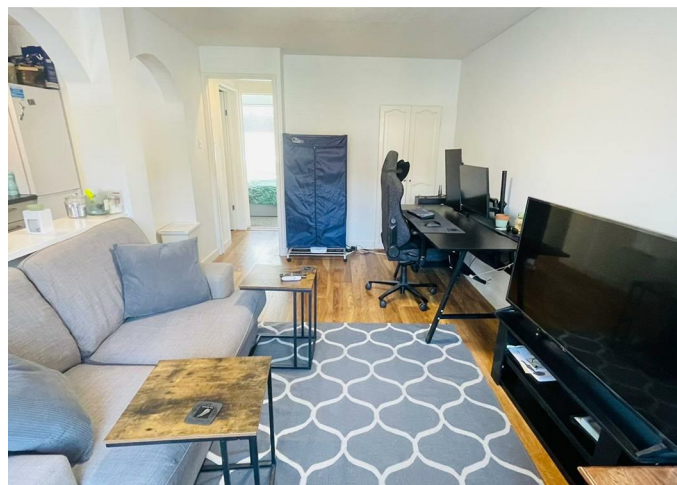
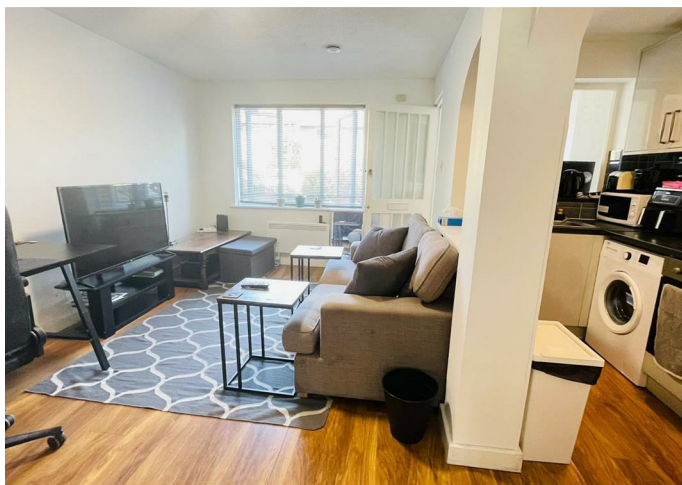
SW19 2UA

PCM

£1,645

FEATURES

- Ground Floor Maisonette
- Off-Street Parking
- Plenty of storage
- Quiet cul de sac location
- Private Patio Garden
- 1 Double Bedroom
- Modern Kitchen & Bathroom

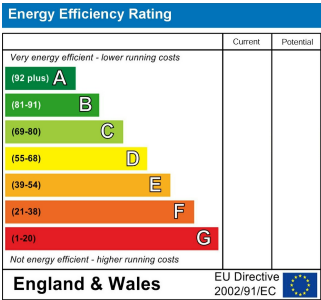


1 Bedroom Flat located in London

Presenting an unfurnished contemporary ground floor maisonette, this purpose-built residence offers a delightful double bedroom along with the convenience of off-street parking. Situated within a private development in the heart of Colliers Wood, this property boasts an enviable location just steps away from the vibrant entertainment hub of Merton Abbey Mills. Additionally, Colliers Wood Tube station is within easy walking distance. Immaculately maintained, the maisonette features a modern fitted kitchen and bathroom. A notable highlight of this property is its private front patio garden, a rare and desirable feature for this type of home.

Call us on
020 8396 7171
hello@newbrix.co.uk

Council Tax Band



Agents Note: Whilst every care has been taken to prepare these particulars, they are for guidance purposes only. All measurements are approximate and are for general guidance purposes only and whilst every care has been taken to ensure their accuracy, they should not be relied upon and potential buyers are advised to recheck the measurements.

