



Flat

**SM1 2SE**

PCM

**£1,750**

FEATURES

- Spacious three-bedroom family apartment
- Stylish modern bathroom
- Secure entry and well-kept communal areas
- Excellent transport links via Sutton and West Sutton stations
- Bright open-plan kitchen and living room
- New boiler with gas central heating
- Close to Sutton schools and High Street amenities



3



1



1



C



# 3 Bedroom Flat located in Sutton

Call us on  
**020 8396 7171**  
**hello@newbrix.co.uk**

Step inside this beautifully refurbished three-bedroom apartment and discover a home designed for modern family living. The bright, open-plan kitchen and living room provide a welcoming heart to the property, complemented by a sleek, contemporary bathroom. Recently redecorated throughout and enhanced with a brand-new boiler and gas central heating, this apartment offers both style and efficiency.

All three bedrooms are generously proportioned, creating flexible space for family life, working from home, or guests. Perfectly positioned near highly regarded schools, excellent transport links at West Sutton and Sutton stations, and the wide choice of shops, cafés, and restaurants on Sutton High Street, it combines everyday convenience with modern comfort.

Secure entry and well-maintained communal areas further elevate the appeal, making this a truly move-in ready home for families or professionals seeking space, style, and a prime location.

Viewing is a must

Council Tax Band  
**C**

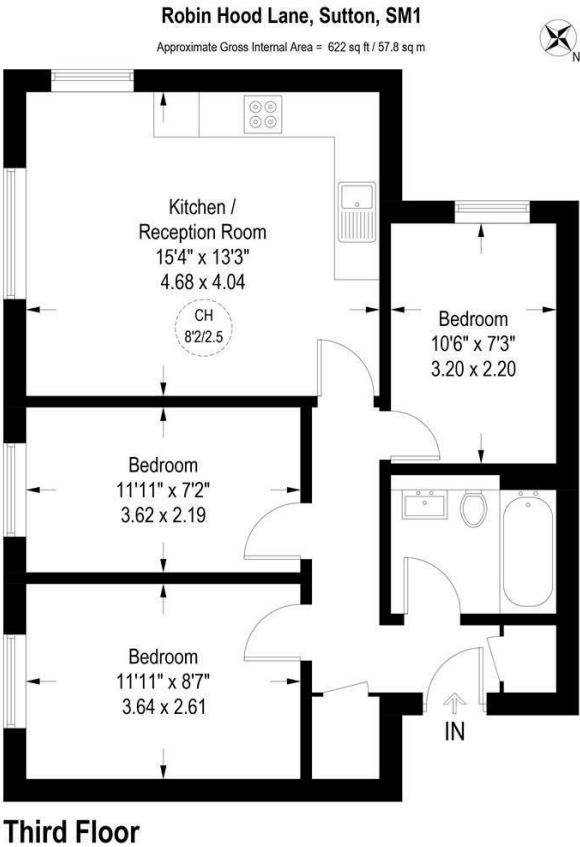
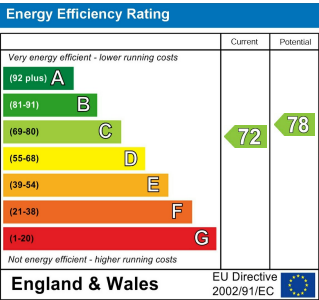


Illustration for identification purposes only, measurements are approximate, not to scale. (ID1236669)



Agents Note: Whilst every care has been taken to prepare these particulars, they are for guidance purposes only. All measurements are approximate and are for general guidance purposes only and whilst every care has been taken to ensure their accuracy, they should not be relied upon and potential buyers are advised to recheck the measurements.

