



Flat

# GROUND FLOOR FLAT 259 ST. MARGARETS ROAD, TWICKENHAM, TW1

....

PCM

## £2,175

### FEATURES

- Recently redecorated throughout with a brand-new, modern family bathroom
- Spacious ground floor garden flat with two generous double bedrooms
- Beautiful private garden with a cabin and side access
- Charming period features including high ceilings and sash windows



# 2 Bedroom Flat located in Twickenham

Call us on  
**020 8396 7171**  
**hello@newbrix.co.uk**

A beautifully redecorated two-bedroom garden flat, brimming with period charm, set within an elegant Victorian house on a sought-after road in St Margaret's.

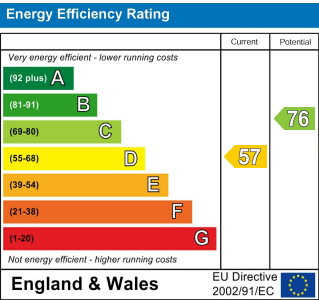
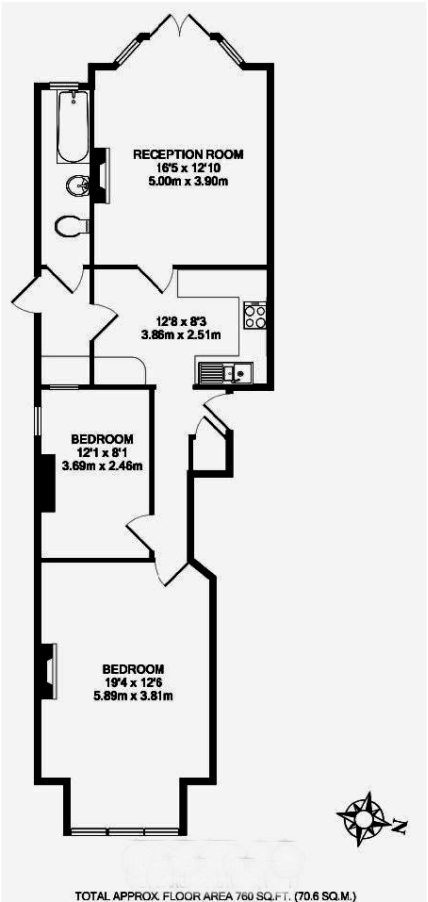
This stunning ground floor apartment has been recently redecorated and features a brand-new contemporary family bathroom. The property showcases an abundance of character, including high ceilings and original sash windows.

The spacious reception room opens through double doors onto a delightful, secluded private garden with a sunny aspect. Perfect for outdoor entertaining or quiet relaxation, the garden also benefits from a versatile cabin and convenient side access.

The modern kitchen is fully fitted, and both double bedrooms are generously proportioned, making this a perfect home for couples, young families, or those seeking stylish single-level living.

Ideally located just 400 metres from the River Thames and Richmond Lock, and 700 metres from St Margaret's mainline station and the charming village high street, offering a fantastic range of local shops, cafés, and amenities.

**Council Tax Band**  
**D**



Agents Note: Whilst every care has been taken to prepare these particulars, they are for guidance purposes only. All measurements are approximate and are for general guidance purposes only and whilst every care has been taken to ensure their accuracy, they should not be relied upon and potential buyers are advised to recheck the measurements.

