

Flat

# 11 RADCLIFFE SQUARE, LONDON, SW15 6BL

PCM

## £3,200

### FEATURES

- Close to Putney station
- Split level flat
- Central heating & double glazing
- 3 Spacious double rooms
- Spacious living room & dining area



# 3 Bedroom Flat located in London

Call us on

**020 8396 7171**

**hello@newbrix.co.uk**

Spacious three double bedroom split level apartment is available fully furnished. The property offers bright reception room with laminate flooring combining excellent entertaining dining space, separate fully fitted kitchen, bathroom with separate WC and an ensuite bathroom. The property benefits from double glazing, gas central heating and plenty of natural light.

Radcliffe Square provides easy access down to Putney Mainline Station and Putney High Street with its excellent shopping and restaurants and within easy walking distance to East Putney Underground Station (District Line). This property is ideal for professional sharers and a viewing is a must.

**Council Tax Band**

**E**

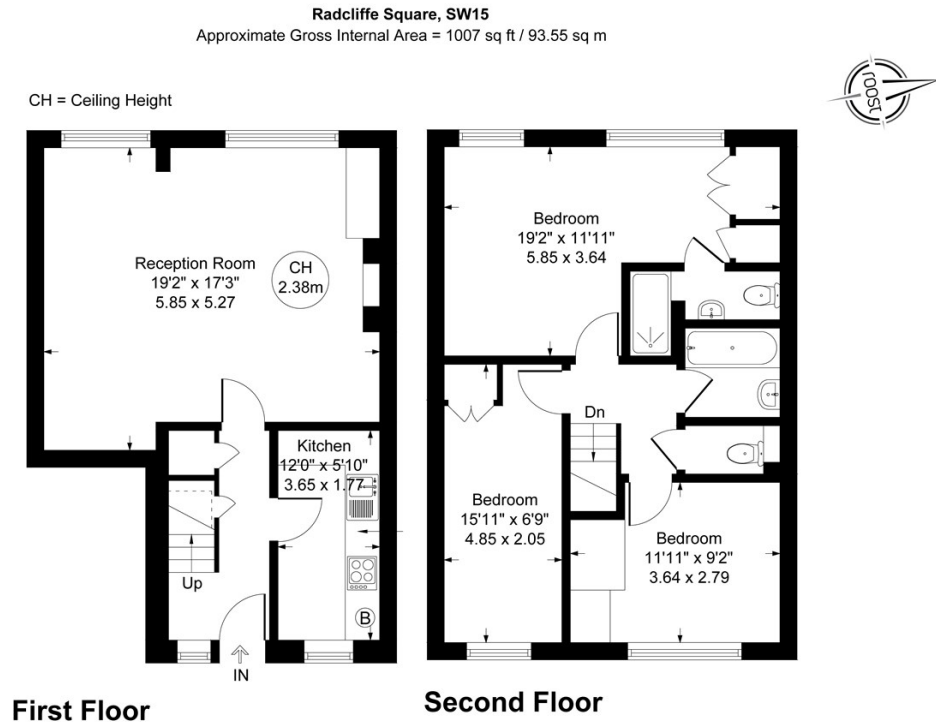


Illustration for identification purposes only, measurements are approximate, not to scale. (ID353)

Energy Efficiency Rating		Current	Potential
<i>Very energy efficient - lower running costs</i>			
(92 plus)	<b>A</b>		
(81-91)	<b>B</b>		
(69-80)	<b>C</b>		
(55-68)	<b>D</b>		
(39-54)	<b>E</b>		
(21-38)	<b>F</b>		
(1-20)	<b>G</b>		
<i>Not energy efficient - higher running costs</i>			
<b>England &amp; Wales</b>		EU Directive	
		2002/91/EC	

Agents Note: Whilst every care has been taken to prepare these particulars, they are for guidance purposes only. All measurements are approximate and are for general guidance purposes only and whilst every care has been taken to ensure their accuracy, they should not be relied upon and potential buyers are advised to recheck the measurements.

