

House - Detached

10 CHEYNE HILL, SURBITON, KT5 8BN

PCM
£3,390



FEATURES

- Close to surbiton mainline station
- Four Spacious Bedrooms in a detached house
- Additional summer house with power
- Private driveway for 2 cars
- Fully fitted kitchen with modern appliances



4 2 2 E



4 Bedroom House - Detached located in Surbiton

Call us on

020 8396 7171

hello@newbrix.co.uk

Available to let from 15 September 2024. Presented to the market this four bedroom detached family residence, located within walking distance of Surbiton train station and high street.

The property comprises two large bright reception rooms, a fitted kitchen finished to a high specification providing access to a mature rear garden.

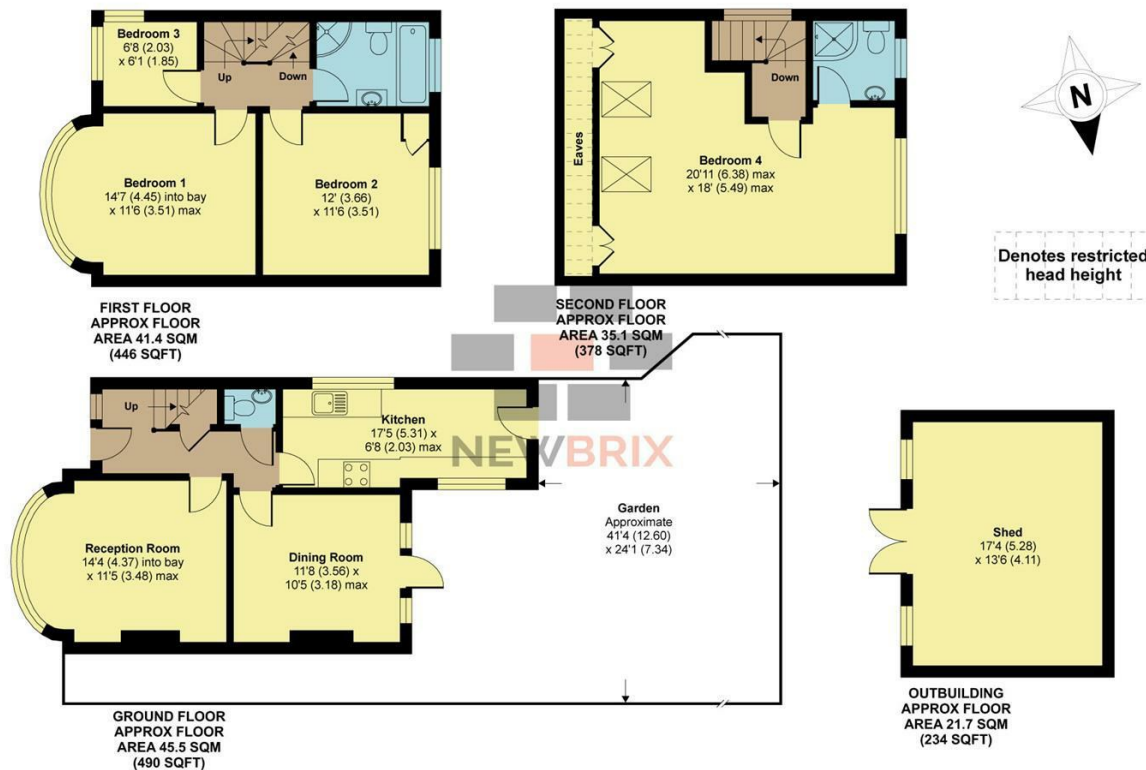
To the first floor are three bedrooms and a family bathroom. To the second floor a converted loft providing a beautiful dual aspect master bedroom benefiting from an en-suite shower room.

The property further benefits from off street parking for two cars to the front and to the rear a large summer house with power and lighting with a shed to the side.

Council Tax Band

F

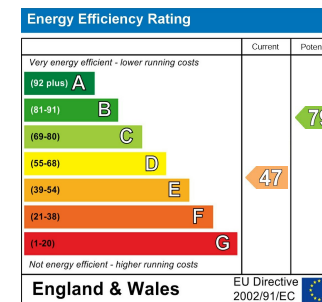
Cheyne Hill, Surbiton, KT5



APPROX. GROSS INTERNAL FLOOR AREA 1314 SQ FT 122 SQ METRES (EXCLUDES RESTRICTED HEAD HEIGHT & OUTBUILDING)

Whilst every attempt has been made to ensure the accuracy of the floor plan contained here, measurements of doors, windows and rooms are approximate and no responsibility is taken for any error, omission or misstatement. These plans are for representation purposes only as defined by RICS Code of Measuring Practice and should be used as such by any prospective purchaser. Specifically no guarantee is given on the total square footage of the property if quoted on this plan. Any figure given is for initial guidance only and should not be relied on as a basis of valuation.

Produced for www.newbrix.co.uk REF : 194152



Agents Note: Whilst every care has been taken to prepare these particulars, they are for guidance purposes only. All measurements are approximate and are for general guidance purposes only and whilst every care has been taken to ensure their accuracy, they should not be relied upon and potential buyers are advised to recheck the measurements.

