



Maisonette - Garden

2 DALE COURT DALE ROAD, PURLEY, CR8 2EE

Per Calendar Month

£1,600

FEATURES



2 Bedroom Maisonette - Garden located in Purley

Discover a delightful two-bedroom ground floor maisonette in the heart of Purley. Recently refurbished to impeccable standards, this spacious residence features two double bedrooms, a generous living area, ample kitchen, and bathroom. Step outside to your private garden oasis. Perfectly located near Purley town center and its mainline station, enjoy easy access to London, along with a vibrant array of bars, restaurants, and shops. Don't miss out, schedule your viewing today!

Call us on

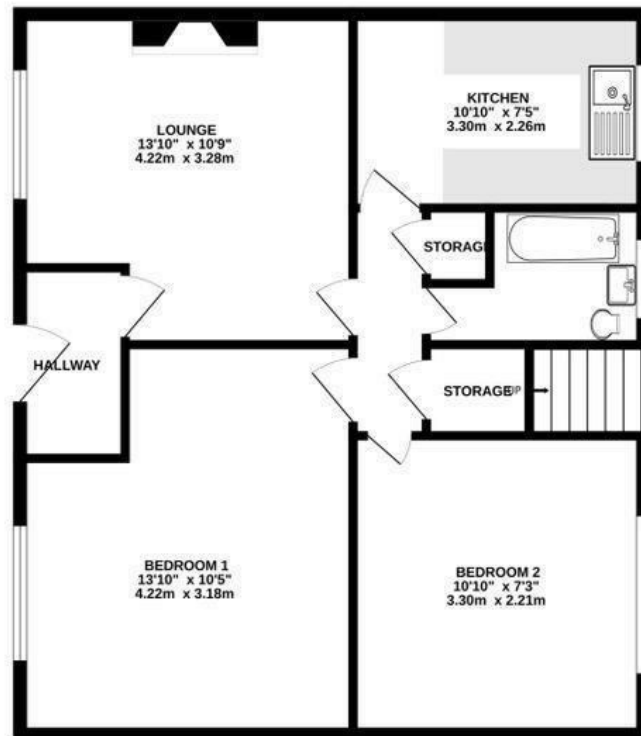
020 8396 7171

hello@newbrix.co.uk

Council Tax Band

C

GROUND FLOOR
646 sq.ft. (60.0 sq.m.) approx.



Energy Efficiency Rating		
	Current	Potential
<i>Very energy efficient - lower running costs</i>		
(92 plus) A		
(81-91) B		
(69-80) C		
(55-68) D		
(39-54) E		
(21-38) F		
(1-20) G		
<i>Not energy efficient - higher running costs</i>		
England & Wales	EU Directive 2002/91/EC	

Agents Note: Whilst every care has been taken to prepare these particulars, they are for guidance purposes only. All measurements are approximate and are for general guidance purposes only and whilst every care has been taken to ensure their accuracy, they should not be relied upon and potential buyers are advised to recheck the measurements.

