



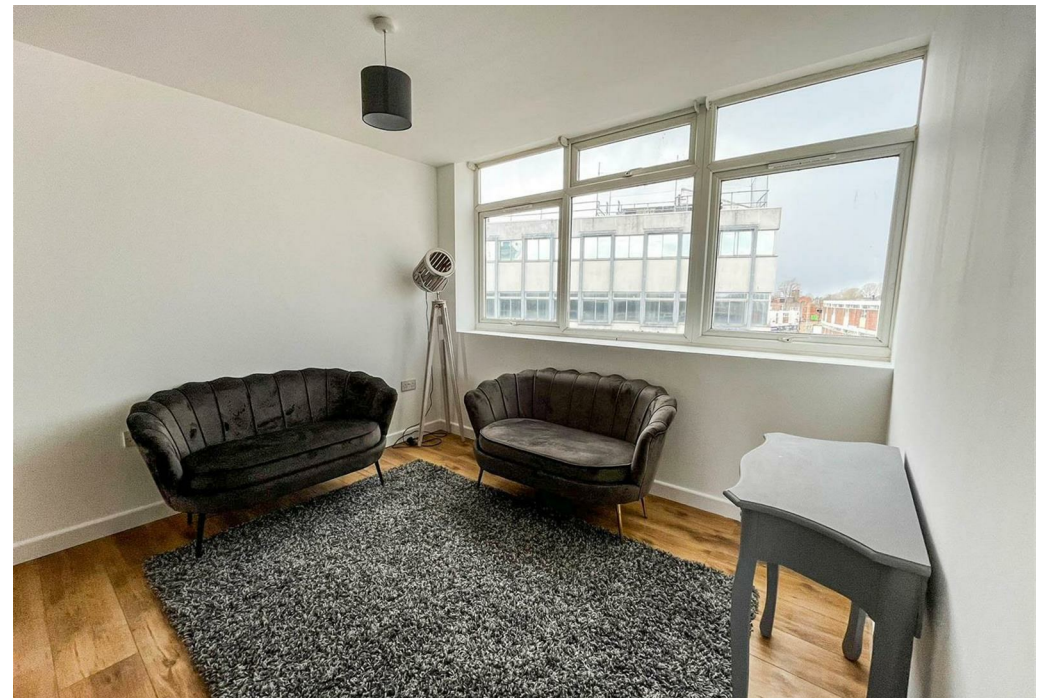
Newdegate Street, Nuneaton, CV11 4EJ

Property Description

This expansive two bedroom flat is situated in the heart of the town centre. It is within walkable distance to the train station and other means of transport. This top floor flat consists of a bathroom, a kitchen with a fitted cooker, a living room and two double bedrooms. A lift is available to the necessary floor as well as double glazing and electric storage heaters throughout.

EPC Rating D. Council Tax Band A







Key Features

- Flat
- Two Bedrooms
- Unfurnished Property
- Electric Heating
- EPC D
- No Garden
- Council Tax Band A

£750 PCM