



Woodfield Road, Hinckley, LE10 2NJ

Loveitts
PART OF | SHELDON BOSLEY KNIGHT

Property Description

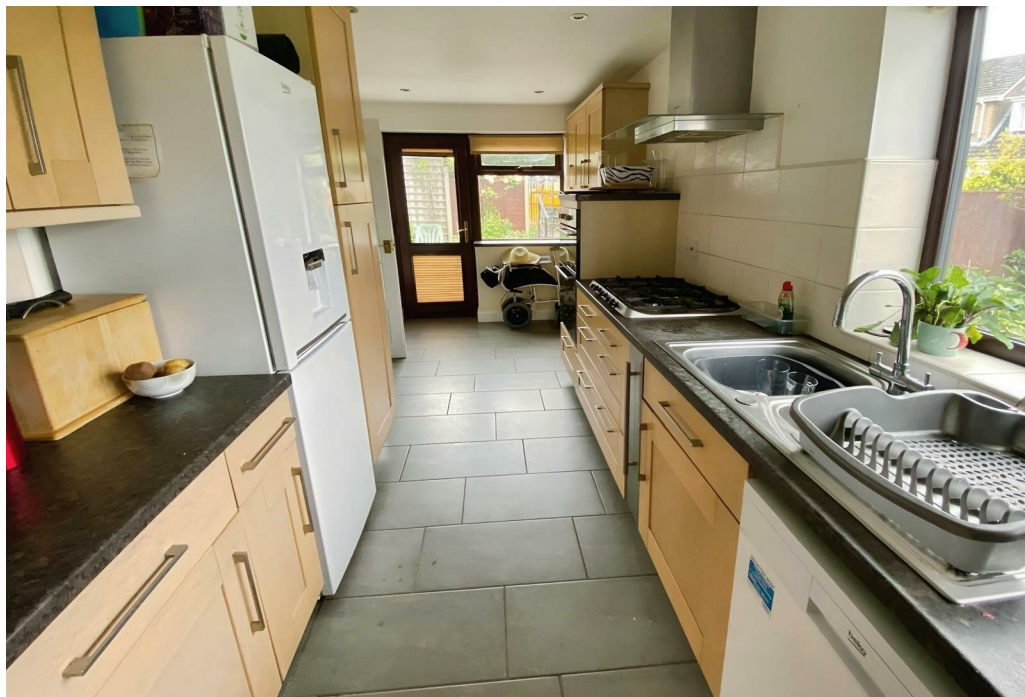
* Deposit Alternative Available *

Loveitts are pleased to offer this spacious semi detached bungalow, occupying a larger than average corner commanding position, with gardens to the front, side and rear. The property benefits from a garage with parking for two cars.

In brief the accommodation comprises entrance hall, spacious lounge diner, kitchen, two double bedrooms and a shower room.

Ideally located close to all local amenities, including local shops, schools for all ages and regular public transport services. The bungalow is accessible for commuting to all major road links, such as the A5, M69, M1 and M6.

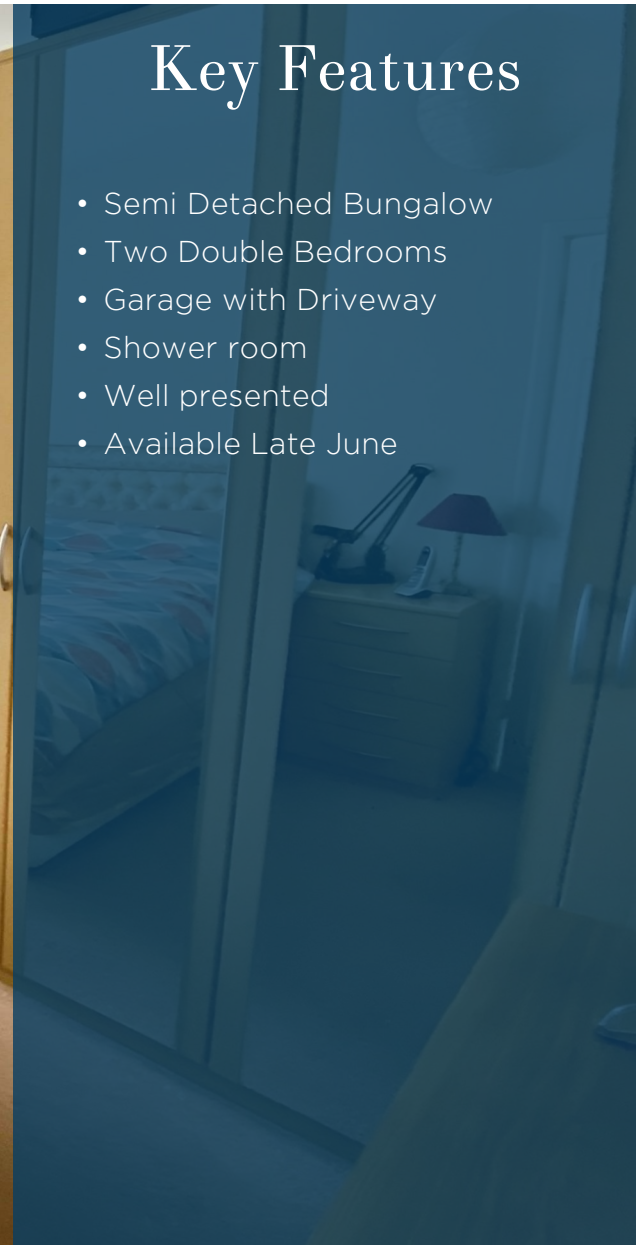






Key Features

- Semi Detached Bungalow
- Two Double Bedrooms
- Garage with Driveway
- Shower room
- Well presented
- Available Late June



£1,250 PCM